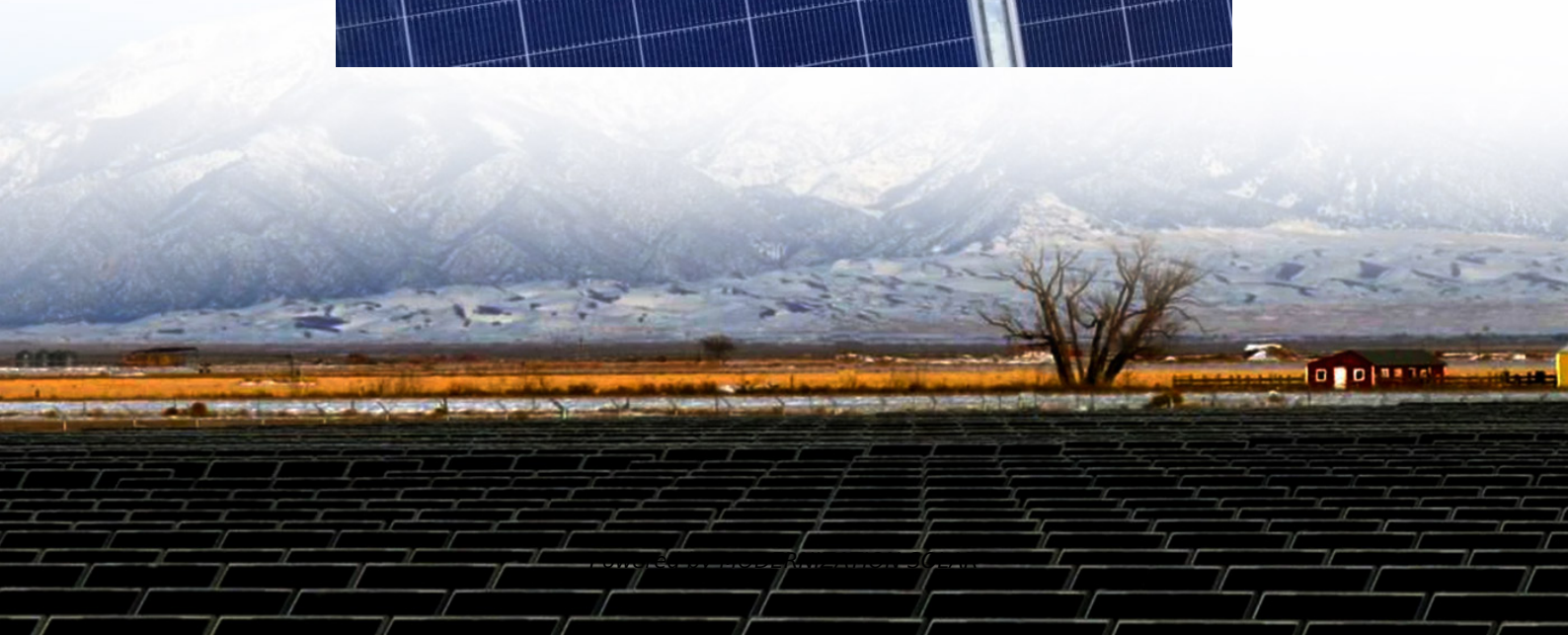


40-foot folding container for wastewater treatment plants





Overview

What is a containerized wastewater treatment plant?

A containerized wastewater treatment plant is a wastewater treatment system that is fully integrated into a container. For uncomplicated and fast transportation, we use 10, 20 and 40-foot shipping containers in accordance with the international ISO standard for our KLARO container systems.

How long does a containerized wastewater treatment plant take?

We offer a variety of capacities that can meet your requirements. As the pre-assembled containerized wastewater treatment plant is located inside a standard 20 or 40 foot shipping container, it can be relocated and installed with ease at other locations. In most cases it is a one to two-day operation and requires only a flatbed truck and a crane.

What size container sewage treatment plant do you use?

For uncomplicated and fast transportation, we use 10, 20 and 40-foot shipping containers in accordance with the international ISO standard for our KLARO container systems. Container sewage treatment plants are mainly used for short-term use in remote areas that are not connected to a sewage system, in camps and on construction sites.

How can a containerized water treatment system help a large-scale reverse osmosis plant?

Take the difficulty out of large-scale reverse osmosis plants with containerized water treatment systems. By choosing pre-designed, module-sized plants, fully assembled in standard 20-ft and 40-ft containers with the option for a 10-ft as well, the complexity and construction of building water purification systems are no longer necessary.



40-foot folding container for wastewater treatment plants

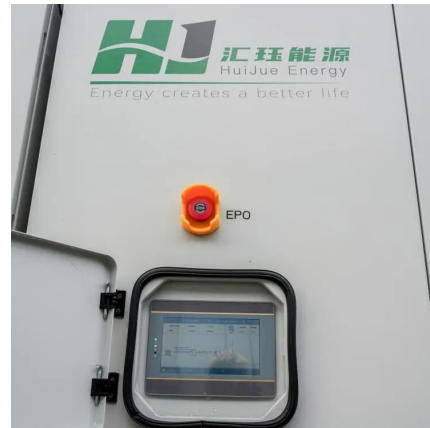


The mobile 20 ft (15m³) and 40 ft (30m³) wastewater ...

Aug 1, 2024 · Modular extension These mobile wastewater treatment plants feature a modular extension and set-up concept. This allows for maximum flexibility when it comes to designing ...

20 feet and 40 feet container Containerized wastewater treatment ...

The compact unit adopts the standard container as its main body, which is convenient for transportation. The treatment capacity of one unit is 50-200m³/day. We specially developed ...



Waterneer Biokube : Waste Water Management Solutions

Feb 22, 2025 · Handy containerized wastewater treatment plant As the pre-assembled containerized wastewater treatment plant is located inside a standard 20 or 40 foot shipping ...

Intelligent containerised waste water treatment plant

Dec 4, 2025 · TLS supplies intelligent mobile and containerised waste water treatment plant or sewage treatment plant container, which can be remotely controlled to monitor system ...



Container

We offer different container wastewater treatment plants to choose from. All of them are modular in design and can therefore also be expanded. Basically, 10-, 20- and 40-foot containers are ...



Container

We offer different container wastewater treatment plants to choose from. All of them are modular in design and can therefore also be expanded. ...



Containerized / Mobile Water Treatment

Take the difficulty out of large-scale reverse osmosis plants with containerized water treatment systems. By choosing pre-designed, ...





Containerized Portable Wastewater ...

Nov 17, 2018 · Description Containerized Waste Water Treatment Biocell Water containerised wastewater treatment plants offer a fast and effective ...

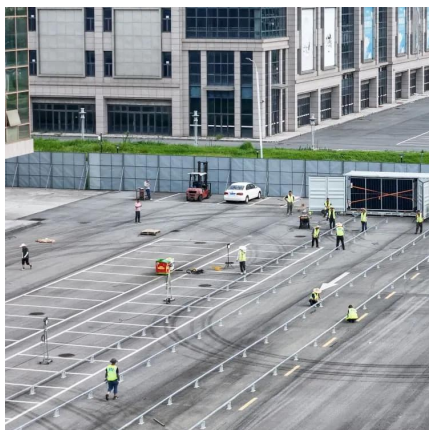


Intelligent containerised waste water ...

Dec 4, 2025 · TLS supplies intelligent mobile and containerised waste water treatment plant or sewage treatment plant container, which can be ...

Mobile wastewater treatment plants in containers

KLARO Container: Mobile wastewater treatment plants in 10-, 20- or 40-foot containers. Ready for immediate use, flexible and cleaning with proven SBR



Containerized wastewater treatment plant from BioKube

Handy containerized wastewater treatment plant
As the pre-assembled containerized wastewater treatment plant is located inside a standard 20 or 40 foot shipping container, it can be ...



[Containerized / Mobile Water Treatment Equipment](#)

Take the difficulty out of large-scale reverse osmosis plants with containerized water treatment systems. By choosing pre-designed, module-sized plants, fully assembled in standard 20-ft ...



[Waterneer Biokube : Waste Water ...](#)

Feb 22, 2025 · Handy containerized wastewater treatment plant As the pre-assembled containerized wastewater treatment plant is located inside a ...

[Containerized Portable Wastewater Treatment Plants](#)

Nov 17, 2018 · Description Containerized Waste Water Treatment Biocell Water containerised wastewater treatment plants offer a fast and effective above ground portable wastewater ...



[Shipping Container Sewage Water Treatment Plant for 40 Feet](#)

Dec 5, 2025 · Shipping Container Sewage Water Treatment Plant for 40 Feet, Find Details and Price about Sewage Treatment Waste Water Treatment from Shipping Container Sewage ...



Contact Us

For technical specifications, project proposals, or partnership inquiries, please visit:
<https://meble-decorator.pl>

Scan QR Code for More Information



<https://meble-decorator.pl>