

48v12ah can be connected to an inverter





Overview

Can a 12V inverter be connected to a 24v battery?

Let's say you have a 12V inverter and try to connect two 12V batteries in series. You would end up inputting 24V to the inverter and cause an overload. This could cause damage to your equipment, at the very least your inverter will shut down to protect itself.

How many batteries can I connect to my inverter?

There is no set limit to how many batteries you can connect to your inverter. But you must understand how you connect your batteries together affects what you can and can't do! For example, connecting your batteries in series will be different to connecting in parallel.

Can you connect two 12V 100Ah batteries together?

If you connect together two 12V 100Ah batteries you end up with a 24V 100Ah capacity battery bank. You must be very careful doing this as an inverter will have a specific input voltage such as 12V or 24V. Let's say you have a 12V inverter and try to connect two 12V batteries in series.

What voltage does a 12V inverter use?

So if you use 2, 5, or 10, 12V batteries the voltage would remain at 12V. This is important as your inverter will be designed for a specific input voltage – usually 12V or 24V. For example, if you connect together two 12V 100Ah batteries the voltage remains at 12V but you now have 200Ah of battery capacity.



48v12ah can be connected to an inverter

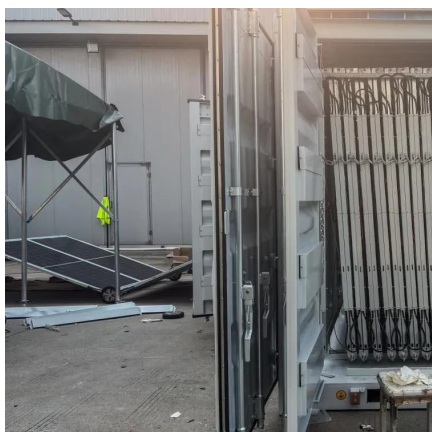


[Adding a 48v inverter to an existing 12v system](#)

Oct 28, 2024 · To change from one inverter output to the other you would need an AC transfer switch. To get one leg of 120V out of a split phase inverter you could use a autotransformer. ...

[48v12ah can be connected to an inverter](#)

How many batteries can a 36V inverter charge?
If there are three 12V 200ah batteries, the battery voltage is 36V ($12V \times 3 = 36$). An inverter with a 36V can recharge these batteries. The ...



[Can I Use a 48V Battery on a 12V Inverter? How Can!](#)

Oct 16, 2022 · Using a 48V battery on a 12V inverter can pose potential risks like overloading the inverter and damaging the connected appliances. It's important to ensure compatibility and ...

[Connecting Multiple Batteries to an Inverter: ...](#)

How Many Batteries Can Be Connected to an Inverter? There is no set limit to how many batteries you can connect to your inverter. But you must ...



[48V Inverter: The Ultimate Guide to Efficient and Scalable ...](#)

May 19, 2025 · Unlock efficient power solutions with a 48V inverter--perfect for solar, off-grid, and backup systems. Learn how to choose the best one for your needs now!



[Can I just hook a 48V battery to a IQ7 inverter. I have a ...](#)

Can I just hook a 48V battery to a IQ7 inverter. I have a relatively large (Agnostic) LIFEOP4 used battery (with a BMS) that I want to charge with a wind mill and use a IQ7 (or IQ8) inverter to ...



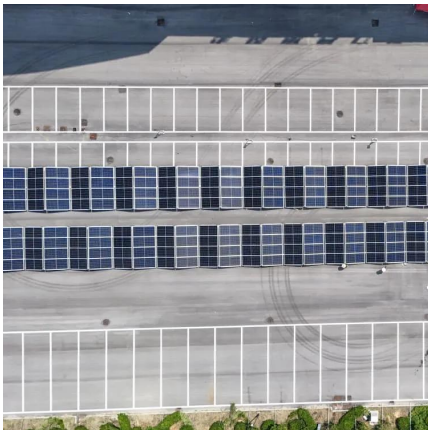
[Can You Use a 12V Battery with a 48V Inverter?](#)

Dec 11, 2023 · Using a 12V battery with a 48V inverter is not advisable as it can lead to equipment damage and safety hazards. Connecting a lower voltage battery to a higher voltage inverter ...



[Connecting Multiple Batteries to an Inverter: Easy Guide](#)

How Many Batteries Can Be Connected to an Inverter? There is no set limit to how many batteries you can connect to your inverter. But you must understand how you connect your batteries ...



[How to Safely Connect a Battery to an Inverter: A Step-by ...](#)

Apr 13, 2025 · Learn how to safely connect your batteries to your inverter with our guide. Avoid common wiring mistakes to optimize performance and extend system life.

[How to Safely Connect a Battery to an ...](#)

Apr 13, 2025 · Learn how to safely connect your batteries to your inverter with our guide. Avoid common wiring mistakes to optimize performance ...



[How Many Batteries Can Be Connected to a ...](#)

Nov 29, 2023 · How many batteries can be connected to the inverter? The number of batteries you can connect to an inverter cannot exceed 12 ...



[How to Choose the Best Inverter Hybrid 12 kW 48 V for Your ...](#)

4 days ago · Discover what to look for in an inverter hybrid 12 kW 48 V system--efficiency, compatibility, and key specs that ensure reliable off-grid or backup power performance.



[How Many Batteries Can Be Connected to a 12V Inverter?](#)

Nov 29, 2023 · How many batteries can be connected to the inverter? The number of batteries you can connect to an inverter cannot exceed 12 times the charging current of the inverter. For ...

Contact Us

For technical specifications, project proposals, or partnership inquiries, please visit:
<https://meble-decorator.pl>

Scan QR Code for More Information



<https://meble-decorator.pl>