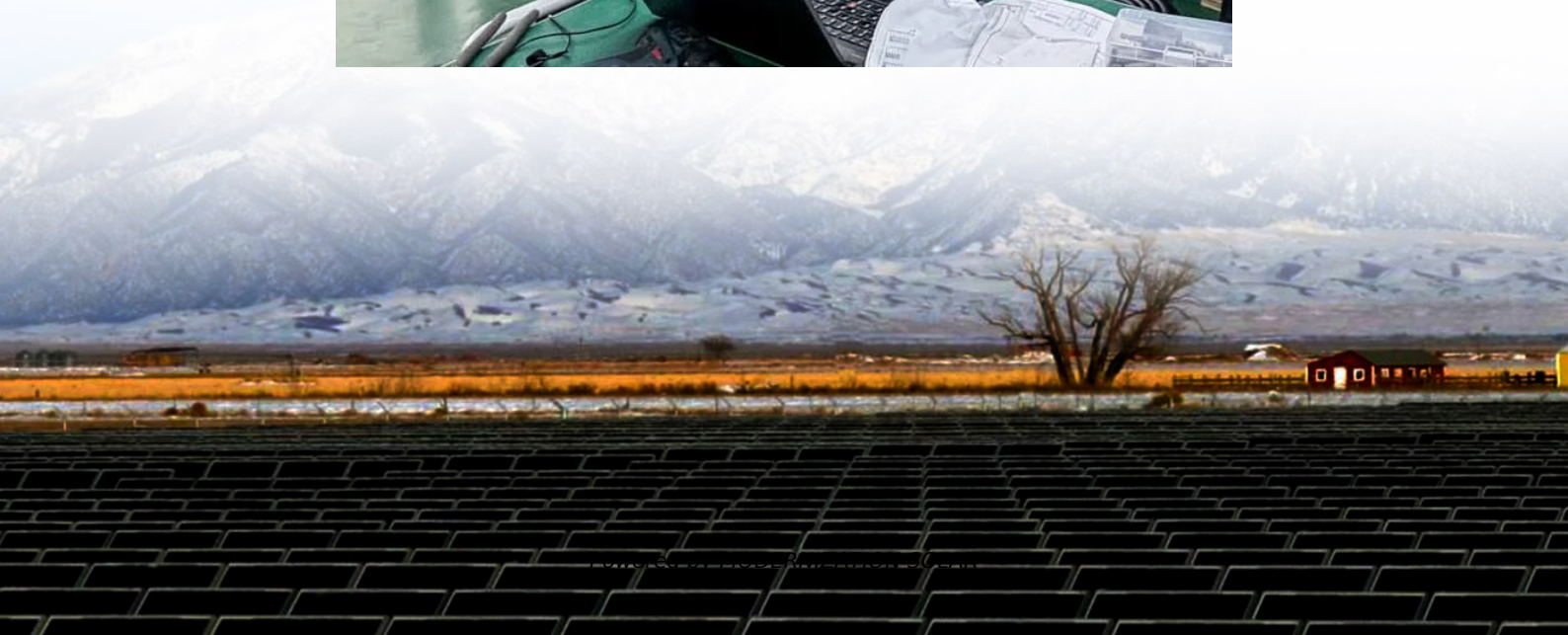


# **ApiA solar container lithium battery pack parallel voltage**





## Overview

---

Should you connect lithium solar batteries in series or parallel?

In a parallel connection, the capacity increases while maintaining the same voltage, ideal for longer run times. When setting up lithium solar batteries, understanding how to connect them in series or parallel is crucial for maximizing efficiency and performance. Below, we delve into the specifics of each configuration.

Why do lithium ion batteries need to be connected in series?

To meet the power and energy requirements of the specific applications, lithium-ion battery cells often need to be connected in series to boost voltage and in parallel to add capacity . However, as cell performance varies from one to another [2, 3], imbalances occur in both series and parallel connections.

How to optimize lithium batteries in parallel connection?

Without proper monitoring, excessive current flow between batteries can result in overheating. To enhance safety, it is essential to incorporate fuses, circuit breakers, and a high-quality BMS to monitor voltage levels and prevent short circuits. How to Optimize Lithium Batteries in Parallel Connection 1. Use Identical Batteries.

How many lithium ion battery cells need to be connected in series?

The details are as follows. The voltage of a single lithium-ion battery cell is low. If 3.2 V LFP cells are adopted, 160 cells need to be connected in series to provide the battery voltage of 512 V DC. The charge and discharge currents (I) of the cells connected in series are the same.



## ApiA solar container lithium battery pack parallel voltage

---



### [How to Balance Lithium Batteries with Parallel BMS?](#)

Sep 1, 2023 · A parallel BMS regulates the current flow between 2 or multiple batteries connected in parallel, learn how it works and how to connect it.

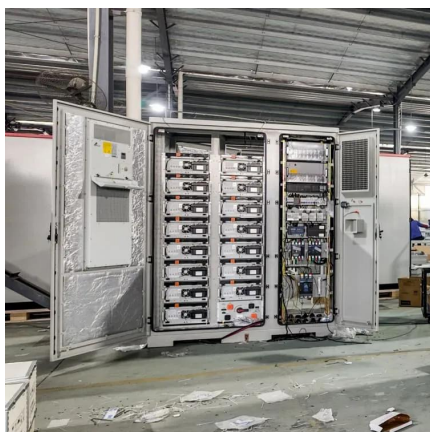
### [Paralleling Lithium Batteries in Solar Systems: Principles, ...](#)

Sep 15, 2025 · This is also the core difference between parallel and series connection of lithium batteries in solar systems: series connection increases voltage (for example, two 12V battery ...



### [Can I parallel multiple Lithium Battery Packs?](#)

May 27, 2025 · A lithium battery pack consists of multiple individual lithium cells connected in series and/or parallel to achieve the desired voltage and capacity. When cells are connected in ...



### [Can I parallel multiple Lithium Battery Packs?](#)

May 27, 2025 · A lithium battery pack consists of multiple individual lithium cells connected in series and/or parallel to achieve the desired voltage ...



### [White Paper on Active Current Balancing and Intelligent ...](#)

Dec 10, 2024 · Although lithium-ion batteries have many advantages, challenges exist in actual application. This paper analyzes and describes voltage balancing management of lithium-ion ...



### [Run two \(almost\) same battery packs in parallel](#)

Feb 21, 2025 · When using standard BMS, parallel connection of lithium batteries is not acceptable due to very likely damage to the BMS electronics (which may result in damage to ...



### **Understanding the Performance of Lithium Batteries in Parallel ...**

Mar 12, 2025 · Lithium battery parallel gets much more power consumption compared to series with the same voltage level. It is because of power dissipation from the resistors.





## [Understanding the Performance of Lithium ...](#)

Mar 12, 2025 · Lithium battery parallel gets much more power consumption compared to series with the same voltage level. It is because of power ...



## [Apia container photovoltaic energy storage lithium battery](#)

hate (LFP) battery pack for use with an external inverter. A Battery-Box Premium LVS contains between 1 to 6 battery modules L power generation system and home energy management ...



## [How to Connect Lithium Solar Batteries in Series & Parallel](#)

May 5, 2024 · Connecting lithium solar batteries in series or parallel is essential for customizing energy storage systems. In a series connection, the voltage increases while the capacity ...



## [How to Balance Lithium Batteries with Parallel ...](#)

Sep 1, 2023 · A parallel BMS regulates the current flow between 2 or multiple batteries connected in parallel, learn how it works and how to connect it.





## [Design of controlled charging strategy for parallel ...](#)

Nov 2, 2022 · However, the parallel modular connection presents problems as it is susceptible to differences within the modules. Furthermore, the ar-rangement of lithium-ion battery packs in ...



## **Management of imbalances in parallel-connected lithium-ion battery packs**

Aug 1, 2019 · Uneven electrical current distribution in a parallel-connected lithium-ion battery pack can result in different degradation rates and overcurrent issues in the cells. Understanding the ...



## [How to Connect Lithium Solar Batteries in ...](#)

May 5, 2024 · Connecting lithium solar batteries in series or parallel is essential for customizing energy storage systems. In a series connection, ...



## **Contact Us**

For technical specifications, project proposals, or partnership inquiries, please visit:  
<https://meble-decorator.pl>



## Scan QR Code for More Information



<https://meble-decorator.pl>