

Base station communication equipment distance





Overview

How to choose a base station?

Common frequencies include 900 MHz, 1.8GHz, 2.1GHz, 2.4 GHz, 2.6GHz, 5 GHz and 6 GHz, etc. 3. Power: The base station should have enough power to provide a strong and reliable signal. Higher power can help overcome obstacles and interference. 4. Antenna: The base station should have a high-quality antenna that is suitable for the intended use.

How many transceivers does a base station have?

It consists of three part elements: one or more transceivers, several antenna mounted on a tower or building, power system, and air conditioning equipment. A base station can have between 1 and 16 transceivers, depending on geography and the demand for service of an area.

How does a base station antenna work?

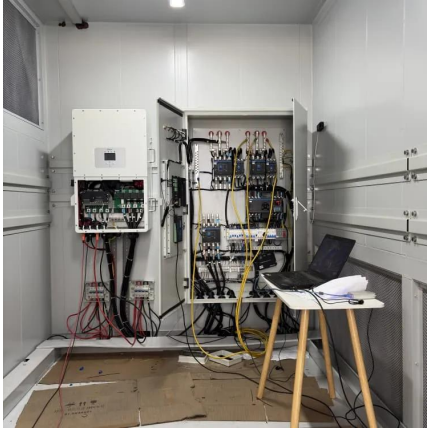
Base station antennas direct the radio signals away from the building or mast to obtain coverage in a certain area. The intensity of the radio waves is drastically reduced as the distance increases from the base station antenna.

Are base station antennas omnidirectional or directional?

Base station antennas are available in different shapes and sizes and can be either omnidirectional antennas or directional antennas. The operating frequency, coverage area, range, and other performance parameters can vary depending on the base station antenna that is chosen for a specific network.



Base station communication equipment distance

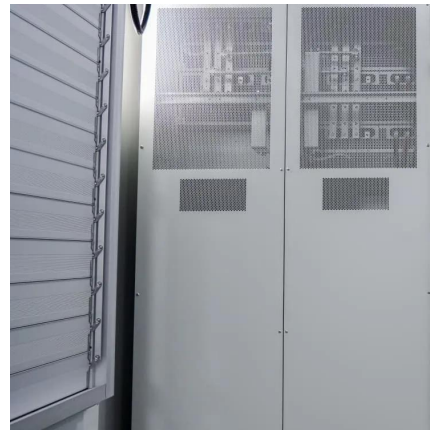


ICNIRP , Base Stations

Over large distances, the signals must be relayed by a communication network comprising base stations and often supported by a wired network. The power of a base station varies (typically ...

What Is A Base Station?

Apr 22, 2024 · A base station is a piece of equipment that facilitates wireless communication between devices and a network. It contains the necessary hardware and software to transmit ...

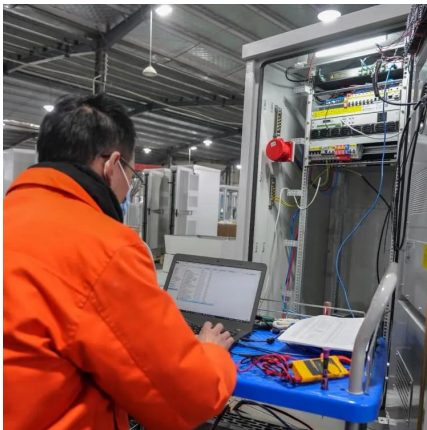
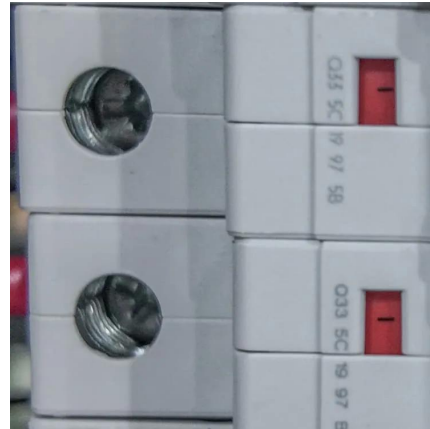


[What Are Base Station Antennas? Complete Guide](#)

Nov 20, 2024 · This article will provide a thorough outlook on base station antennas from working principles, applications, installation and maintenance details and everything in between.

[Evaluated minimum safe distances for mobile ...](#)

Aug 5, 2024 · In this study, electromagnetic power density of 31 different base stations was measured at 900 MHz frequency at 20, 40 and 60 ...



[How Is the Transmission Distance of Communication ...](#)

Jul 16, 2025 · This article explains the transmission distance calculation formula for communication antennas, the key influencing parameters, and practical correction methods, ...

[Mobile Base Station Roles and Radiation vs Distance](#)

Oct 2, 2025 · Overview of base station components and functions, and how proximity affects radio field strength and radiation; covers antennas, transceivers, controllers, and power control.



What Is A Base Station?

Apr 22, 2024 · A base station is a piece of equipment that facilitates wireless communication between devices and a network. It contains the necessary ...



What are Base Station in Telecommunications?

Nov 21, 2025 · Base stations contain several key parts. The antenna sends and receives radio energy. The transceiver handles signal modulation. The baseband processor converts signals ...



Base stations and networks

5 days ago · Base station antennas direct the radio signals away from the building or mast to obtain coverage in a certain area. The intensity of the radio waves is drastically reduced as the ...

Base stations and networks

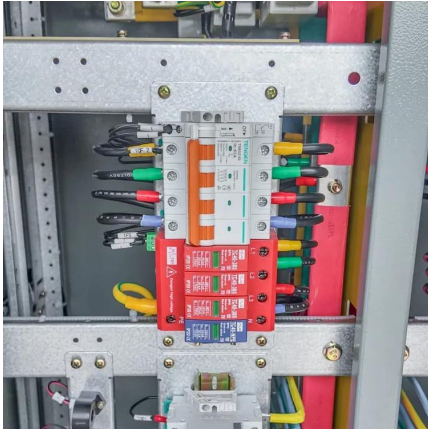
Base Stations Enable Mobile Communications
Antennas Are Placed in Various Locations
More Mobile Devices Means More Base Stations
Base Station Output Power Is Low
Exposure Limits Are Set by Independent Organizations
Exposure Levels Are Much Lower Than The Limits
Public Access Is Restricted Where Needed
No Adverse Health Effects According to The Who
Each base station can only serve a limited number of mobile devices at a time. As the number of mobile devices in a community grows, more base stations are needed. For that reason, more antennas are needed in such crowded locations as shopping malls where there are many mobile phone users. However, the shorter the distance between base station ante
See more on ericsson Missing: distance
Must include: distance
Tesswave



What Are Base Station Antennas? Complete ...



Nov 20, 2024 · This article will provide a thorough outlook on base station antennas from working principles, applications, installation and ...

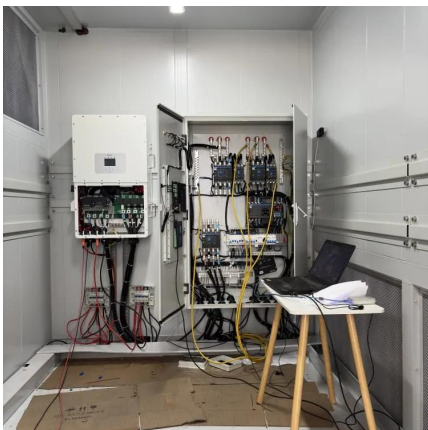


Evaluated minimum safe distances for mobile-communication base stations

Aug 5, 2024 · In this study, electromagnetic power density of 31 different base stations was measured at 900 MHz frequency at 20, 40 and 60 meters distances from base stations. Since ...

Base Stations

Jul 23, 2025 · The present-day tele-space is incomplete without the base stations as these constitute an important part of the modern-day scheme of wireless communications. They are ...



Base Station Antenna

The levels of public exposure to electromagnetic energy from any base station vary depending on antenna type, location and distance from the base station. The base station antennas are most ...

Contact Us

For technical specifications, project proposals, or partnership inquiries, please visit: <https://meble-decorator.pl>



Scan QR Code for More Information



<https://meble-decorator.pl>