

Base station communication recovery time





Overview

Do communication base stations perform post-earthquake functionality using Bayesian network?

A method to evaluate the post-earthquake functionality of communication base stations using Bayesian network is developed. The dependence between the equipment and its hosting building structure, and the impact of power outages are considered. The method is validated using seismic damage data from the Ludian Earthquake.

What is an indoor base station?

An indoor base station comprises a communication room accommodating various communication equipment and a communication tower responsible for transmitting and receiving information. The communication room is equipped with wireless communication devices, transmission equipment, power supply equipment, air conditioning, and cable routing racks.

What type of damage does a communication base station suffer?

Based on field investigations after the Yangbi earthquake, this paper categorizes typical seismic damage of communication base stations as follows: Communication infrastructure damage is particularly severe, with building collapse leading to equipment destruction.

Why do base stations need a transformation process?

Therefore, this transformation process provides a more accurate assessment of the post-earthquake functional status of base stations and serves as an important basis for subsequent operation and maintenance decisions. 3.2.1. Construction of Fault Tree Model



Base station communication recovery time



[Research on power-communication coordination recovery ...](#)

Feb 1, 2021 · Firstly, according to the corresponding relationship between mobile base stations and power nodes, multi-level grids of distribution networks are divided, and power ...

Post-earthquake functional state assessment of communication base

Dec 1, 2024 · There is a lack of models that can fully evaluate the post-earthquake functional states of base stations with the consideration of the dependencies between different ...



[An Independent UAV-Based Mobile Base Station](#)

Feb 22, 2025 · In disaster scenarios, e.g., earthquakes, tsunamis, and wildfires, communication infrastructure often becomes severely damaged. To rapidly restore damaged communication ...

Optimal Dense Base Station Deployment for Resilient Communication

Sep 1, 2025 · The effects of physical damage, power disruption, and recovery dynamics on the outage probability over time are incorporated



into a dual-objective optimization model. A key ...



[Communication Base Station Disaster Recovery , Huijue ...](#)

When Nature Strikes: Can Our Networks Survive?
As typhoons batter coastal cities and wildfires engulf telecom infrastructure, one urgent question emerges: How can communication base ...



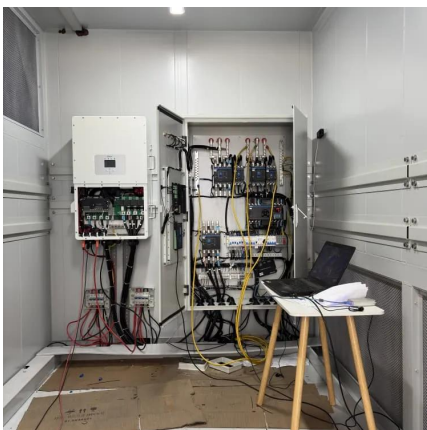
[Distribution network restoration supply method considers 5G base](#)

Feb 15, 2024 · This paper proposes a distribution network fault emergency power supply recovery strategy based on 5G base station energy storage. This strategy introduces Theil's entropy ...



[Communication Base Station Serviceability , Huijue Group E ...](#)

The \$23 Billion Question: Why Do 38% of Network Outages Persist? When a typhoon disrupts communication base station serviceability in Southeast Asia, or a snowstorm cripples 5G ...





Reliability prediction and evaluation of communication ...

Dec 4, 2023 · In order to grasp the operation condition of post-earthquake communication base stations, Liu et al.¹ from China Earthquake Administration conducted a study and analysis of ...

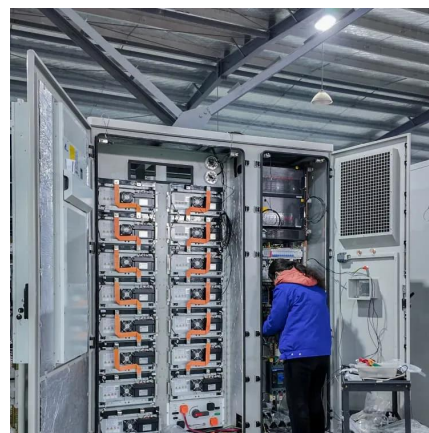


Optimizing redeployment of communication base ...

Mar 17, 2025 · Signal coverage quality and strength distribution in complex environments pose severe challenges, leading to the inadequacy of traditional two-dimensional base station ...

An Independent UAV-Based Mobile Base ...

Feb 22, 2025 · In disaster scenarios, e.g., earthquakes, tsunamis, and wildfires, communication infrastructure often becomes severely damaged. ...



Reliability prediction and evaluation of communication base stations ...

Jun 2, 2023 · To provide communication services to post-earthquake disaster areas, Peer et al.⁷ proposed a new multi-hop device-to-device (D2D) communication framework that connects ...



Contact Us

For technical specifications, project proposals, or partnership inquiries, please visit:
<https://meble-decorator.pl>

Scan QR Code for More Information



<https://meble-decorator.pl>