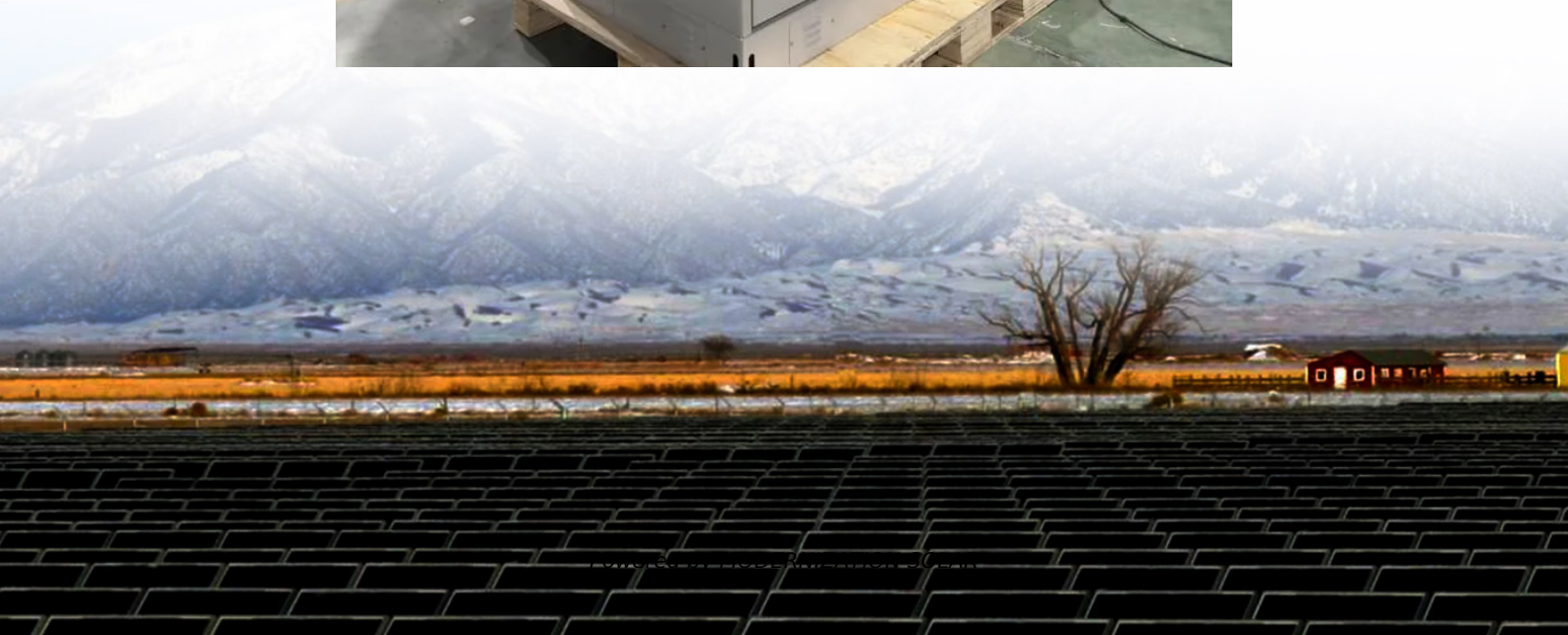


# **Base station power supply and BBU**





## Overview

---

What is a baseband unit (BBU)?

The baseband unit (BBU) is a crucial component in mobile base stations, handling tasks like signal processing, resource allocation, and protocol management to ensure efficient communication between mobile devices and networks. It also ensures security through encryption and manages interference and network operations.

What is a battery backup unit (BBU) & a power supply unit (PSU)?

The pressure to meet this demand is most apparent in the design of Battery Backup Units (BBUs) and Power Supply Units (PSUs), where connectors must support high currents, dense packaging, hot-swap functionality, and low resistance, all while maintaining mechanical robustness and signal integrity.

What is a BBU & how does it work?

BBUs are stacked up to provide backup power to the UPS. These are monitored by the Power Monitoring Interface (PMI), which is connected to a power shelf comprising Power Supply Units (PSUs).

What is a PSU plus BBU?

Unlike conventional UPS systems, a PSU plus BBU features a compact design, reduced energy loss, and quicker switchover times. The enerXBar series combines a switched-mode power supply with a built-in BBU, eliminating the need for external UPS systems and enhancing energy efficiency.



## Base station power supply and BBU

---

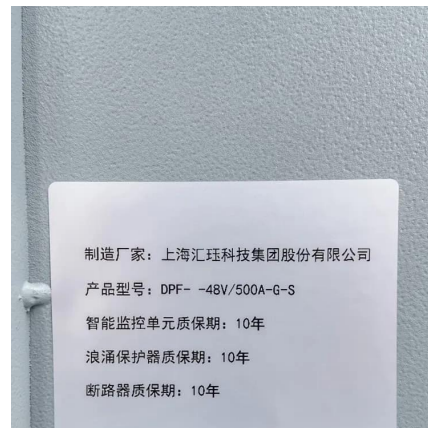


### [Robust BBU and PSU Interconnects for OCP ...](#)

Apr 12, 2023 · Amphenol's advanced power interconnect solutions address the critical challenges of BBU and PSU design in OCP-based data ...

### [Battery Backup Unit \(BBU\) Solutions for ICT ...](#)

The enerXBar series combines a switched-mode power supply with a built-in BBU, eliminating the need for external UPS systems and enhancing ...



### [Battery Backup Unit \(BBU\) Solutions for ICT Power Protection ...](#)

The enerXBar series combines a switched-mode power supply with a built-in BBU, eliminating the need for external UPS systems and enhancing energy efficiency. IT managers around the ...



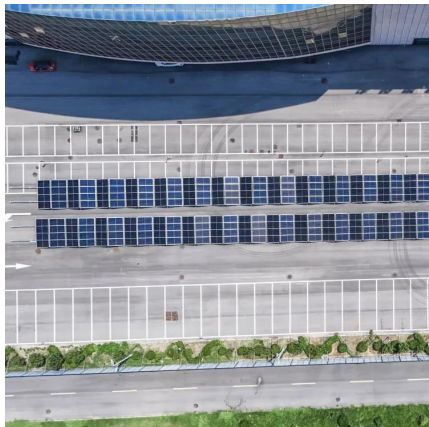
### [An Introduction to 5G and How MPS Products Can ...](#)

Feb 11, 2025 · The base station is a critical component for 5G operation. The base station is comprised of two main components: the active antenna unit (AAU) and the baseband unit ...



### The Road to Robust 5G: A Deep Dive into Base Station Power Supply

Leveraging our market-proven product performance and system adaptability, we have built a product line that covers all power supply scenarios for base stations, providing solid support ...



### 5G communication challenge to switching power supply-VAPEL

For the popular networking mode of 5G base station: 3 sectorAAU + 1 BBU, assuming that the AAU efficiency is 20%, the output power of the switching power supply supplying power to 5G ...



### **Baseband Unit (BBU)**

The baseband unit (BBU) is a crucial component in mobile base stations, handling tasks like signal processing, resource allocation, and protocol management to ensure efficient ...







## (5G) Communication Power Supply Solution

In addition, for 3-sector base stations equipped with excess channel boards and excess baseband processing equipment, baseband pool sharing technology can be used to set the excess ...



### **Baseband Unit (BBU)**

The baseband unit (BBU) is a crucial component in mobile base stations, handling tasks like signal processing, resource allocation, and protocol ...

## Robust BBU and PSU Interconnects for OCP-Based Data ...

Apr 12, 2023 · Amphenol's advanced power interconnect solutions address the critical challenges of BBU and PSU design in OCP-based data centers. Explore the interconnects that deliver ...



## Baseband Unit (BBU): Core Processing Unit of Base Stations

It also includes enhancing the overall efficiency of the power supply unit's power conversion system within the BBU. Moreover, Vertical energy saving technology can also examine the ...



## Surge Protection for AC Power in Baseband Units

Bourns® PowerPlay Solution™ BBU's are predominantly powered by AC power rather than DC power. Aside from lightning strikes, AC power lines can experience large voltage swells from ...



## Optimal Backup Power Allocation for 5G Base Stations

May 17, 2022 · us on the backup power allocation of 5G networks in this work. Moreover, if the network adopts a C-RAN architecture where many BBUs are centralized, considering that the ...

## Contact Us

For technical specifications, project proposals, or partnership inquiries, please visit: <https://meble-decorator.pl>

**Scan QR Code for More Information**



<https://meble-decorator.pl>