

Base station power supply considerations





Overview

How much power does a PSU need?

This is when the PSU is no longer powering the PA, which is the main power draw, but still needs to power other electronics. The current target for low-load efficiency is about 30 W. Some OEMs would like to see that drop to nearly 10 W.

How much power does a PSU need during a quiescent period?

During quiescent periods—typically 5 ms to 100 ms—the PSU must minimize all load power with the basic functions of the antenna unit remaining active. It also must be able to ramp up to full power whenever the antenna wants to check for any active users within its range.

How does a 5G base station reduce OPEX?

This technique reduces opex by putting a base station into a “sleep mode,” with only the essentials remaining powered on. Pulse power leverages 5G base stations’ ability to analyze traffic loads. In 4G, radios are always on, even when traffic levels don’t warrant it, such as transmitting reference signals to detect users in the middle of the night.

How efficient is a 230 volt PSU?

onents should be employed to minimize board height. And of course, the PSUs need to be very efficient, with ratings of at least 96% power conversion efficiency for 230-V ac inputs and 95%



Base station power supply considerations

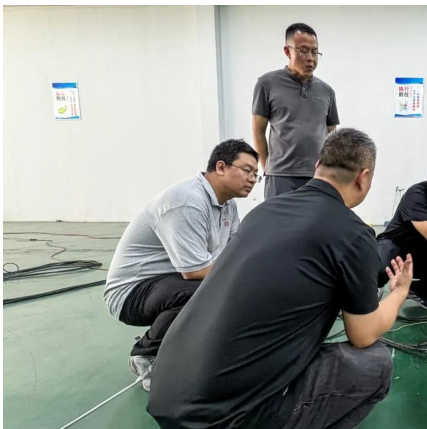


[Power Supply for Base Station Market](#)

What are the primary demand drivers influencing the adoption of power supply solutions in the base station market? The global deployment of 5G networks remains the most significant ...

[Selecting the Right Supplies for Powering 5G Base ...](#)

Jul 2, 2022 · These tools simplify the task of selecting the right power management solutions for these devices and, thereby, provide an optimal power solution for 5G base stations components.



Heavy Copper PCBs in Base Stations: Design and Manufacturing Considerations

Jul 18, 2025 · Applications of Heavy Copper PCBs in Base Stations In base stations, heavy copper PCBs are primarily used in power supply units, RF amplifiers, and backup battery ...

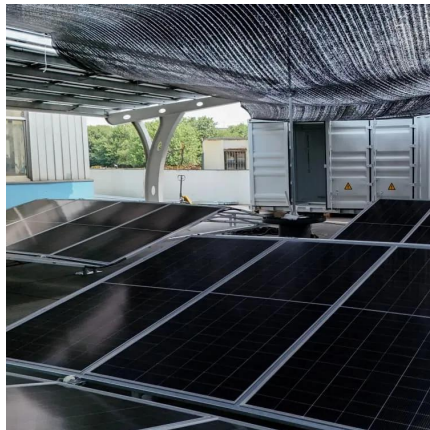
[The power supply design considerations for ...](#)

Jul 1, 2021 · An integrated architecture reduces power consumption, which MTN Consulting estimates currently is about 5% to 6 % of opex. This ...



[The power supply design considerations for 5G base stations](#)

Jul 1, 2021 · An integrated architecture reduces power consumption, which MTN Consulting estimates currently is about 5% to 6 % of opex. This percentage will increase significantly with ...



[Building Better Power Supplies For 5G Base Stations](#)

Jun 13, 2022 · Building Better Power Supplies For 5G Base Stations by Alessandro Pevere, and Francesco Di Domenico, Infineon Technologies, Villach, Austria according to Ofcom, the UK's ...



[A Green Base Station Dual Power Supply Strategy](#)

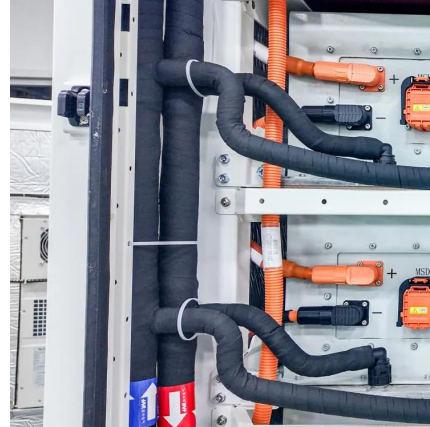
Apr 24, 2024 · To address the issue of how to maximize renewable power utilization, a dual power supply strategy for green base station is proposed in this article. The strategy consists of Grid ...





[5G macro base station power supply design strategy and ...](#)

Oct 24, 2024 · For macro base stations, Cheng Wentao of Infineon gave some suggestions on the optimization of primary and secondary power supplies. "In terms of primary power supply, we ...



[Building better power supplies for 5G base stations](#)

May 25, 2025 · Building better power supplies for 5G base stations Authored by: Alessandro Pevere, and Francesco Di Domenico, both at Infineon Technologies

[5G infrastructure power supply design considerations \(Part II\)](#)

May 19, 2021 · Small form factor power supplies, for instance, are ideal for MNOs looking for power supply solutions in space-constrained environments, such as server and base station ...



[Power Supply for Base Station Decade Long Trends, Analysis ...](#)

Mar 25, 2025 · The global Power Supply for Base Station market is booming, projected to reach \$10.2 billion by 2025, driven by 5G deployment and technological advancements. Explore ...



Heavy Copper PCBs in Base Stations: Design ...

Jul 18, 2025 · Applications of Heavy Copper PCBs in Base Stations In base stations, heavy copper PCBs are primarily used in power supply units, RF ...



Contact Us

For technical specifications, project proposals, or partnership inquiries, please visit:
<https://meble-decorator.pl>

Scan QR Code for More Information



<https://meble-decorator.pl>