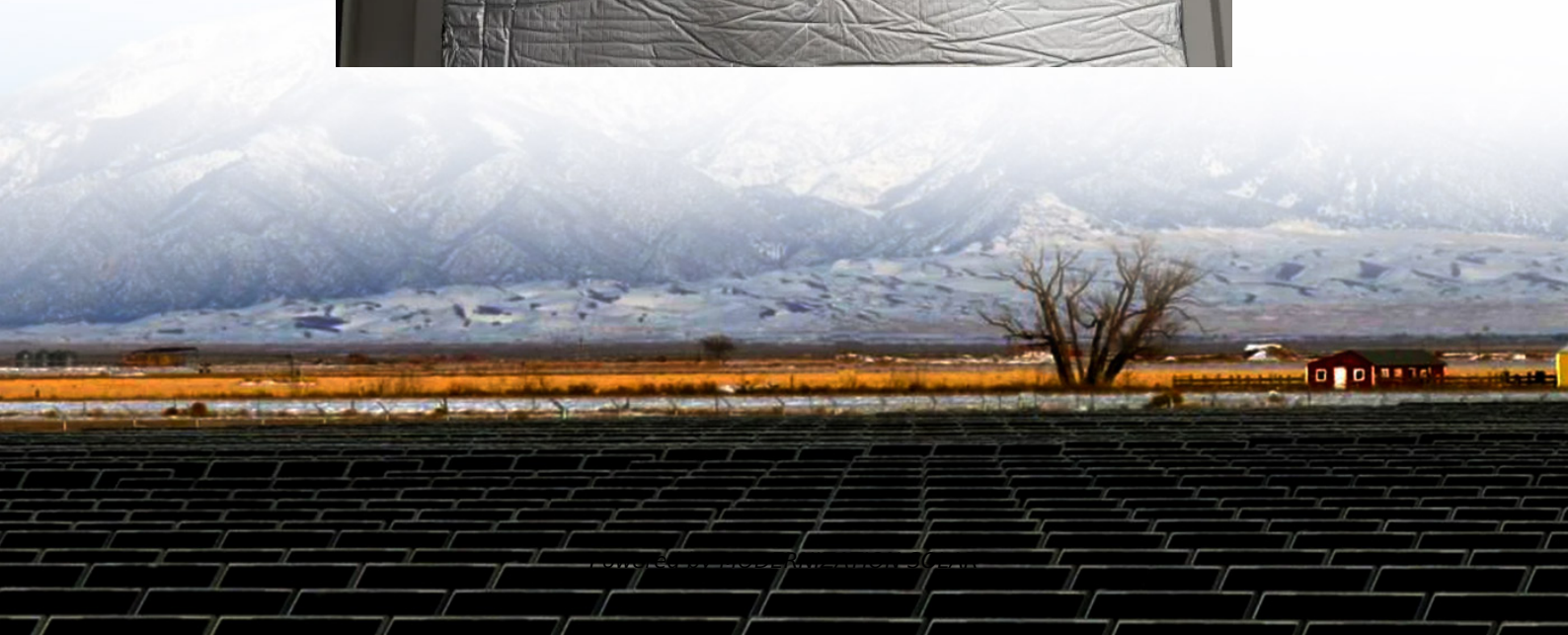


Base station prompts how to turn off the power





Overview

How to control the power of SteamVR base stations?

[English | 中文] A tool to manage the power of SteamVR base stations. You can control the power of the base stations without HTC Vive or Valve Index by linking it to the start and end of SteamVR. SteamVR has a feature to automatically turn on the base stations when SteamVR starts and sleep them when SteamVR ends.

Can a basestation be plugged in without power management?

Next go to SteamVR -> Settings -> Basestation and click Power Management to access the correct interface page. Yes - since the basestations are mechanical devices, if you leave them plugged in without power management enabled and they stay fully powered on and spinning - that uptime will count against the unit's lifespan.

What if I have problems with my power management settings?

If you're having problems with your Power Management settings, please click Contact Steam Support to get help. If you are using VR in a shared tracking space with multiple instances of SteamVR running, turn off Base Station Power Management to avoid power state conflicts. Base Station compatibility?

.

Why is my base station not working?

Check the LED in the top center of the Base Station's front (convex) surface: This indicates that the Base Station is not stable or is encountering vibrations. This will prevent the laser from functioning. Make sure your Base Station is in a stable location and is not being subject to vibration or shaking.



Base station prompts how to turn off the power



[leaving tracking on 24-hr around the clock ...](#)

May 10, 2020 · SteamVR -> Devices -> Base Station Settings -> Power Management. Set this to "sleep" to completely turn off the motors when ...

[How To Reset Wyze Base Station \(Do It Now\)](#)

2 days ago · Once the LED light becomes steady and stops blinking, the Wyze base station is successfully reset. After the reset, you may need to ...



[How to Power Off Basestations remotely \[SOLVED\]](#)

Feb 19, 2019 · Main issue is that it needs the base station serial number to actually change the power state and i've not found a way to programmatically find it over Bluetooth (likely a ...

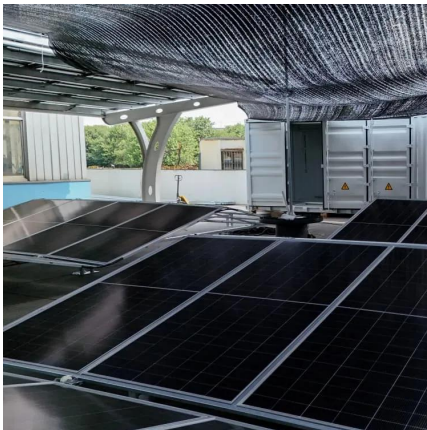
[How To Power Cycle Vive Base Station?](#)

Jan 24, 2024 · Should I turn off Vive base stations? Basestations are high-speed mechanical devices and will wear out with usage. There is something called basestation power ...



Bad to leave base stations on?

Sep 10, 2017 · A new section will appear below, affecting base station power options. Check the box labeled Put Base Station in Standby mode when VR is not in use. This will automatically ...



Base stations power off when computer goes ...

Jun 16, 2021 · Is there a way to turn off the base stations when my computer goes into hibernation mode? Or when I close the lid of my laptop? It ...



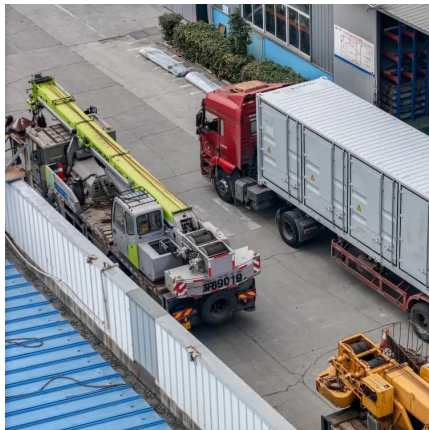
Lighthouse Power Management

Nov 23, 2025 · Lighthouse Power Management #
Turning your Base Stations on and off can be a little annoying, as you may have to plug and unplug them. So here's a few ways you can make ...



[How to Turn Off Owlet Base Station Light , 5 ...](#)

Sep 24, 2023 · Conclusion In conclusion, turning off the Owlet Base Station light is easy, requiring only a few simple steps. It's important to remember ...



SDW 5000 Series

Feb 15, 2019 · After a DIP switch is changed: Re-boot the system by disconnecting the power supply and UsB cable shortly from the power. to configure the system via HeadsetupTM Pro: ...

[How to Power Off Basestations remotely \[SOLVED\]](#)

EDIT (18/04/2020) To spare you the scroll marathon in this thread, here the list of the currently known solutions to power off your basestations remotely: LH v1: GitHub - ...



[How do you turn off the 2.5 ghz base? No power bu](#)

How do you turn off the 2.5 ghz base? No power button and I set the auto shutoff to one m - Learn about SteelSeries - Arctis Nova Pro Wireless Multi Gaming Headset for PC, PS5, PS4, ...



[RING BASE STATION USER MANUAL Pdf](#)

...

View and Download ring Base Station user manual online. Kit Security Basics. Base Station security system pdf manual download. Also for:

...



[Switching the Base Station on and into standby](#)

Sep 19, 2025 · The Base Station cannot be switched off. You have to disconnect it from the power supply, see Connecting/disconnecting the Base Station to/from the power supply system .



[How to Turn Off Simplisafe Base Station Light ...](#)

Nov 17, 2024 · However, many users seek guidance on how to turn off SimpliSafe base station light to reduce light pollution in their living spaces ...



[How to Power Off Basestations remotely \[SOLVED\]](#)

Jan 12, 2021 · EDIT (18/04/2020) To spare you the scroll marathon in this thread, here the list of the currently known solutions to power off your basestations remotely: LH v1: GitHub - ...



[How to deactivate or disable the Anaconda ...](#)

Apr 10, 2024 · If you run the command, the next time you open your terminal, it will automatically activate the Anaconda base environment. Note that ...



[Index Base Station & Lighthouse Tracking](#)

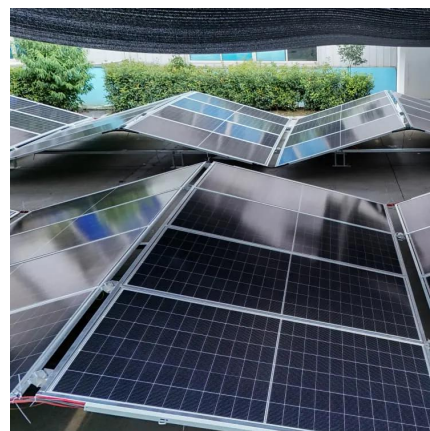
General TroubleshootingChannel ConflictsPower Management Issues When this feature is OFF, your Base Stations will remain powered and emitting whenever they are plugged in. When this feature is ON, your Base Stations will go into standby when SteamVR is not in use and wake up when SteamVR starts. See more on [help.steampowered.com](#) Github

Automated power management for SteamVR ...

Jul 12, 2025 · A tool to manage the power of SteamVR base stations. You can control the power of the base stations without HTC Vive or Valve ...

[Do base stations switch off automatically?](#)

Nov 29, 2019 · Seems like a simple question. If I switch off my computer and the vive headset but forget to switch off the base stations - what happens? Do the base stations stay active ...



[Index Base Station & Lighthouse](#)



Tracking

If you are using VR in a shared tracking space with multiple instances of SteamVR running, turn off Base Station Power Management to avoid power state conflicts.

Base stations power off when computer goes into hibernation

Jun 16, 2021 · Is there a way to turn off the base stations when my computer goes into hibernation mode? Or when I close the lid of my laptop? It works fine when I exit SteamVR, but sometimes ...



Automated power management for SteamVR ...

Jul 12, 2025 · A tool to manage the power of SteamVR base stations. You can control the power of the base stations without HTC Vive or Valve ...

Automated power management for SteamVR base station

Jul 12, 2025 · A tool to manage the power of SteamVR base stations. You can control the power of the base stations without HTC Vive or Valve Index by linking it to the start and end of ...





Contact Us

For technical specifications, project proposals, or partnership inquiries, please visit:
<https://meble-decorator.pl>

Scan QR Code for More Information



<https://meble-decorator.pl>