

Base station unit power supply abnormality





Overview

Why do mobile network operators face frequent power supply failures at BTS sites?

Mobile network operators (MNOs) face frequent power supply failures at BTS sites, leading to revenue loss and increased operational expenditure (OPEX). Despite their critical role, BTSs face significant operational challenges due to vulnerabilities in their power supply. These disruptions can arise from various external and internal sources .

Do power failures affect BTS sites?

In today's dynamic world, BTS sites function as the backbone of mobile networks that provide communication services for millions of users. However, in practice, power failures can disrupt the critical operation of BTS sites which impact network reliability and user experience.

Why do cellular networks need a base transceiver station?

The widespread deployment of cellular networks has improved communication access, driving economic growth and enhancing social connections across diverse regions. Base Transceiver Stations (BTSs), are foundational to mobile networks but are vulnerable to power failures, disrupting service delivery and causing user inconvenience.

How can predictive analytics improve BTS power supply reliability?

Leveraging redundant BTS power supply with predictive analytics allows network operators to anticipate outages, crucial for maintaining service reliability and minimizing disruptions while optimizing maintenance schedules.



Base station unit power supply abnormality



Recurrent Neural Network-based Base Transceiver Station Power Supply

Jul 24, 2020 · In mobile telecom networks, Base Transceiver Station (BTS) is a key infrastructure that connects customers with the mobile network. BTSs are geographically scattered across ...

[Recurrent Neural Network-based Base Transceiver ...](#)

Jul 14, 2020 · Having a regulated and uninterrupted power supply depends on the quality of AC power from electric utility grid, availability of power backup options, environmental conditions, ...



[Machine learning for base transceiver stations power failure ...](#)

Dec 1, 2024 · The BTS infrastructure encompasses critical communication equipment, including transmission units that ensure signal propagation, baseband processing units for signal ...



[Prediction of Base Transceiver Station Power Supply System ...](#)

The uninterrupted operation of wireless communication services relies heavily on the stability of power supply systems for Base Transceiver Stations (BTS). This study is



dedicated to ...



Management and maintenance of base station switching power supply

Dec 11, 2024 · This article focuses on the three parts of switching power supply: "types and usage scenarios, configuration principles and algorithms, and daily management and maintenance".



Management and maintenance of base

...

Dec 11, 2024 · This article focuses on the three parts of switching power supply: "types and usage scenarios, configuration principles and ...



Predictive maintenance of base transceiver station ...

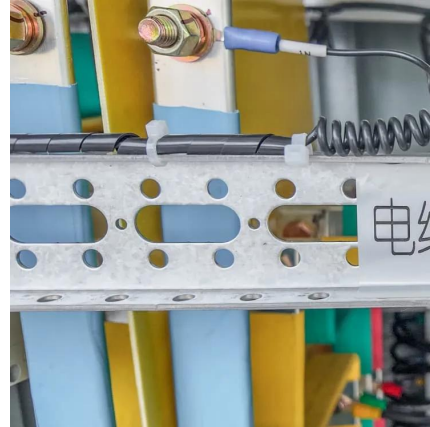
Nov 1, 2023 · The XGBoost algorithm was employed to develop a predictive model for the maintenance of Base Transceiver Station power failure. By using Machine Learning ...





[ADDIS ABABA UNIVERSITY ADDIS ABABA INSTITUTE OF ...](#)

Aug 17, 2024 · Abstract The uninterrupted operation of wireless communication services relies heavily on the stability of power supply systems for Base Transceiver Stations (BTS). This ...

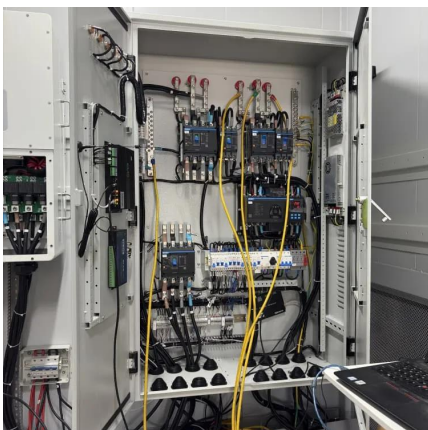


Hardware alarms reduction in Radio Base Stations by forecasting Power

Dec 1, 2022 · Power Supply Units (PSUs) are the components that supply Radio Base Stations (RBSs) with electric power, making it an essential unit for mobile communication networks. A ...

[Addressing DC Power Test Challenges for Base Station](#)

How to address DC power test challenges during development and production test of base station subassemblies using DC power analyzers and modular power system.



[Estimate health condition of power supply at base-station ...](#)

Nov 20, 2017 · Switching power supply is the most important energy device at base-station site. Its reliable operation has a direct impact on safe running of mobile telecom network. Through ...



Contact Us

For technical specifications, project proposals, or partnership inquiries, please visit:
<https://meble-decorator.pl>

Scan QR Code for More Information



<https://meble-decorator.pl>