

Can 12V5A use a 500W inverter





Overview

Step 1: Multiply battery Ah by its voltage. Deep cycle batteries, designed to provide a sustained amount of power over an extended period, come in various capacities, typically.

How long does a 12V battery last with a 500W inverter?

Here's a chart illustrating the estimated backup time for various 12V battery sizes when using a 500W inverter. 12v battery will last anywhere between 40 minutes to 7 hours running a 500-watt inverter. The exact time will depend on the size and type of yours.

How many appliances can a 5000W inverter power?

A 5000W inverter can power more than 5 household appliances without an additional power supply. However, some appliances may require more power, so you may need to disconnect some appliances while using others and then connect the required equipment to start.

How long does a 12V battery run on a 3000W inverter?

So, battery running time for a 12V battery with a 3000W inverter (94% efficiency) is 0.3008 hours. Battery Running Time = $100\text{Ah} \times 12\text{v} \times 80\% \times 95\% / 5000\text{W} = 0.1824$ hours. With a 5000W inverter (95% efficiency), a 12V battery will run for 0.1824 hours. Battery running time for a 12V battery with a 5000W inverter (95% efficiency) is 0.1824 hours.

How to calculate battery life of a 12V inverter?

Divide the available battery capacity for Inverter by the overall power consumed by the inverter to get an estimate of the 12v battery life. Battery Running Time = $\text{Battery Capacity} \times 12\text{v} \times \text{DOD}\% \times \text{Inverter Efficiency} / \text{Inverter Rated Power}$



Can 12V5A use a 500W inverter



[How long will a 12v battery last with inverter](#)

Apr 30, 2025 · How long will a 12v battery last with an inverter? Here is a completed explication on the factors that affect the run time of 12v battery ...

[How Long Will a 12V Battery Last When Using an Inverter](#)

Mar 13, 2025 · When connected to a 500W inverter (92% efficiency), a 12V battery will run for 1.7664 hours. These are the methods for calculating battery life.



[How long will a 12v battery last with inverter](#)

Apr 30, 2025 · How long will a 12v battery last with an inverter? Here is a completed explication on the factors that affect the run time of 12v battery and the calculation formula.



[What can a 500 watt inverter run?](#)

What Will a 500 Watt Inverter Run? Wondering what appliances you can power with a 500 watt inverter? It's a good question and important to understand before you purchase your inverter. ...



[What can I run on a 500 watt inverter?](#)

May 19, 2023 · A 500 watt inverter is a popular choice for powering electronic devices and appliances in areas without access to a traditional power grid. But what exactly can be run on ...

[How to Accurately Calculate the Current Draw for a 500W Inverter](#)

Aug 12, 2024 · To calculate current draw for a 500W inverter on a 12V system, use the formula: Current (A) = Power (W) / Voltage (V). Thus, Current = 500W / 12V = approximately 41.67A ...



[How Long Will a 12v Battery Last With 500w Inverter?](#)

Jun 8, 2023 · How long a 12v battery last with 500W inverter. In short, 12v battery will last between 40 minutes to 7 hours running a 500-watt inverter.



What Battery for a 500-Watt Inverter

Sep 16, 2025 · The capacity of the battery will determine how much power your inverter can supply and how long it can power an appliance. In this article, we look at what you can run off ...

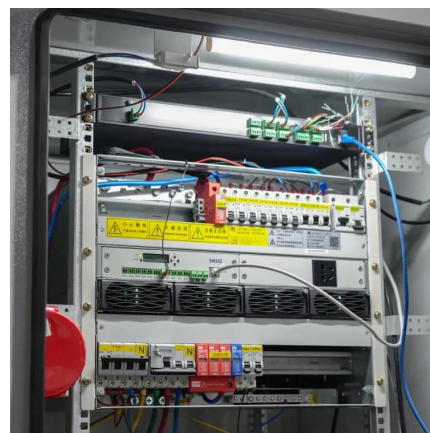


What Can I Power With A 500 Watt Inverter

What can a 500 watt power inverter run? A 500 watt inverter has enough power to run a laptop, a small fridge, power tools, cellphones, tablets, Television, game console, and DVD players. ...

Running 500w 230v fan on a 12v inverter

Oct 10, 2024 · Hi is it OK to run a 500w 230v mains fan heater Using a mains 12v cigarette socket 120w 230v power adapter plugged into a 12v 1500w 230v inverter. also would it cost less to ...



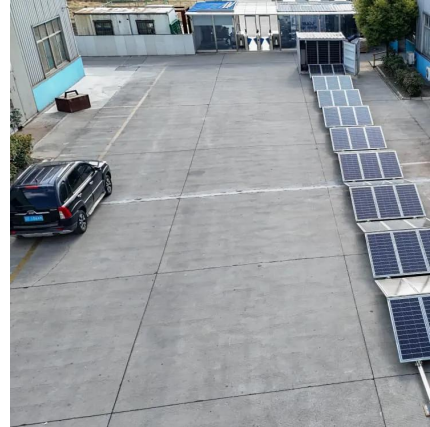
What can I run on a 500 watt inverter?

May 19, 2023 · A 500 watt inverter is a popular choice for powering electronic devices and appliances in areas without access to a traditional power ...



How Long Can a 500W Inverter Power Your Devices?

A 500W inverter's runtime spans 2-10+ hours based on system design. Optimize through battery bank sizing (minimum 200Ah for overnight use), load prioritization, and temperature-controlled ...



Contact Us

For technical specifications, project proposals, or partnership inquiries, please visit:
<https://meble-decorator.pl>

Scan QR Code for More Information



<https://meble-decorator.pl>