

Can a 36v 12 volt inverter be used





Overview

What is a 36V to 12V inverter?

All our 36V to 12V inverters meet high quality standards and have high efficiency. They also feature overload and temperature protection and offer a stabilised output voltage.

What is a 36V to 12V DC/DC converter?

A 36V to 12V DC/DC converter, also known as an inverter, converts the input DC voltage to a 36V stabilised DC voltage. DWE supplies DC/DC converters with various input voltages over a wide range and different output voltages. All our 36V to 12V inverters meet high quality standards and have high efficiency.

How much battery does a 12 volt inverter need?

As a rule of thumb, the minimum required battery capacity for a 12-volt system is around 20 % of the inverter capacity. For 24-volt inverters, it is 10 %. The battery capacity for a 12-volt Mass Sine 12/1200, for instance, is 240 Ah, while a 24-volt Mass Sine 24/1500 inverter would require at least 150 Ah.

How much battery does a 24 volt inverter use?

For 24-volt inverters, it is 10 %. The battery capacity for a 12-volt Mass Sine 12/1200, for instance, is 240 Ah, while a 24-volt Mass Sine 24/1500 inverter would require at least 150 Ah. The indicated battery capacity is only for the inverter. The capacity required for other loads should be added to it. How much power does an inverter consume?



Can a 36v 12 volt inverter be used



[Wiring Six 12V Batteries to Build a 36V Power System](#)

May 30, 2025 · Why Choose a 36V Power System
A 36V power system offers an ideal middle ground between lower-voltage setups like 12V or 24V and higher-voltage systems such as ...

[Wiring Six 12V Batteries to Build a 36V Power ...](#)

May 30, 2025 · Why Choose a 36V Power System
A 36V power system offers an ideal middle ground between lower-voltage setups like 12V or ...



[32V, 36V to 12V DC/DC voltage converter 400 ...](#)

Apr 14, 2022 · 400 Watt 36 volt to 12 volt DC-DC converter suitable for telecommunications, forklifts.



[Using 36 v solar panel with 12 v battery](#)

Nov 16, 2019 · You could then wire one 36V panel parallel to the string of two 18voltage panels because they are both putting out the same voltage. How many ...



[Difference Between 12v and 24v and 36V Solar Panels](#)

Mar 19, 2024 · Always use 72-cell solar panels with an MPPT-type solar charge controller or solar inverter, as using them with a PWM-type controller or inverter might not provide optimal ...



[Using 36 v solar panel with 12 v battery](#)

Nov 16, 2019 · You could then wire one 36V panel parallel to the string of two 18voltage because they are both putting out the same voltage. How many watts is that 36V panel? Let's say for ...



[Can You Use 3 12V Batteries In a 36V Golf ...](#)

Apr 2, 2024 · This step ensures your 36V golf cart batteries align with system requirements, minimizing risks and maximizing reliability for worry-free ...





36v INVERTER ON A 12v SYSTEM

Feb 9, 2025 · Hey there. I have a 1958 vintage Streamline trailer that I want to "solarize". I accidentally purchased a 36v to 110v inverter rather than a 12v to 110v inverter. Can I still use ...



The Best 36 Volt Power Inverters , SolarKnowHow

Best 36 Volt Inverter - Modified and Pure Sine , SolarKnowHow by SolarKnowHow Looking for a 36 V inverter is often harder than finding a 12 V or 24V inverter since they are less common. ...

The Best 36 Volt Power Inverters , SolarKnowHow

Types of Inverters Two Types of Pure Sine Wave Inverters Wzelb Pure Sine 3000W/6000 Watt Peak 36VAims Modified 5000W 36V Inverter XYZ Invt Pure Sine 3000W 36V Inverter Summary WZELB makes a very good 36-volt inverter. It comes with cables, a replacement fuse, and numerous safety features, such as overload, overvoltage, short circuit shutdowns, etc. This inverter is flexible and easy to use. It has 2xAC outlets, a digital display, and a terminal block for hard wiring. See more on solarknowhow Occupation: Self-Employed-Former Operations Executive Born: Jan 19, 1968 Works For: Self-Employed Gender: Female dwe-oss



36 to 12 Volt o DWE

3 days ago · A 36V to 12V DC/DC converter, also known as an inverter, converts the input DC voltage to a 36V stabilised DC voltage. DWE supplies DC/DC converters with various input ...



Frequently Asked Questions about Inverters

Frequently Asked Questions about Inverters How much battery capacity do I need with an inverter? As a rule of thumb, the minimum required battery capacity for a 12-volt system is ...

Inverter advice sought. 12 and 36 volt pure sine wave models.

Jan 18, 2022 · Looking for a 36 volt pure sine wave inverter for emergency power. Looking for something around 3000 watts. Any recommendations?? Second question ??: we bought a used ...



12 Volt or 24 Volt (10V to 30V) to 36 Volt 4 Amp DC/DC ...

12 Volt or 24 Volt (10V to 30V) to 36 Volt 4 Amp DC/DC Converter (Regulator) 150 Watt 12V to 36V DC/DC converter at low cost. Suitable for 36V boosting for use with automobile ...

matching a 300w 36v solar panel to my 12v battery and 12/24v inverter

May 22, 2014 · Hi, I am new to this technology but have been interested about solar energy since way back 30 years ago in high school, i recently acquired a solar pv system from a friend, ...



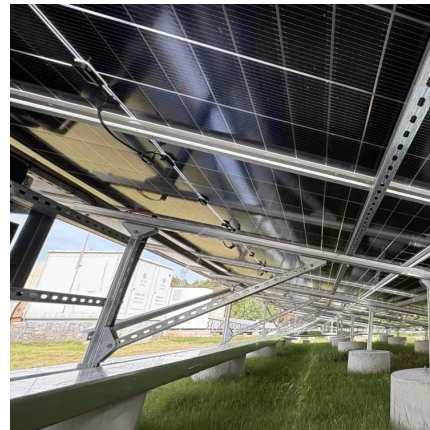


[Aims PWRINV500036W 5000 Watt 36 Volt](#)

The Aims pwrinv500036w 5000 Watt 36 Volt DC to AC power inverter can best used for large loads and 36V applications. Call us today!

[Battery charging with inverter and 12 dv battery](#)

May 5, 2019 · Find many great new & used options and get the best deals for 12V Car Cigarette lighter invert to 42V 1.5A light duty Charger for 36V battery at the best online prices at eBay! ...



[what to do with a 36volt battery bank????](#)

Jun 24, 2023 · 20hr is the standard rating - sometimes referred to as C20, so those 6V cells are 305Ah. There are 36V inverters. They're a little less common and a little more expensive. ...

[Convert 36v Solar Panel to 18v \(+ 12v/24v ...](#)

Apr 15, 2022 · This article will teach you how to convert 36v solar panels to 18v solar panels to charge a 12-volt battery. When converting your ...





[12V vs 24V Inverters Key Differences and ...](#)

Jan 21, 2025 · What is an Inverter? An inverter is a device that converts DC (direct current) power from sources like batteries or solar panels into AC ...

36 to 12 Volt o DWE

3 days ago · A 36V to 12V DC/DC converter, also known as an inverter, converts the input DC voltage to a 36V stabilised DC voltage. DWE supplies DC/DC converters with various input ...



Contact Us

For technical specifications, project proposals, or partnership inquiries, please visit:
<https://meble-decorator.pl>

Scan QR Code for More Information



<https://meble-decorator.pl>