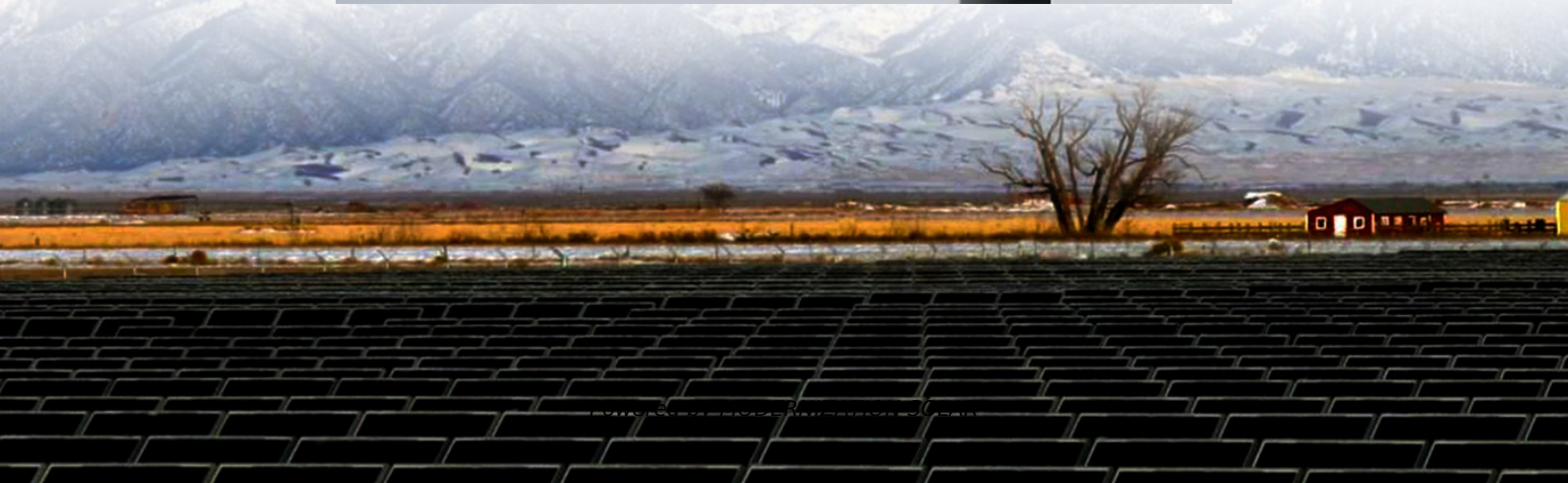


Can a 48v solar panel be directly connected to an inverter





Overview

How to wire a 48V inverter solar system?

Wiring a 48v inverter solar system involves several technical steps such as; Mount the solar panels in the location where they will capture the most sunlight. Ensure that the mounting structure is strong enough to support the panels and keep them at the orientation needed for maximum output. Connect the solar panels in series.

Can a 48 volt solar panel be used with a 12V inverter?

Nowadays, big houses, especially off-grid, tend to use 48 volt solar panels. Keep in mind that your inverter has to be compatible with the voltage of this system to be used. A 48V solar panel can be used with a 12V system if you choose the right equipment for it — a controller and an inverter.

Can you connect an inverter to a solar panel?

In theory, you can indeed connect an inverter directly to a solar panel, but usually it's necessary to install a special inverter designed to handle voltage fluctuations and convert them into a steady stream of constant voltage. This means using a solar charge controller and a battery, particularly for non-hybrid installations.

How does a hybrid inverter 48V work?

The main source to generate power for the hybrid inverter 48V is 48V solar panels. Solar panels help in the collection of electrical energy by absorbing sunlight. Solar panels convert this electrical energy into direct current.



Can a 48v solar panel be directly connected to an inverter



Can an inverter 5kw 48v work with solar panels?

Dec 2, 2025 · Conclusion In conclusion, a 5kw 48v inverter can work with solar panels, but it requires careful planning and consideration of voltage, power rating, and the use of a charge ...

How to Connect Solar Panels to 48v Inverter?

Jun 21, 2022 · The 48V inverter needs at least 2 solar panels in series, if 3 solar panels are connected in series, the performance of more panels may be better. The voltage for charging ...



Can A Solar Panel Be Connected Directly To An Inverter?

The maximum number of solar panels connected to an inverter depends on its wattage rating, which determines how much power inverter can handle. If you have a 5,000 W inverter, it can ...



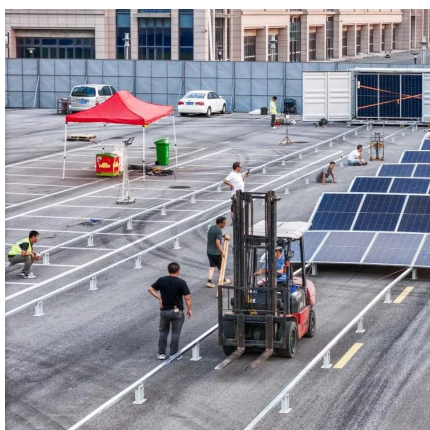
How to Connect Solar Panels to 48v inverter?

Jul 21, 2024 · Solar energy is a widely used clean energy, usually through the solar panels will be converted into electricity for human use, but the ...



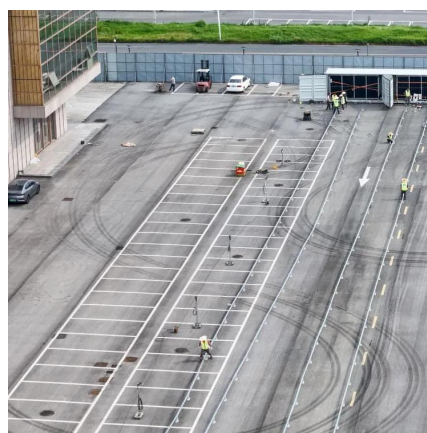
[Can I connect an inverter directly to a solar ...](#)

May 27, 2025 · There's a common question among solar energy enthusiasts: can you connect an inverter directly to a solar panel? Understanding the ...



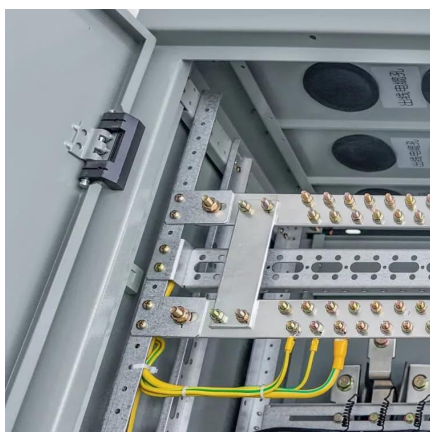
[How to Connect Solar Panels to 48v Inverter?](#)

Jun 21, 2022 · The 48V inverter needs at least 2 solar panels in series, if 3 solar panels are connected in series, the performance of more panels ...



[How to Connect Solar Panels to 48v inverter?](#)

How to connect solar panel and 48v inverter 1. Preparation before connection. Prepare the tools needed for the connection before connecting. Choose a suitable location to place the solar ...





Cracking the Code: Can a Solar Panel Be Connected Directly ...

Typically, a solar panel produces DC (Direct Current) electricity, which needs to be converted into AC (Alternating Current) electricity by an inverter to power your household appliances or feed ...

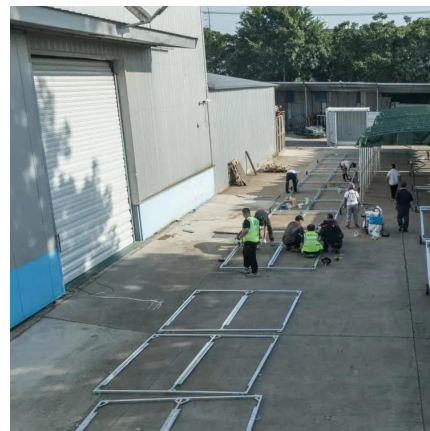


48V Inverter Solar Setup: Step-by-Step Connection

Jun 20, 2025 · A 48V solar inverter system is made up of carefully selected components like 48V solar panels, 48V sine wave inverter, 48V LiFePO4 battery bank, and 48V-rated accessories, ...

48V Inverter Solar Setup: Step-by-Step ...

Jun 20, 2025 · A 48V solar inverter system is made up of carefully selected components like 48V solar panels, 48V sine wave inverter, 48V LiFePO4 ...



How to Connect Solar Panels to 48v inverter?

Jul 21, 2024 · Solar energy is a widely used clean energy, usually through the solar panels will be converted into electricity for human use, but the direct conversion of electricity is DC, and ...



Can I connect an inverter directly to a solar panel

May 27, 2025 · There's a common question among solar energy enthusiasts: can you connect an inverter directly to a solar panel? Understanding the relationship between these



Can I Connect My Solar Panels Directly to My Inverter?

Oct 23, 2025 · Considering wiring your solar panels directly to your inverter? This sounds simple, but there's a whole lot more to it than just wiring wires. If you're installing solar panels, you'll ...

Can I Connect Solar Panel Directly to Inverter

No, connecting solar panels directly to an inverter is unsafe and inefficient. You need a charge controller to regulate voltage (typically 12V/24V/48V) and prevent cell overcharging. Grid-tied ...



Contact Us

For technical specifications, project proposals, or partnership inquiries, please visit:
<https://meble-decorator.pl>



Scan QR Code for More Information



<https://meble-decorator.pl>