

Can high frequency choke be used as inverter





Overview

Why do inverters use chokes?

Designed to isolate sensitive inverters from upstream grid disturbances, these chokes serve as a first line of defense for power integrity. High-frequency switching transients and common-mode voltages are key contributors to premature motor bearing failures.

What is a common mode choke?

A common mode choke is an electrical filter that blocks high frequency noise common to two or more data or power lines while allowing the desired DC or low-frequency signal to pass. Common mode (CM) noise current is typically radiated from sources such as unwanted radio signals, unshielded electronics, inverters and motors.

What are inverter isolation chokes?

If you're facing inconsistent drive performance, overheating of components, or compliance challenges with IEEE 519 standards—our Inverter Isolation Chokes addresses these challenges at their root. Designed to isolate sensitive inverters from upstream grid disturbances, these chokes serve as a first line of defense for power integrity.

Does a common mode choke have inductance?

My original design only included a common mode choke, however now that I am doing looking at my design again (still before manufacturing) and learned more about how those chokes work I noticed, that there will most likely be no inductance at all due to the common mode choke getting equal current on both windings causing them to cancel out.



Can high frequency choke be used as inverter

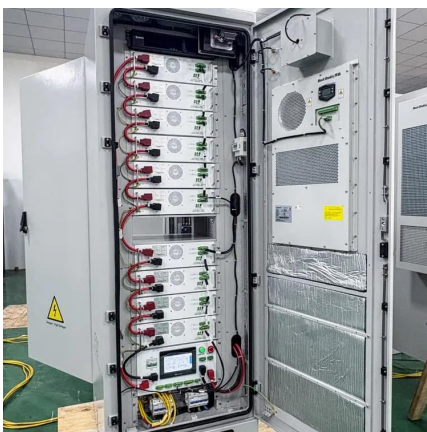


[A Guide to Understanding Common Mode Chokes , Coilcraft](#)

What is a Common Mode Choke? A common mode choke is an electrical filter that blocks high frequency noise common to two or more data or power lines while allowing the desired DC or ...

[A Guide to Understanding Common Mode ...](#)

What is a Common Mode Choke? A common mode choke is an electrical filter that blocks high frequency noise common to two or more data or ...



[Inverter with input and output chokes.](#)

Download scientific diagram , Inverter with input and output chokes. from publication: Modelling and Minimizing of High Frequency Leakage Currents in Adjustable Speed Drives , Today, ...

How to design a GaN power supply choke for a solar power inverter?

This may involve using high - quality materials and performing extensive testing during the design process. Our Role as a GaN Power Supply Choke Supplier As a GaN Power Supply Choke ...



[\(PDF\) Simplified Design of Common-Mode Chokes for ...](#)

Simplified design equations facilitate common-mode choke development for reducing ground currents in inverter drives. Chokes limit peak ground current to approximately 5 A, 10 A, or 15 A ...



Choke Product Overview

Inverter feeders with silicon carbide semiconductor technology or with 3-level technology (S3L inverters) clock with higher switching frequencies in the ...



Choke Product Overview

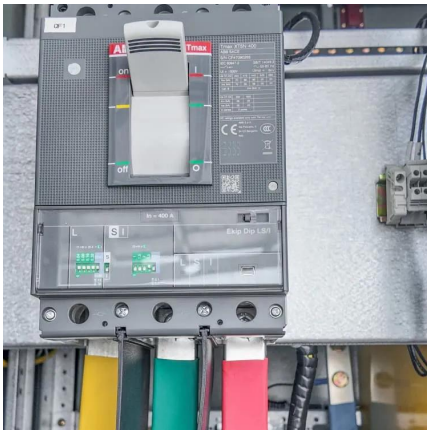
Inverter feeders with silicon carbide semiconductor technology or with 3-level technology (S3L inverters) clock with higher switching frequencies in the range 10 KHz to 120 KHz. The ...





Inverter Isolation Chokes , Inverter EMI Chokes , Power Inverter ...

Sep 2, 2025 · High-frequency switching transients and common-mode voltages are key contributors to premature motor bearing failures. Our isolation chokes suppress these high ...



Frequency inverter with AC line reactor or DC choke?

It provides additional protection for the frequency inverter front (Converter) end while proper ground of the Source to inverter, frequency inverter to Motor and Motor to Voltage Source ...

Common mode choke and inductor for inverter circuit

Jan 15, 2023 · I am building an inverter that uses an H-Bridge and PWM to generate something that should get close to a sine wave. My original design only included a common mode choke, ...



Inverter with input and output chokes.

Download scientific diagram , Inverter with input and output chokes. from publication: Modelling and Minimizing of High Frequency Leakage ...



Common mode choke and inductor for ...

Jan 15, 2023 · I am building an inverter that uses an H-Bridge and PWM to generate something that should get close to a sine wave. My original ...

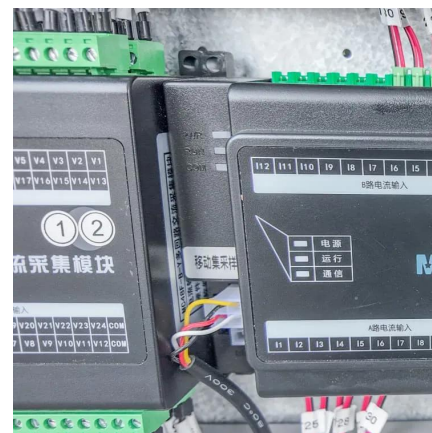


Use of choke at inverter input

Oct 30, 2024 · Inductors are used as an important and key component at the input of inverters. The main applications of chokes at the input of inverters are: 1. Harmonics reduction: Chokes ...

Common Mode Chokes , Triad Magnetics

Nov 21, 2025 · A choke is a magnetic inductor used to block or limit unwanted high-frequency alternating current (AC) while allowing the ...



Use of choke at inverter input

Oct 30, 2024 · Inductors are used as an important and key component at the input of inverters. The main applications of chokes at the input of inverters ...



Common Mode Chokes , Triad Magnetics

Nov 21, 2025 · A choke is a magnetic inductor used to block or limit unwanted high-frequency alternating current (AC) while allowing the desired lower frequency direct current (DC) to pass ...



Contact Us

For technical specifications, project proposals, or partnership inquiries, please visit:
<https://meble-decorator.pl>

Scan QR Code for More Information



<https://meble-decorator.pl>