

Can the earthquake base station still communicate if it is disconnected





Overview

Do earthquakes affect communication base stations?

Analyzing and summarizing these observed seismic damages can enhance our understanding of the impairment of communication base stations during earthquakes, providing valuable information for establishing a Bayesian network model for functionality loss.

What happens if a Tokyo earthquake hits a base station?

However, as in the case of the Noto Peninsula Earthquake, communication can be disrupted if base stations and other facilities are damaged during a disaster. Even in the event of an earthquake directly beneath the Tokyo metropolitan area, communications will most likely be interrupted by large-scale fires.

Do communication base stations perform post-earthquake functionality using Bayesian network?

A method to evaluate the post-earthquake functionality of communication base stations using Bayesian network is developed. The dependence between the equipment and its hosting building structure, and the impact of power outages are considered. The method is validated using seismic damage data from the Ludian Earthquake.

How many base stations were damaged in a quake?

According to post-earthquake statistics, a total of 14,896 base stations were damaged in the 2008 Wenchuan earthquake, 724 base stations were interrupted in the 2013 Lushan earthquake, 234 base stations were out of service in the 2017 Jiuzhaigou earthquake, and 385 base stations were interrupted in the 2019 Changning earthquake .



Can the earthquake base station still communicate if it is disconnected



Communication in time of disaster: Lessons from the Noto ...

Oct 4, 2024 · However, as in the case of the Noto Peninsula Earthquake, communication can be disrupted if base stations and other facilities are damaged during a disaster. Even in the event ...

Earthquake-resistant communication base station EMS tower

Do earthquakes affect communication base stations? Analyzing and summarizing these observed seismic damages can enhance our understanding of the impairment of communication base ...



Earthquake Rescue Site Emergency Communication ...

After the big earthquake usually cause common communication facilities damage caused serious damage, even cause the disaster area can't contact to the outside world cannot for disaster ...



Post-Earthquake Functional State Assessment of Communication Base

Download Citation , On Aug 1, 2024, Fan Li and others published Post-Earthquake Functional State Assessment of Communication Base



Station Using Bayesian Network , Find, read and ...



[Communication Base Station Seismic Rating , Huijue Group ...](#)

Why Earthquake Resistance Defines Modern Infrastructure Survival? When a 7.8-magnitude earthquake struck Türkiye in February 2023, communication base stations with subpar seismic ...



Post-earthquake functional state assessment of communication base

Dec 1, 2024 · There is a lack of models that can fully evaluate the post-earthquake functional states of base stations with the consideration of the dependencies between different ...



[Reliability prediction and evaluation of communication base](#)

Jun 2, 2023 · One of the primary tasks for effective disaster relief after a catastrophic earthquake is robust communication. In this paper, we propose a simple logistic method based on two ...





[Extending network coverage by using static and mobile ...](#)

Jan 25, 2016 · Abstract--During natural disasters, such as earthquakes, a part of the Internet access infrastructure can be damaged, leaving many users disconnected. At the same time, ...

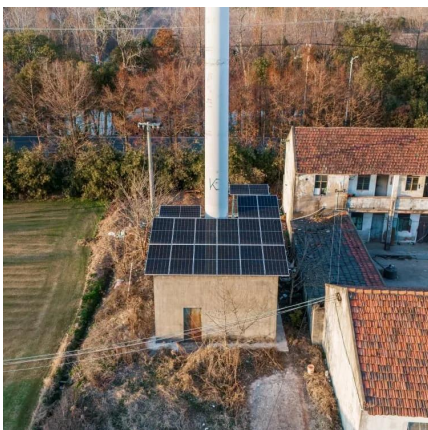


[Earthquake Center, This Is Your Data Calling](#)

May 2, 2025 · The Earthquake Center commonly uses 900 MHz radio relays to communicate between stations in remote areas where other communication options aren't practical or ...

[Communication in time of disaster: Lessons ...](#)

Oct 4, 2024 · However, as in the case of the Noto Peninsula Earthquake, communication can be disrupted if base stations and other facilities are ...



Reliability prediction and evaluation of communication base stations ...

Jun 2, 2023 · Abstract One of the primary tasks for effective disaster relief after a catastrophic earthquake is robust communication. In this paper, we propose a simple logistic method based ...



Contact Us

For technical specifications, project proposals, or partnership inquiries, please visit:
<https://meble-decorator.pl>

Scan QR Code for More Information



<https://meble-decorator.pl>