

# **Characteristics of wind power generation system**





## Overview

---

What are the characteristics of a wind turbine generator?

Various wind turbine generator designs, based on classification by machine type and speed control capabilities, are discussed along with their operational characteristics, voltage, reactive power, or power factor control capabilities, voltage ride-through characteristics, behavior during short circuits, and reactive power capabilities.

What is wind power?

Wind power is a form of energy conversion in which turbines convert the kinetic energy of wind into mechanical or electrical energy that can be used for power. Wind power is considered a form of renewable energy. Modern commercial wind turbines produce electricity by using rotational energy to drive a generator.

What is wind power generation?

Wind power generation is power generation that converts wind energy into electric energy. The wind generating set absorbs wind energy with a specially designed blade and converts wind energy to mechanical energy, which further drives the generator rotating and realizes conversion of wind energy to electric energy.

What are the components of wind power generation system?

In terms of configuration, wind power generation system normally consists of wind turbine, generator, and grid interface converters where the generator is one of the core components. There are the following wind power generation technologies such as synchronous generator, induction generator, and doubly fed induction generator.



## Characteristics of wind power generation system

---



### Extraction of Basic Features and Typical ...

Jul 18, 2025 · A key problem lies in how to effectively characterize and model these fluctuations to guide the design of reliable and economical energy ...

### Wind power , Description, Renewable Energy, Uses, ...

Nov 21, 2025 · Wind power is a form of energy conversion in which turbines convert the kinetic energy of wind into mechanical or electrical energy that can be used for power. Wind power is ...



### **Extraction of Basic Features and Typical Operating Conditions of Wind**

Jul 18, 2025 · A key problem lies in how to effectively characterize and model these fluctuations to guide the design of reliable and economical energy storage systems. The problems of grid ...



## **Wind Energy Factsheet**

3 days ago · Wind Resources and Potential  
Approximately 2% of solar energy striking Earth's surface is converted into kinetic energy in wind.<sup>1</sup> Wind turbines convert this kinetic energy to ...





## Wind Power Generation

Wind power generation is defined as the conversion of wind energy into electrical energy using wind turbines, often organized in groups to form wind farms, which provides a clean and ...



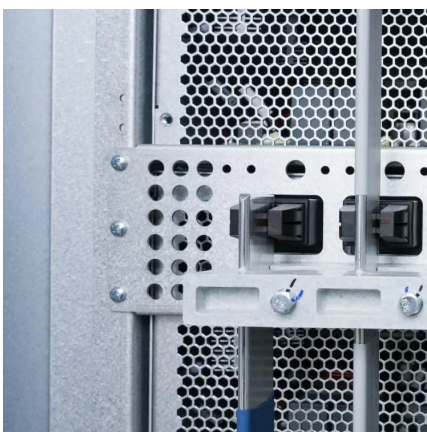
### [Wind Power Generation , SpringerLink](#)

Oct 1, 2025 · This chapter comprehensively discusses wind power generation, tracing its evolution from historical windmills to modern large-scale wind farms, and analyzing its technical ...



### [Analysis on Dynamic Characteristics of Wind Power Systems](#)

Dec 10, 2023 · Wind power systems play a vital role within renewable energy microgrid systems. The establishment of precise wind power models and the investigation of their dynamic ...





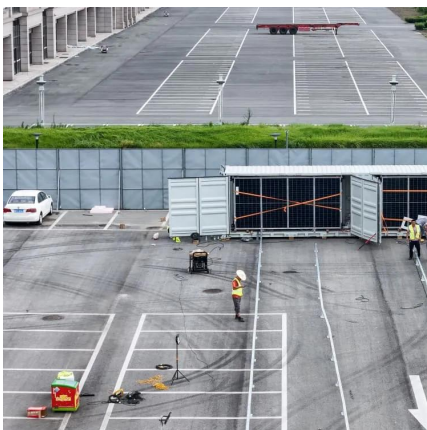
## UNIT II

Nov 12, 2020 · Wind power as a generation source has specific characteristics, including variability, geographical distribution, favourable economics. Large-scale integration of both ...



### Characteristics of wind turbine generators for wind power ...

Jul 30, 2009 · This paper presents a summary of the most important characteristics of wind turbine generators applied in modern wind power plants. Various wind turbine generator ...



### Characteristics of Wind Turbine Generators for Wind ...

May 10, 2021 · of wind turbine generators applied in modern wind power plants. Various wind turbine generator designs, based on classification by machine type and speed control ...



### How Do Wind Turbines Work? \_ Department of Energy

2 days ago · Primus WindPower , 44231 Small turbines can be used in hybrid energy systems with other distributed energy resources, such as microgrids powered by diesel generators, ...



## Wind Energy Factsheet

3 days ago · Wind Resources and Potential  
Approximately 2% of solar energy striking Earth's surface is converted into kinetic energy in wind.1 Wind ...



## Contact Us

---

For technical specifications, project proposals, or partnership inquiries, please visit:  
<https://meble-decorator.pl>

## Scan QR Code for More Information



<https://meble-decorator.pl>