

Communication tower base station safety distance





Overview

How far does a cell phone tower fall from a base station?

In most cases, having a cell phone tower on the roof of your building will create a shadow zone immediately underneath it. This zone is therefore exposed to much less radiation. Consequently, a tower's primary "radiation lobe" (main beam) falls around 50-300 meters (0.03 - 0.18 miles) from the base station mast at a 5-10° angle.

Is it possible to predict a safe distance from cell towers?

It is also difficult to predict a safe distance from cell towers. For example, cell towers are designed to transmit most of their radio frequency (RF) energy horizontally. Some areas below the tower may have lower levels than locations farther away that are more in line with the vertical height of the antennas.

How far away are mobile towers safe?

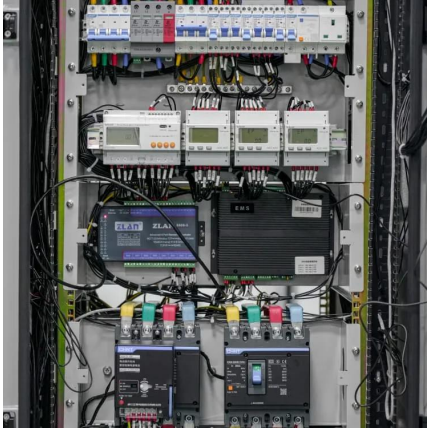
The distance needed to reduce exposures down to the General Public Precautionary Level of 100 microwatts per meter squared ($\mu\text{W}/\text{m}^2$) is often around a quarter of a mile (1320 feet or 400 meters) or more. Thus, If you find mobile towers located a minimum of 400 meters (0.24 miles) away, you are most likely safe.

How do I know if a mobile tower is EMF safe?

However, the best way to test for yourself is with an EMF radiation meter. Mobile towers work differently from other EMF-emitting devices, such as a WiFi router, and so have different ways of looking at minimum safe distances.



Communication tower base station safety distance



What Distance is Safe?

Safe Distance from Cell Towers... It is also difficult to predict a safe distance from cell towers. For example, cell towers are designed to transmit most of their radio frequency (RF) energy ...

Safe Distances for Avoiding Mobile Tower Radiation

2 days ago · So, what are safe distances for avoiding mobile tower radiation? While all mobile and cell phone towers give out different levels of radiation, a minimum safe distance to avoid the ...



CELL PHONE TOWER BASE STATION SAFETY AND ...

Oct 12, 2021 · This paper introduce the worthy approaches to protect the Tower Base station and continuous undisturbed operations of Tower base station. Safety Monitoring in the Base ...



Safety Distance Calculations for Macrocell Mobile Base Station ...

Nov 19, 2017 · Wireless mobile communication networks have become essential for human life. A great booming and huge investments are devoted to develop the services without taking



into ...



What is the Safe Distance From Cell Towers?

What's the Safe Distance From a Mobile Phone Tower? Radiation energy from a mobile tower decreases with distance. It is usually at its strongest within a 50- meter distance from the ...



Communication Base Station Safety Standards , Huijue ...

As 5G deployments accelerate globally, communication base station safety standards face unprecedented challenges. Did you know that 68% of urban base stations now operate ...



Safe Distances for Avoiding Mobile Tower Radiation

Mobile Tower Radiation and Exposure Measuring EMF Radiation from A Mobile Tower Reducing Mobile Tower Radiation
Exposure Conclusion During my research into safe distances for avoiding mobile tower radiation, I found that it's more complex than discussing other forms of EMF radiation. The shadow zones around a mobile tower are definitely worth remembering, but so is the fact that not all mobile towers are the same. It'd be best to use



these distances as a rough guide, but to get See more on emfadvice EMF Center

What Distance is Safe? - EMF Center

Safe Distance from Cell Towers... It is also difficult to predict a safe distance from cell towers. For example, cell towers are designed to transmit most ...

Evaluated minimum safe distances for mobile-communication base stations

Aug 5, 2024 · In Table 1 are presented the minimum safe distances for GSM 900, GSM 1800 and 3G base stations, in terms of public and occupational exposure.



[How Far Should You Live from a Cell Phone Tower? Insights ...](#)

May 30, 2025 · Explore how far you should live from a cell phone tower for safe EMF exposure levels. Learn what Israeli, European, and U.S. studies say about health risks and ...

[Base stations and networks](#)

5 days ago · Mobile phones and mobile devices require a network of radio base stations to function. Radio waves have been used for communication for more than 100 years.





Mobile Phone Base Stations EMF / Health Fact Pack

Mar 28, 2025 · A base station is comprised of several different components - including an equipment shelter, a tower or mast which provides the necessary height to give better ...

What is the Safe Distance From Cell Towers?

What's the Safe Distance From a Mobile Phone Tower? Radiation energy from a mobile tower decreases with distance. It is usually at its strongest ...



Contact Us

For technical specifications, project proposals, or partnership inquiries, please visit:
<https://meble-decorator.pl>

Scan QR Code for More Information



<https://meble-decorator.pl>