

Container signal base station installed on the roof





Overview

How should a base station antenna be installed?

The hardware installation guidelines are limited but important for reliable base station performance. The base station antenna should be installed in open sky conditions, away from external influences that hinder the direct line of sight between the antenna and the GNSS satellites.

What is a base station antenna?

The base station antennas transmit and receive RF (radio frequency) signals, or radio waves, to and from mobile phones near the base station. Without these radio waves, mobile communications would not be possible. Radio waves have been used for communication for more than 100 years. Radio and television broadcasting are well-known examples of this.

Where should an antenna be installed?

In general, this means that the ideal antenna installation is near the centre of the work area. For larger work areas (several 10's of km's), it is advised to place several base stations for optimal performance and easy selection of the nearest base station.

Do mobile phones need a base station?

Mobile phones and other mobile devices require a network of base stations in order to function. The base station antennas transmit and receive RF (radio frequency) signals, or radio waves, to and from mobile phones near the base station. Without these radio waves, mobile communications would not be possible.



Container signal base station installed on the roof

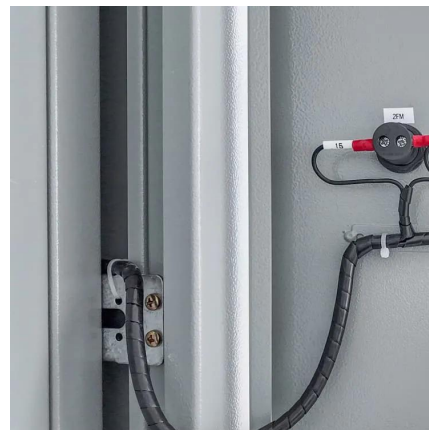


[DIY Shipping Container Roof Tutorial \(For Beginners\)](#)

Nov 22, 2025 · Learn how to build a DIY shipping container roof quickly and efficiently. Step-by-step guide for a durable, ...

[How solar-powered base station signals are transmitted](#)

Feb 22, 2024 · The generated electricity powers the base station, 3. Signals are transmitted using radio waves, 4. Energy storage systems ensure continuous operation. Solar panels are ...



[Gas station container roof module - KC-DM](#)

The roof module is used to cover the fueling area of a gas station container. It offers a headroom of 4500 mm and provides protection from sun, rain and snow. The supporting frame consists ...

[How to set up a base station - Chapter 3:](#)

...

Installation of the antenna The hardware installation guidelines are limited but important for reliable base station performance. The base station antenna ...



[What Are Base Station Antennas? Complete ...](#)

Nov 20, 2024 · In modern telecommunications systems, the base station antenna stands out as an undeniable and crucial component to facilitate ...



[Shipping Container Roof Options: Kits, Types & Installati...](#)

May 30, 2025 · Discover the best shipping container roof systems, from prefab kits to custom builds. Learn about styles, benefits, and installation tips.



[Supporting structures for a radio base station on a roof](#)

Jan 27, 2025 · Supporting structure for a radio base station solely for telecommunications services in the form of an equipment cabinet on the roof of a building Length of cabinet





[How to set up a base station - Chapter 3: Hardware installation](#)

Installation of the antenna The hardware installation guidelines are limited but important for reliable base station performance. The base station antenna should be installed in open sky ...



[Safe Operations Near Roof Cellular Base](#)

...

Mar 1, 2008 · Firefighters must be aware of rooftop cellular base stations when responding to fires in multi-story buildings, as these structures pose ...

[Zhangjiang Port Terminal Improves Safety with an ...](#)

Dec 21, 2022 · The company wanted to optimize floating roof monitoring to prevent roof tilt and costly shutdowns, minimize maintenance and ensure tank and person-nel safety. In other ...



[Shipping Container Roof Plans](#)

When planning to install a roof for your shipping container, reviewing our Shipping Container Roof Plans is crucial to ensure a smooth and successful project. Using an Archcore Roof System, ...



Shipping Container Roof Plans

When planning to install a roof for your shipping container, reviewing our Shipping Container Roof Plans is crucial to ensure a smooth and ...



How solar-powered base station signals are ...

Feb 22, 2024 · The generated electricity powers the base station, 3. Signals are transmitted using radio waves, 4. Energy storage systems ensure ...



Global Ports terminal launches base station ...

Oct 7, 2021 · In addition, the base station equipment which was installed at a height of 35 meters, enables uninterrupted operation of mobile devices ...



Shipping Container Roof System: Creating ...

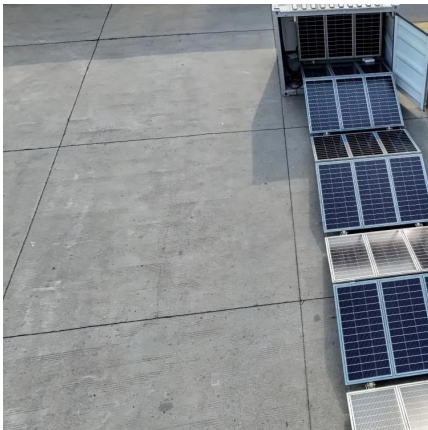
Dec 26, 2023 · From attaching a roof to your container to exploring innovative roof solutions, we've got you covered. Whether you're a DIY ...





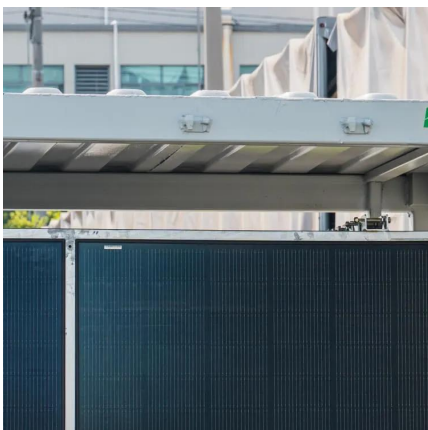
[7 Shipping Container Roof Ideas](#)

Dec 2, 2024 · Explore 7 ideas for shipping container roofs, from metal roofs for solar panels and rainwater collection to timber pergolas and roof decks for great sunset views.



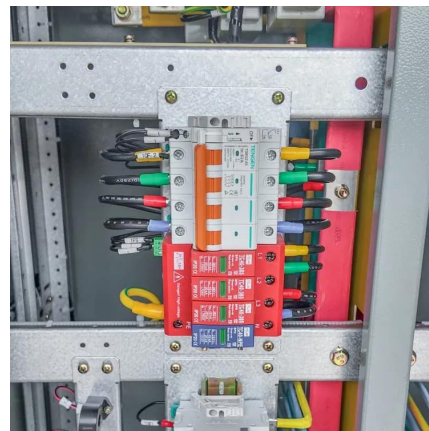
[Shipping Container Structural Components and Terminology](#)

Figure 4.1 Primary Structural Components for a Typical 20' ISO Shipping Container. Note: On some ISO shelters, some of the primary structural components may be concealed within the ...



[Gateway and Base Station Installation Guide](#)

Aug 11, 2018 · Installation Planning IMPORTANT: This document provides guidelines for the proper placement and installation of Gateways, Base Stations, and the antennas. Failure to ...



[How to install an AIS station? . MarineTraffic](#)

AIS Receiver The station is equipped with an AIS receiver, enabling continuous monitoring of ship traffic in a specific area for greater safety at sea. Various AIS receivers have been shipped for ...



Base stations and networks

Base Stations Enable Mobile Communications
Antennas Are Placed in Various Locations
More Mobile Devices Means More Base Stations
Base Station Output Power Is Low
Exposure Limits Are Set by Independent Organizations
Exposure Levels Are Much Lower Than The Limits
Public Access Is Restricted Where Needed
No Adverse Health Effects According to The Who
The base station antennas are usually placed on rooftops, in masts or on building walls. Antennas are sometimes also installed in shopping malls, airports, offices, and other places with many mobile phone users. Indoor antennas are usually placed on walls or on ceilings. See more on ericsson Emerson[PDF]



Zhangjiang Port Terminal Improves Safety with an ...

Dec 21, 2022 · The company wanted to optimize floating roof monitoring to prevent roof tilt and costly shutdowns, minimize maintenance and ensure tank and person-nel safety. In other ...



Supporting structures for a radio base station ...

Jan 27, 2025 · Supporting structure for a radio base station solely for telecommunications services in the form of an equipment cabinet on the ...

Base stations and networks

4 days ago · Base stations enable mobile communications
Mobile phones and other mobile devices require a network of base stations in order to function. The base station antennas ...



Mobile Phone Base Stations and RF Radiation ...

Jul 4, 2024 · The MNOs have installed mobile phone base stations island-wide to cater for users' demand and must meet IMDA's quality of service ...



Understanding DAS Antenna Design

Dec 22, 2019 · A Base Transceiver Station (BTS) is a source of cellular signal and allows the RF signal to be broadcast over the entire DAS ...



Common ways to set up a base station

Dec 1, 2025 · When a base station device connects to IBSS, the base station name is checked against existing managed and unmanaged base ...



Shipping Container Structural Components ...

Figure 4.1 Primary Structural Components for a Typical 20' ISO Shipping Container. Note: On some ISO shelters, some of the primary structural ...



Contact Us

For technical specifications, project proposals, or partnership inquiries, please visit:
<https://meble-decorator.pl>

Scan QR Code for More Information



<https://meble-decorator.pl>