

Cylindrical lithium iron phosphate battery small size





Overview

What are the different types of lithium phosphate batteries?

1. Cylindrical LiFePO₄ Cells Cylindrical LiFePO₄ cells are the most commonly used type of lithium iron phosphate batteries. They resemble the shape of traditional AA or AAA batteries and are widely employed in applications where high power and durability are essential.

What are lithium iron phosphate (LiFePO₄) batteries?

Lithium iron phosphate (LiFePO₄) batteries are known for their high safety, long cycle life, and excellent thermal stability. They come in three main cell types: cylindrical, prismatic, and pouch. Each of these types has distinct characteristics that make them suitable for various applications.

What is a lithium iron phosphate battery?

A lithium iron phosphate battery is a type of lithium ion battery that uses lithium iron phosphate as the positive electrode material. It is considered a new generation of lithium ion battery due to its advantages such as high safety, long cycle life, rate discharge, and high temperature resistance.

What is a cylindrical lithium ion battery?

Cylindrical cells one of the most widely used lithium ion battery shapes due to ease to use and good mechanical stability. The tubular cylindrical shape can withstand high internal pressures without collapsing. Melasta produces multiple sizes and capacities according to the customer requirement.



Cylindrical lithium iron phosphate battery small size



[Your Guide to Selecting Small LifePo4 Batteries](#)

Aug 20, 2024 · In our increasingly tech-savvy world, the importance of choosing the right power source cannot be overstated. Small LifePo4 (Lithium Iron Phosphate) batteries have gained ...

[Cylindrical lithium iron phosphate battery small size](#)

Cylindrical lithium iron phosphate battery small size What is a cylindrical lithium ion battery? Cylindrical cells one of the most widely used lithium ion battery shapes due to ease to use and ...



[12V Cylindrical Cell Lithium Iron Phosphate Battery - High](#)

Mar 8, 2025 · 12V Cylindrical Cell Lithium Iron Phosphate Battery: Compact, High-Performance Energy Storage The 12V Cylindrical Cell Lithium Iron Phosphate (LiFePO4) Battery is a high ...

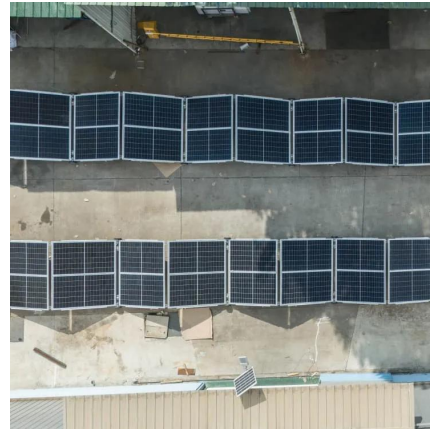


3.2V 22ah Power Cylindrical LiFePO4 Lithium Iron Phosphate Battery

Dec 4, 2025 · 3. 90% of the energy of lithium iron phosphate battery is concentrated in the small range of 3-3.2v, the discharge characteristics are



very stable. 4. voltage stability, far better ...



Types of LiFePO4 Battery Cells: Cylindrical, ...

6 days ago · Lithium iron phosphate (LiFePO4) batteries are known for their high safety, long cycle life, and excellent thermal stability. They come in ...

32140FS Li-Ion Battery

Lithium Iron Phosphate Grade A Cylindrical 32140 15Ah 3.2V LiFePO4 Battery for 48V 72V E-bike Scooter. High capacity, small size, 4000 cycles. OEM/ODM., Alibaba



Cylinder LiFePO4 rechargeable battery cells

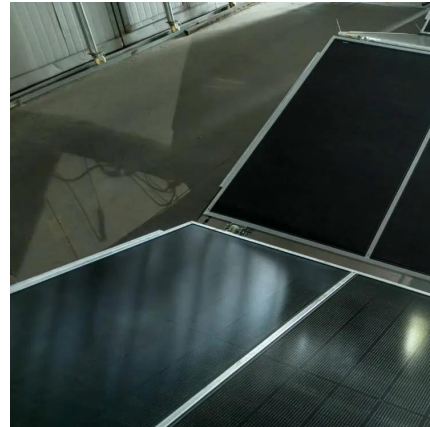
Pkenergy sells Class A cylindrical lithium iron phosphate cells in various sizes. These batteries last longer and have a higher depth of discharge.

...



[3.2V 22ah Power Cylindrical LiFePO4 Lithium ...](#)

Dec 4, 2025 · 3. 90% of the energy of lithium iron phosphate battery is concentrated in the small range of 3-3.2v, the discharge characteristics ...



[Cylinder LiFePO4 rechargeable battery cells](#)

Pkenergy sells Class A cylindrical lithium iron phosphate cells in various sizes. These batteries last longer and have a higher depth of discharge. Customers can wholesale according to different ...

[Types of LiFePO4 Battery Cells: Cylindrical, Prismatic, and ...](#)

6 days ago · Lithium iron phosphate (LiFePO4) batteries are known for their high safety, long cycle life, and excellent thermal stability. They come in three main cell types: cylindrical, ...



Cylindrical LiFePO4 Cells

Premium cylindrical LiFePO4 cells with 3,000+ cycle life, fast charging, and superior safety. Available in 18650, 26650, 32650 formats for industrial applications, energy storage, and ...



Mini Size 12V 300Ah LiFePO4 Lithium Battery, Smart 200A ...

Buy CYCCLEVOLT Mini Size 12V 300Ah LiFePO4 Lithium Battery, Smart 200A BMS Low Temp Protection Rechargeable Battery, 10000+ Deep Cycle Lithium Iron Phosphate for Off-Grid, RV, ...



LiFe-Shenzhen Melasta Battery Co., Ltd

Jul 4, 2023 · LiFePO4 is the formula name of Lithium Iron Phosphate, also known as LFP. The nominal voltages of this battery chemistry are 3.2V. It replaced other battery technologies ...

Contact Us

For technical specifications, project proposals, or partnership inquiries, please visit:
<https://meble-decorator.pl>

Scan QR Code for More Information



<https://meble-decorator.pl>