

# DC AC inverter bridge





## Overview

---

What is a bridge inverter?

A bridge inverter is defined as a type of inverter that converts DC power into AC power using a full bridge configuration of semiconductor switches, such as MOSFETs or IGBTs, and is primarily used for applications like variable speed drives and grid integration of renewable energy. How useful is this definition?

.

What is a full bridge inverter?

Full bridge inverter is a topology of H-bridge inverter used for converting DC power into AC power. The components required for conversion are two times more than that used in single phase Half bridge inverters. The circuit of a full bridge inverter consists of 4 diodes and 4 controlled switches as shown below.

What type of inverter is used to convert DC voltage to AC?

Inverters are used to convert the DC voltage into AC. A single-phase full-wave bridge inverter which is also called an H-bridge inverter is presented in Fig. 4.78. The switches S1 and S2 are the single pole double through switches.

How does a DC inverter work?

Converts DC to AC power by switching the DC input voltage (or current) in a pre-determined sequence so as to generate AC voltage (or current) output. Output of the inverter is “chopped AC voltage with zero DC component”. It contain harmonics.



## DC AC inverter bridge

---



### [Full Bridge Inverter - Circuit, Operation, Waveforms & Uses](#)

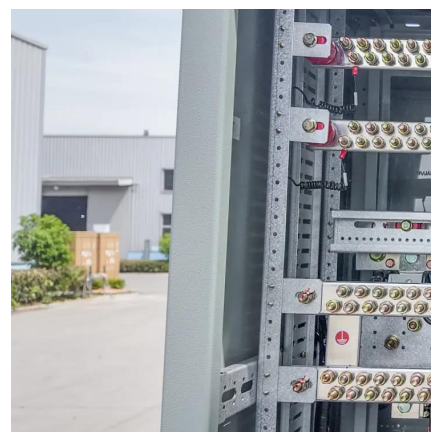
What Is A Full Bridge inverter ? Operation of Full Bridge with R Load Waveform of Full Bridge with R Load Full Bridge Operation with L and RL Load Full Bridge with RLC Load Parameters Comparison of Full Bridge of All Loads Full bridge inverter is a topology of H-bridge inverter used for converting DC power into AC power. The components required for conversion are two times more than that used in single phase Half bridge inverters. The circuit of a full bridge inverter consists of 4 diodes and 4 controlled switches as shown below. These diodes... See more on electrical technology circuit diagrams

### **Full Bridge Inverter: Circuit, Waveforms, Working And ...**

Jun 2, 2025 · A full bridge inverter is a switching device that generates square wave AC voltage in the output on application of DC voltage.

### **Full bridge inverter**

Sep 10, 2024 · This article delves into the working principle, design considerations, and key applications of the full bridge inverter across ...



### **Single-Stage Single-Phase Isolated Full-Bridge Buck-Boost DC-AC Inverters**



Mar 25, 2025 · This article presents a simple high-frequency transformer (HFT) isolated buck-boost inverter designed for single-phase applications. The proposed HFT isolated ...

### [Full Bridge Inverter - Circuit, Operation, Waveforms & Uses](#)

2 days ago · What is a Full Bridge Inverter ? Full bridge inverter is a topology of H-bridge inverter used for converting DC power into AC power. The components required for conversion are two ...



### [Voltage Fed Full Bridge DC-DC & DC-AC Converter High ...](#)

Apr 1, 2023 · In many applications, it is important for an inverter to be lightweight and of a relatively small size. This can be achieved by using a High-Frequency Inverter that involves an ...

### [Full-Bridge Inverter Circuits , Tutorials on ...](#)

2 days ago · 1.1 Basic Operation and Topology A full-bridge inverter is a power electronic circuit that converts DC to AC by strategically switching ...







## [DC to AC Converters Inverters](#)

Nov 21, 2017 · Output of the inverter is "chopped AC voltage with zero DC component". It contain harmonics. An LC section low-pass filter is normally fitted at the inverter output to reduce the ...

## [Full Bridge Inverter: Circuit, Waveforms, Working And ...](#)

Jun 2, 2025 · A full bridge inverter is a switching device that generates square wave AC voltage in the output on application of DC voltage.



## [Converting DC to AC: Basic Principles of ...](#)

May 28, 2024 · This article investigates the basic principles of inverters, different types of DC-to-AC conversion, and common applications for ...

## [Converting DC to AC: Basic Principles of Inverters](#)

May 28, 2024 · This article investigates the basic principles of inverters, different types of DC-to-AC conversion, and common applications for generating AC voltage in manufacturing.





## Full-Bridge Inverter Circuits , Tutorials on Electronics , Next ...

2 days ago · 1.1 Basic Operation and Topology A full-bridge inverter is a power electronic circuit that converts DC to AC by strategically switching four power semiconductor devices (typically ...



## [How a Full Bridge Inverter Converts DC to AC](#)

An electrical inverter is a power electronic circuit designed to convert direct current (DC) power, typically from a battery or solar panel, into alternating current (AC) power. AC power is ...

## Full bridge inverter

Sep 10, 2024 · This article delves into the working principle, design considerations, and key applications of the full bridge inverter across different industries. What is a full bridge inverter? ...



## Bridge Inverter

A bridge inverter is defined as a type of inverter that converts DC power into AC power using a full bridge configuration of semiconductor switches, such as MOSFETs or IGBTs, and is primarily ...





## Contact Us

---

For technical specifications, project proposals, or partnership inquiries, please visit:  
<https://meble-decorator.pl>

### Scan QR Code for More Information



<https://meble-decorator.pl>