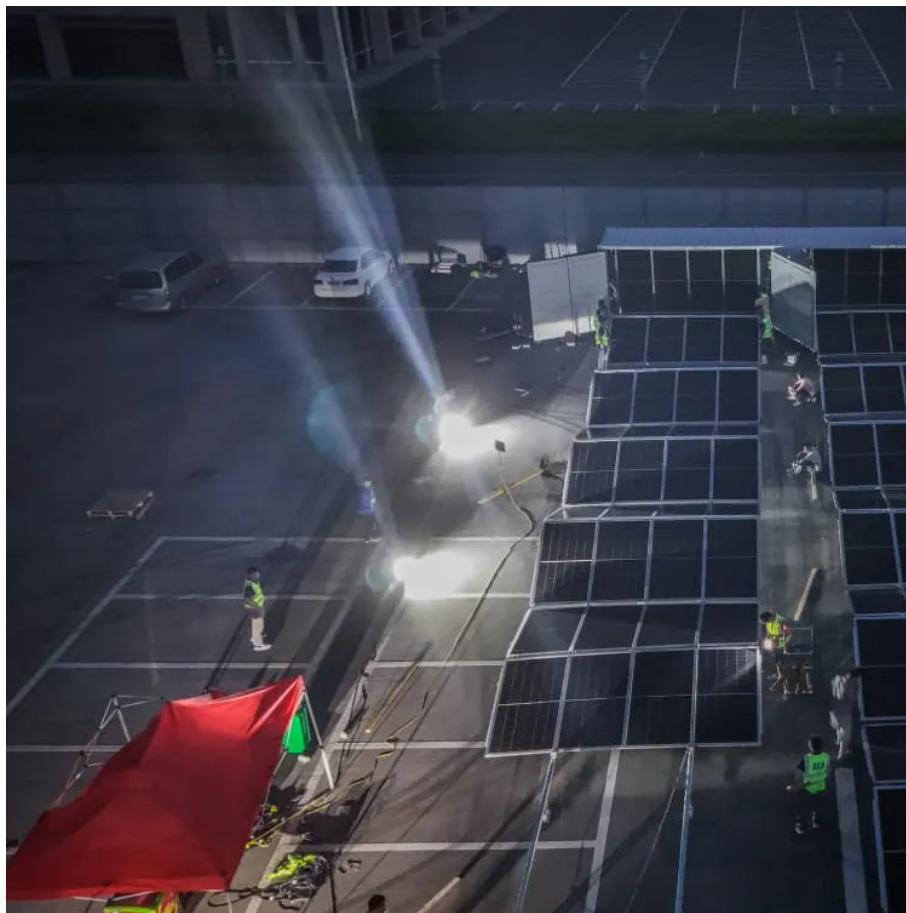


# **Do base station batteries share power How to connect them**





## Overview

---

How does a base battery work?

This process is called grid-balancing. Base batteries deploy energy to the grid faster than any other service, which is how Base is able to recoup the cost of the battery equipment and keep prices low for homeowners. The charge level of your Base battery will naturally fluctuate over time, rising and falling throughout a multi-day cycle.

What is a base battery system?

The Base battery system is built for performance and reliability. It combines a high-capacity lithium iron battery with intelligent software to optimize energy use. The Base battery system has three main components: the battery pack, inverter, and hub. The long white unit is the battery pack. We mount the battery pack on the ground.

What makes a telecom battery pack compatible with a base station?

Compatibility and Installation Voltage Compatibility: 48V is the standard voltage for telecom base stations, so the battery pack's output voltage must align with base station equipment requirements. Modular Design: A modular structure simplifies installation, maintenance, and scalability.

Which battery is best for telecom base station backup power?

Among various battery technologies, Lithium Iron Phosphate (LiFePO<sub>4</sub>) batteries stand out as the ideal choice for telecom base station backup power due to their high safety, long lifespan, and excellent thermal stability.



## Do base station batteries share power How to connect them

---



### [Overview of Telecom Base Station Batteries](#)

Definition Telecom base station battery is a kind of energy storage equipment dedicatedly designed to provide backup power for telecom base stations, ...

### [Telecom Base Station Backup Power Solution: ...](#)

Jun 5, 2025 · Discover the 48V 100Ah LiFePO4 battery pack for telecom base stations: safe, long-lasting, and eco-friendly. Optimize reliability with ...



### [Stationeers Base Power Guide: Networks & Solar Setup](#)

Sep 25, 2025 · Building on the foundation from Lunar Base Establishment, the power system expands from three basic networks to a regional distribution model: Root Network: Primary ...

### [Do base station batteries share power How to connect them](#)

What happens if a base station battery is overcharged? For instance, a high voltage and overcharged lead-acid battery can lose its power capacity and leads to disruption. A cleaned ...



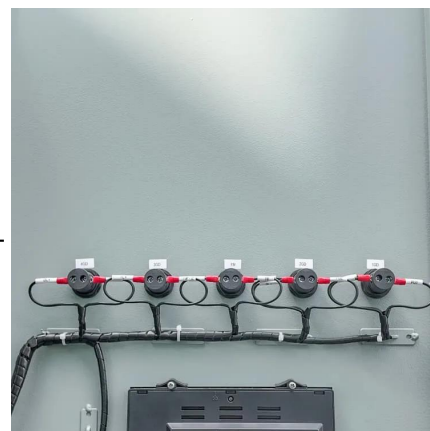
## What Are the Key Considerations for Telecom Batteries in Base Stations?

Telecom batteries for base stations are backup power systems that ensure uninterrupted connectivity during grid outages. Typically using valve-regulated lead-acid (VRLA) or lithium ...



## [Telecom Base Station Backup Power Solution: Design Guide ...](#)

Jun 5, 2025 · Discover the 48V 100Ah LiFePO<sub>4</sub> battery pack for telecom base stations: safe, long-lasting, and eco-friendly. Optimize reliability with our design guide.



## How does a Battery Storage System Station connect to the power ...

Dec 1, 2025 · Benefits of Connecting a Battery Storage System Station to the Power Grid  
Connecting a battery storage system station to the power grid offers several benefits, both for ...

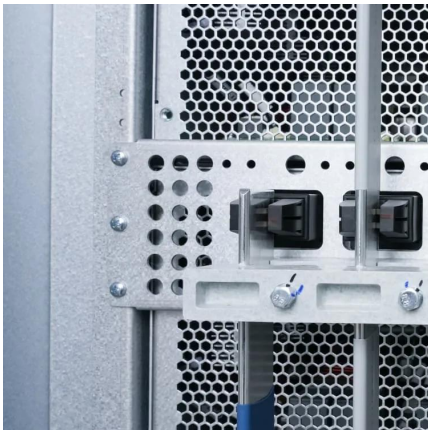




## [How about base station energy storage](#)

...

Apr 7, 2024 · How about base station energy storage batteries 1. Base station energy storage batteries play a critical role in enhancing efficiency ...



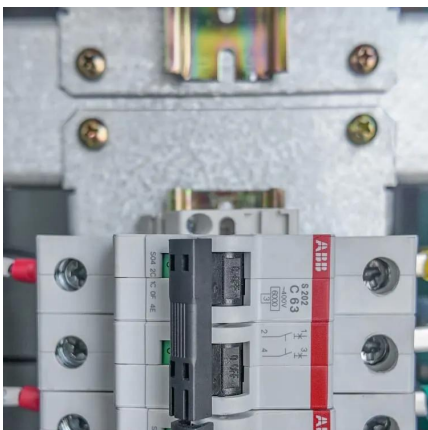
## [Base Station Energy Storage Battery Systems: Powering ...](#)

Why Are Base Stations Struggling with Power Reliability? You know, over 38% of cellular network outages globally stem from unstable grid power--that's according to the 2024 Global Telecom ...

## [How the Base battery works: A complete](#)

...

3 days ago · Learn how Base's home battery system works, from grid connectivity to outage protection. Discover how our intelligent software ...



## [How the Base battery works: A complete guide to grid ...](#)

3 days ago · Learn how Base's home battery system works, from grid connectivity to outage protection. Discover how our intelligent software optimizes your home's energy use and ...



## Overview of Telecom Base Station Batteries

Definition Telecom base station battery is a kind of energy storage equipment dedicatedly designed to provide backup power for telecom base stations, applied to supply continuous and ...

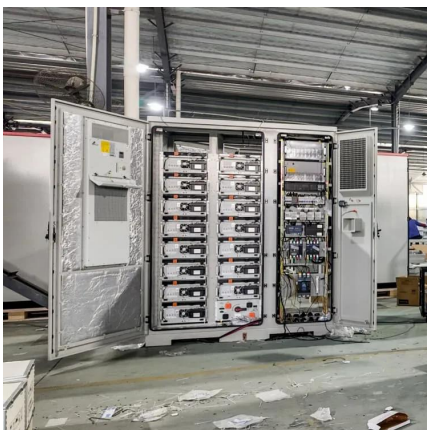


## How about base station energy storage batteries , NenPower

Apr 7, 2024 · How about base station energy storage batteries 1. Base station energy storage batteries play a critical role in enhancing efficiency and reliability in telecommunication ...

## How does a Battery Storage System Station ...

Dec 1, 2025 · Benefits of Connecting a Battery Storage System Station to the Power Grid  
Connecting a battery storage system station to the power grid ...



## Revolutionising Connectivity with Reliable Base Station ...

Jun 12, 2025 · Radio transmitters and receivers  
Signal processing units Power electronics Cooling systems Backup batteries or hybrid power solutions Base station energy storage refers to ...



## Contact Us

---

For technical specifications, project proposals, or partnership inquiries, please visit:  
<https://meble-decorator.pl>

### Scan QR Code for More Information



<https://meble-decorator.pl>