

Does the communication solar container lithium battery pack need to be discharged before installation





Overview

What should you avoid when shipping lithium batteries?

Avoid exposing batteries to direct sunlight, high heat, or freezing temperatures, which can affect battery performance and safety. Segregation: When transporting lithium battery packs in bulk, separate individual batteries or battery packs to prevent physical contact and potential short-circuiting.

How to transport lithium batteries safely?

Here's a comprehensive guide on how to transport lithium batteries safely: 1. Understanding Regulations and Guidelines Understand Regulations: Familiarize yourself with international and local regulations governing lithium battery transport. Regulations may vary based on transportation mode (by air, road, sea) and quantity of batteries.

How should a lithium battery pack be shipped?

Typically, lithium battery packs should be shipped at a state of charge about 30% to minimize the risk of thermal runaway. Terminal Protection: Cover battery terminals with insulating tape or use terminal caps to prevent accidental short-circuiting. 4. Handling and Storage.

What is a state of charge (SOC) for lithium ion batteries?

State of Charge (SoC): Verify and adjust the state of charge (SoC) of lithium-ion batteries as required by transport regulations. Typically, lithium battery packs should be shipped at a state of charge about 30% to minimize the risk of thermal runaway.



Does the communication solar container lithium battery pack need t



[How to Transport Lithium Batteries Safely - Expert Tips](#)

Dec 1, 2025 · Discover Saphiion's expert tips on how to transport lithium batteries safely. Secure your custom lithium battery packs with our safe transport tips.

[Why lithium ion battery need ...](#)

Jan 16, 2025 · In the past, when setting up solar systems or electric vehicles, gel or AGM batteries were commonly used. However, due to ...



[HOW BATTERY COMMUNICATION PROTOCOLS ARE DRIVING SMARTER](#)

How long does it take to customize a lithium battery pack Under normal conditions, it takes about 15 days for Li/SOCI2 battery, Li-MnO2 battery, flexible-pack batteries and lithium-polymer ...

[COMPREHENSIVE GUIDE TO LITHIUM BATTERY CELL](#)

Lithium battery pack for communication In order to meet the needs of the communications industry, there are two important types of lithium iron phosphate batteries, 12V and 48V ...



Does the communication lithium battery pack need to be discharged

Do lithium batteries need to be fully discharged before the first charge? All types of lithium batteries are technically a more reliable battery technology than their predecessors, like lead ...



[How to Transport Lithium Batteries Safely - ...](#)

Dec 1, 2025 · Discover Saphiion's expert tips on how to transport lithium batteries safely. Secure your custom lithium battery packs with our safe ...



[LiFePO4 Battery System for Households](#)

May 15, 2025 · Lithium battery pack is not same as lead-acid battery, so for the devices which you connect with the battery pack for charging or discharging, such as inverters, MPPT charger ...





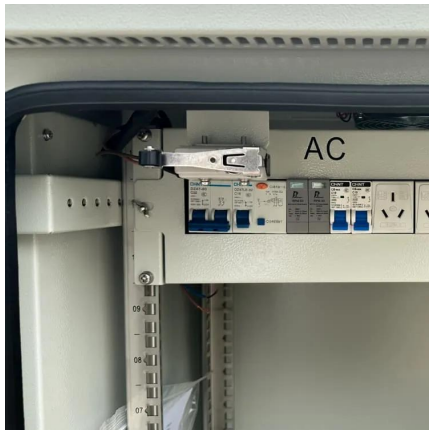
Why lithium ion battery need communications

Jan 16, 2025 · In the past, when setting up solar systems or electric vehicles, gel or AGM batteries were commonly used. However, due to advancements in technology, lithium-ion and LiFePO4 ...



Power Up Right: Do Solar Batteries Need to Be Charged Before ...

May 30, 2025 · In Summary Yes, solar batteries, particularly modern lithium-ion types, generally need to be properly and often fully charged before being put into regular, demanding use. ...



358-010286-06

May 20, 2025 · Special Attention: Due to the built-in protection board of the lithium battery pack is with over-discharge protection function, it is strongly recommended to stop using the load ...



The Complete Guide to Li-ion Battery Pack Communication ...

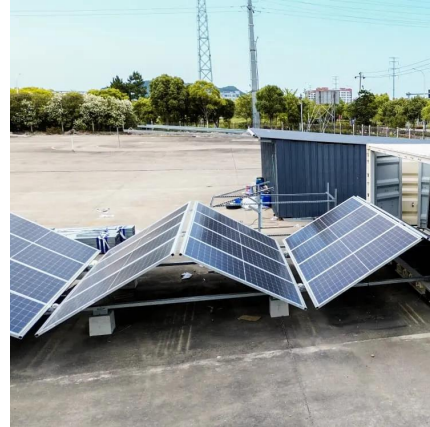
Jun 16, 2025 · In the era of smart devices and new energy, lithium battery packs are no longer silent energy containers but intelligent units capable of real-time "reporting" status and ...





WHAT YOU NEED TO KNOW ABOUT TRANSPORTING LITHIUM BATTERIES

The transition to lithium batteries in telecom base stations is accelerated by the urgent need for higher energy density and longer operational lifespans. ****5G network expansion**** demands ...



Contact Us

For technical specifications, project proposals, or partnership inquiries, please visit:
<https://meble-decorator.pl>

Scan QR Code for More Information



<https://meble-decorator.pl>