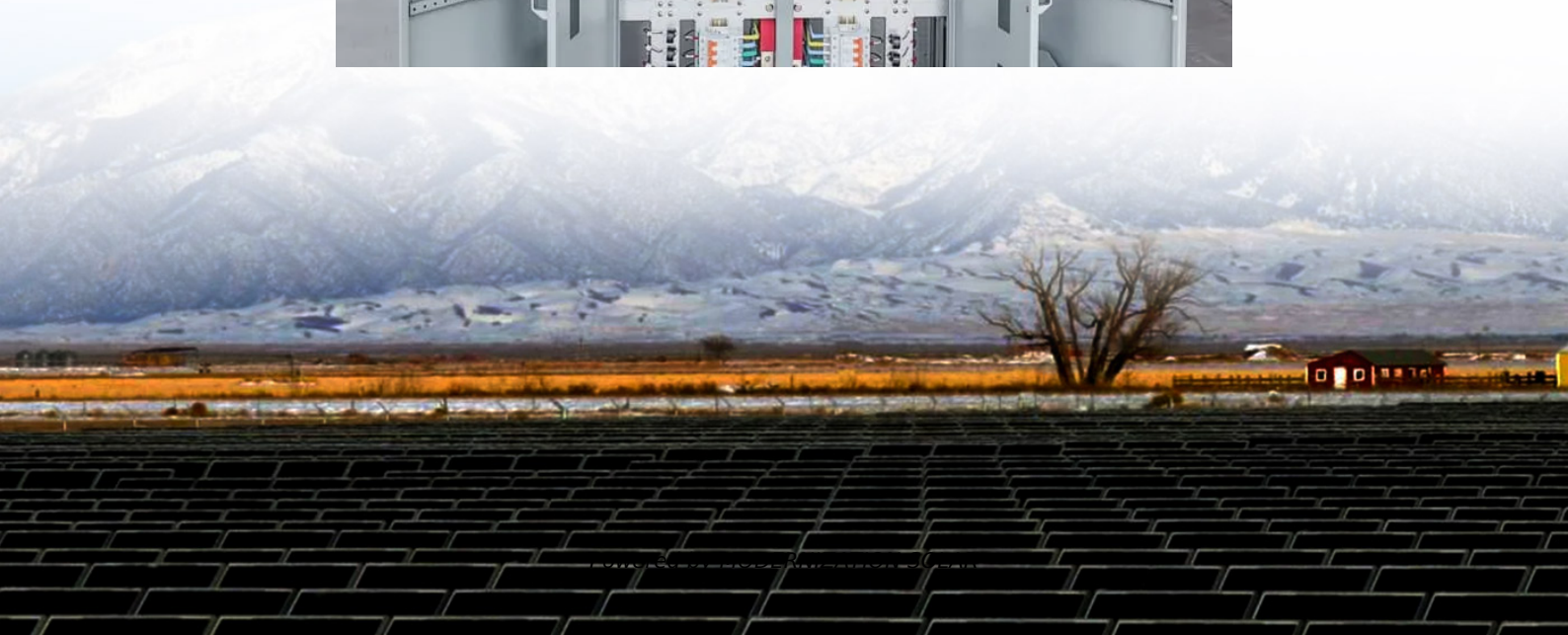


Each base station requires a battery





Overview

Which battery is best for telecom base station backup power?

Among various battery technologies, Lithium Iron Phosphate (LiFePO₄) batteries stand out as the ideal choice for telecom base station backup power due to their high safety, long lifespan, and excellent thermal stability.

What makes a telecom battery pack compatible with a base station?

Compatibility and Installation Voltage Compatibility: 48V is the standard voltage for telecom base stations, so the battery pack's output voltage must align with base station equipment requirements. Modular Design: A modular structure simplifies installation, maintenance, and scalability.

How do I choose a base station?

Key Factors: Power Consumption: Determine the base station's load (in watts). Backup Duration: Identify the required backup time (hours). Battery Voltage: Select the correct voltage based on system design. Efficiency & Discharge Rate: Consider battery efficiency and discharge characteristics.

Do I need a base station?

Yes, you do need a pair of base stations to get positional tracking of the headset, even if your just seated in front of your desk. Originally posted by SCSI-Terminator: Yes, you do need a pair of base stations to get positional tracking of the headset, even if your just seated in front of your desk.



Each base station requires a battery

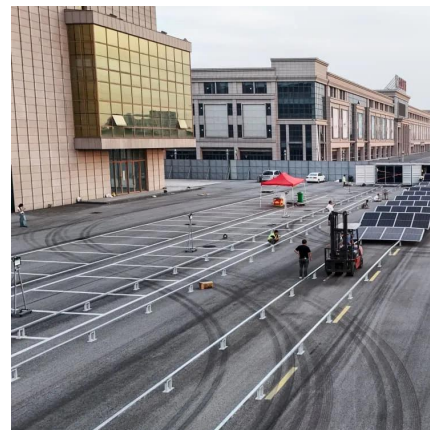


How to Determine the Right Battery Capacity for Telecom Base Stations

Mar 10, 2025 · Example: If a base station consumes 500W and needs 4 hours of backup at 48V, the required capacity is:
 $500W \times 4h / 48V = 41.67Ah$ Choosing a battery with a slightly higher ...

Base Station Energy Storage Battery Systems: Powering ...

How Battery Storage Systems Solve the Base Station Dilemma Modern base station energy storage battery systems combine lithium-ion technology with smart energy management.



What Are the Key Considerations for Telecom Batteries in Base Stations?

Telecom batteries for base stations are backup power systems that ensure uninterrupted connectivity during grid outages. Typically using valve-regulated lead-acid (VRLA) or lithium ...



Overview of Telecom Base Station Batteries

Definition Telecom base station battery is a kind of energy storage equipment dedicatedly designed to provide backup power for telecom base stations, applied to supply continuous and



...



Communication Base Station Battery Disposal , Huijue Group ...

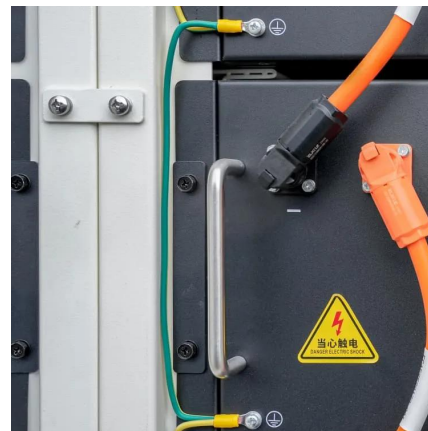
The Silent Crisis in 5G Expansion As global 5G infrastructure grows by 19% annually, communication base station battery disposal emerges as a critical yet overlooked challenge.

...



What is the purpose of batteries at telecom base stations?

Nov 7, 2025 · Among the many types of batteries, why can lead-acid batteries become the first choice for telecom base stations? This is mainly due to its following advantages: High ...



What is the purpose of batteries at telecom ...

Nov 7, 2025 · Among the many types of batteries, why can lead-acid batteries become the first choice for telecom base stations? This is mainly ...





[Ultimate Guide to Base Station Power Selection: Lithium vs.](#)

Nov 17, 2025 · The key is to align the base station's environment, power demand, O& M capability, and budget with the strengths of each battery type, ultimately achieving stable power supply, ...

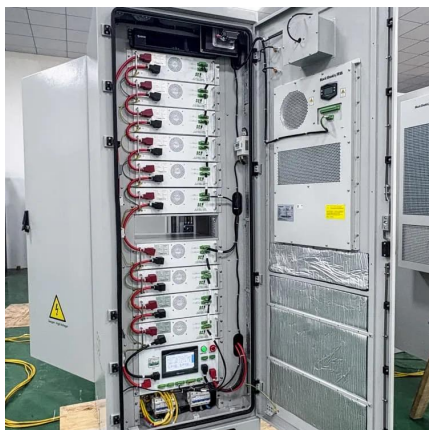


[Telecom Base Station Backup Power Solution: Design Guide ...](#)

Jun 5, 2025 · Discover the 48V 100Ah LiFePO4 battery pack for telecom base stations: safe, long-lasting, and eco-friendly. Optimize reliability with our design guide.

[Telecom Base Station Backup Power Solution: ...](#)

Jun 5, 2025 · Discover the 48V 100Ah LiFePO4 battery pack for telecom base stations: safe, long-lasting, and eco-friendly. Optimize reliability with ...



[How much energy storage battery is used in base stations?](#)

Aug 25, 2024 · The market offers various battery technologies, each possessing unique attributes influencing their suitability for base stations. Lithium-ion batteries are on the forefront due to ...



Overview of Telecom Base Station Batteries

Definition Telecom base station battery is a kind of energy storage equipment dedicatedly designed to provide backup power for telecom base stations, ...

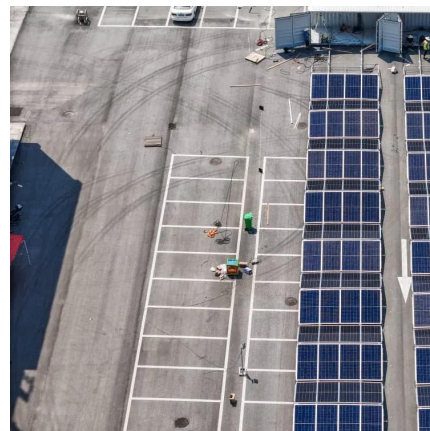


UPS Batteries in Telecom Base Stations - ...

Mar 17, 2025 · This article delves deep into the role, technology, maintenance, and future trends of UPS batteries in telecom base stations, ...

UPS Batteries in Telecom Base Stations - leagend

Mar 17, 2025 · This article delves deep into the role, technology, maintenance, and future trends of UPS batteries in telecom base stations, offering a detailed exploration of how these systems ...



How to Determine the Right Battery Capacity ...

Mar 10, 2025 · Example: If a base station consumes 500W and needs 4 hours of backup at 48V, the required capacity is:
 $500W \times 4h / 48V = 41.67Ah$...



Contact Us

For technical specifications, project proposals, or partnership inquiries, please visit:
<https://meble-decorator.pl>

Scan QR Code for More Information



<https://meble-decorator.pl>