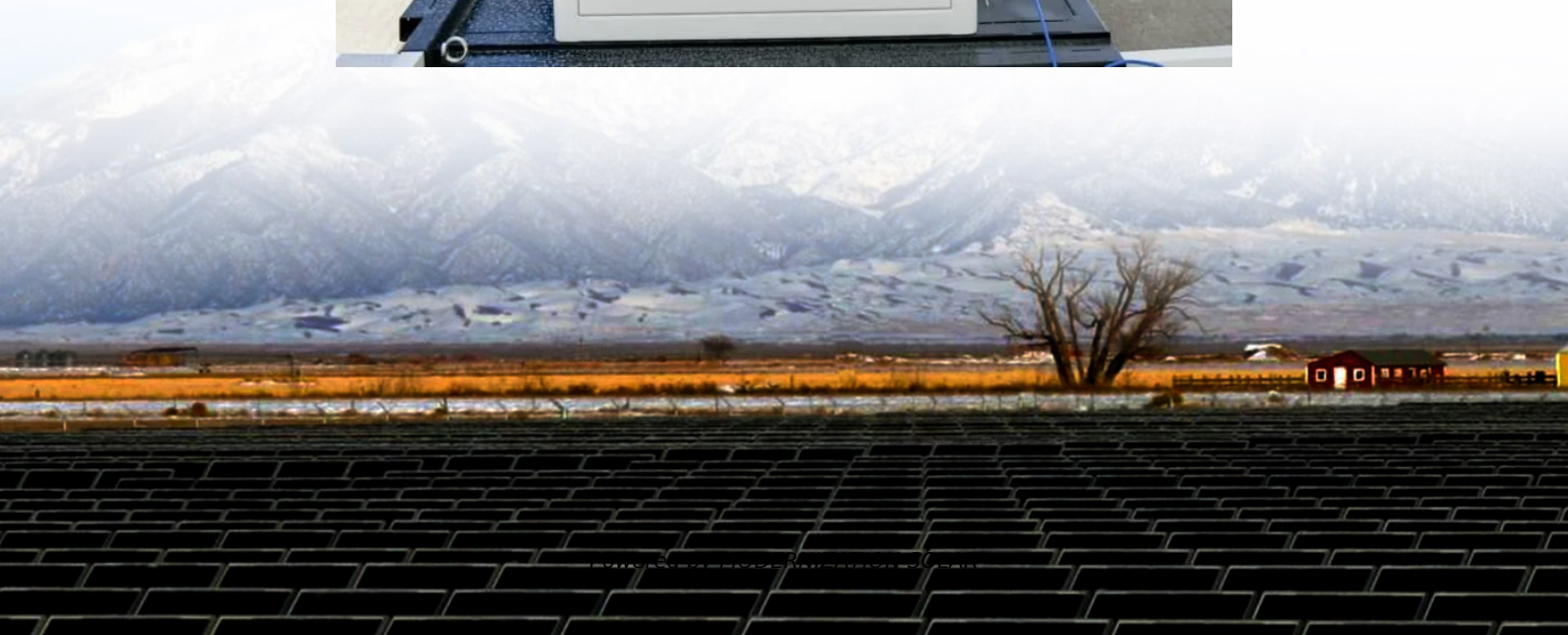


Flywheel energy storage is a power type energy storage





Overview

What is flywheel energy storage?

Policies and ethics Flywheel energy storage stores electrical energy in the form of mechanical energy in a high-speed rotating rotor. The core technology is the rotor material, support bearing, and electromechanical control system. This chapter mainly introduces the main structure of.

What is a flywheel energy storage system (fess)?

The operation of the electricity network has grown more complex due to the increased adoption of renewable energy resources, such as wind and solar power. Using energy storage technology can improve the stability and quality of the power grid. One such technology is flywheel energy storage systems (FESSs).

Do power utilities need a flywheel storage system?

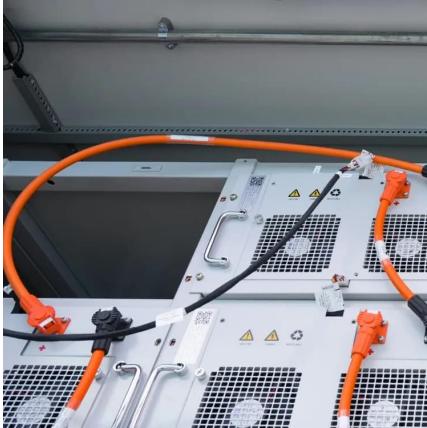
Power utilities need innovative ways to store renewable wind and solar energy, during low demand periods, so they can release it after sunset when demand is high. Several innovative power utilities already use flywheel storage systems to maintain power grid frequency. Renewable energy is knocking on flywheel energy's door.

Can a flywheel energy storage system maintain power grid frequency?

Several innovative power utilities already use flywheel storage systems to maintain power grid frequency. Renewable energy is knocking on flywheel energy's door. The system can respond instantly, unlike battery storage. However on the downside, flywheel energy storage systems have low energy storage density per unit of weight and volume.



Flywheel energy storage is a power type energy storage



[How to stop flywheel from spinning without special tools?](#)

Nov 11, 2025 · How do I stop the flywheel from spinning while torquing the bolts? My repair manual says I should buy a special tool to do it, but I don't want to buy an expensive tool that ...

[Flywheel Energy Storage System Basics](#)

Aug 13, 2025 · A flywheel energy storage system is therefore functionally similar to a hydro power station, that stores gravitational energy in water. In that instance, an electric motor pumps ...



[What are the benefits of a lightweight flywheel and why ...](#)

Apr 20, 2016 · This previous question explains what a flywheel does and why it is needed. That explanation means that the flywheel needs a certain amount of mass to do its job. However, ...



engine

Sep 28, 2016 · A dual mass flywheel (or DMF) is a flywheel that is split into two halves (hence the name), with a spring or springs between them to dampen out sudden changes in torque and ...



[A Review of Flywheel Energy Storage System Technologies](#)

Sep 7, 2023 · The operation of the electricity network has grown more complex due to the increased adoption of renewable energy resources, such as wind and solar power. Using ...



[Flywheel Energy Storage System . SpringerLink](#)

Sep 4, 2025 · Flywheel energy storage stores electrical energy in the form of mechanical energy in a high-speed rotating rotor. The core technology is the rotor material, support bearing, and ...



[Flywheel Energy Storage -> Term](#)

Dec 1, 2025 · Flywheel Energy Storage Meaning -> A Flywheel Energy Storage system is a mechanical device that stores electricity as kinetic energy in a rapidly spinning rotor for fast ...





Flywheel Energy Storage -> Term

Dec 1, 2025 · Flywheel Energy Storage Meaning
-> A Flywheel Energy Storage system is a mechanical device that stores electricity as kinetic ...

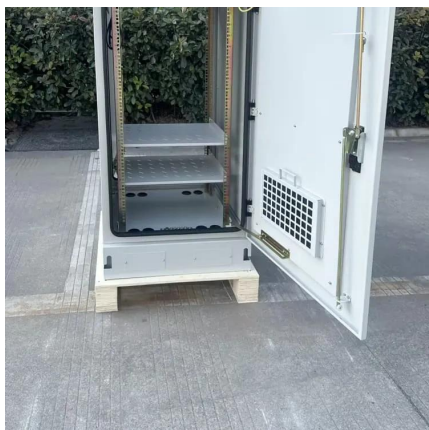


honda

Jun 14, 2019 · No grinding, no clicking, just spinning freely, but wouldn't engage flywheel. Hot another starter figuring this one was shot, preventing it from engaging the flywheel, and in the ...

A review of flywheel energy storage systems: state of the art ...

Feb 1, 2022 · Thanks to the unique advantages such as long life cycles, high power density, minimal environmental impact, and high power quality such as fast response and voltage ...



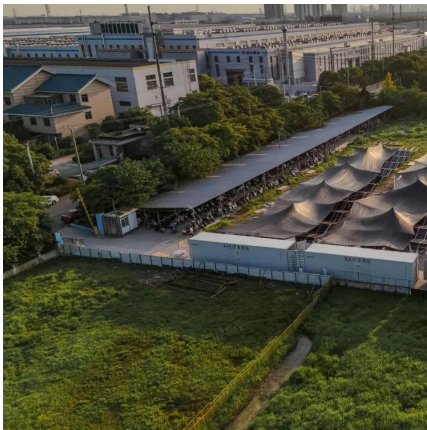
Flywheel Energy Storage Systems and Their Applications: A ...

Apr 1, 2024 · The flywheel energy storage system (FESS) offers a fast dynamic response, high power and energy densities, high efficiency, good reliability, long lifetime and low maintenance ...



Technology: Flywheel Energy Storage

Oct 30, 2024 · Summary of the storage process
Flywheel Energy Storage Systems (FESS) rely on a mechanical working principle: An electric motor is used to spin a rotor of high inertia up to ...



What does a flywheel do and what is it connected to?

Jan 12, 2016 · A flywheel serves four main purposes (in most vehicles): It provides mass for rotational inertia to keep the engine in motion. It is specifically weighted to provide balance for ...

If my starter is spinning but not engaging flywheel, what is ...

May 30, 2017 · The mechanism to engage the flywheel is faulty, probably the solenoid that activates it is either faulty (it moves its internal parts to make contact and so the motor spins, ...



What is a flywheel energy storage system? , NenPower

Aug 8, 2024 · A flywheel energy storage system is a mechanical device that utilizes rotational energy to store and release electricity. 1. It operates on the principle of inertia, which allows ...



Flywheel Energy Storage Systems (FESS)

Flywheel energy storage systems (FESS) use electric energy input which is stored in the form of kinetic energy. Kinetic energy can be described as ...



4.3/350 Chevy flywheel interchangeable?

Mar 5, 2019 · I have a 1997 S10 I'm thinking of doing a V8 swap with in the future does anyone know if the flywheel off of a 4.3 Chevy would work on a older 350 Since they're basically ...

Flywheel Energy Storage System Basics

Aug 13, 2025 · A flywheel energy storage system is therefore functionally similar to a hydro power station, that stores gravitational energy in water. ...



A review of flywheel energy storage systems: state of the ...

Mar 15, 2021 · This paper gives a review of the recent Energy storage Flywheel Renewable energy Battery Magnetic bearing developments in FESS technologies. Due to the highly ...



What is a flywheel energy storage system?

Aug 8, 2024 · A flywheel energy storage system is a mechanical device that utilizes rotational energy to store and release electricity. 1. It operates on ...



Flywheel Energy Storage Systems (FESS)

Flywheel energy storage systems (FESS) use electric energy input which is stored in the form of kinetic energy. Kinetic energy can be described as "energy of motion," in this case the motion ...

ford

Jun 21, 2019 · The starter motor has a small gear (the pinion gear) which sticks out on a shaft to engage the flywheel. if the pinion gear doesn't stick out far enough, it will spin but not turn the ...



How does a clutch work?

Jul 18, 2015 · I understand how a clutch can separate the flywheel from the clutch disk so that power is disconnected from the engine. When that happens, does the input shaft (along with ...



Does the flywheel really complete 33 revolutions per second ...

Feb 25, 2020 · I can't visualise an engine's flywheel turning 33 times per second when the car is set to 2,000 RPM - it seems excessive. Have I misunderstood RPM or is that actually how fast ...



Flywheel Energy Storage Systems and Their ...

Apr 1, 2024 · The flywheel energy storage system (FESS) offers a fast dynamic response, high power and energy densities, high efficiency, good ...

Contact Us

For technical specifications, project proposals, or partnership inquiries, please visit:
<https://meble-decorator.pl>

Scan QR Code for More Information



<https://meble-decorator.pl>