

# **GPRS base station communication**





## Overview

---

What is GPRS base station subsystem (BSS)?

Mobile Station (MS) comprises of users' hardware and software to interact with GPRS network. Base Station Subsystem (BSS) is responsible to maintain radio connection with MS and coding / decoding of voice. Every BSS of network is controlled by Base Station Controller (BSC). BSS is connected with MS via Um interface.

What is general packet radio service (GPRS)?

General Packet Radio Service, or GPRS, might sound like technical jargon, but it's actually a straightforward concept that plays a vital role in mobile communications. Introduced in the late 1990s, GPRS is a mobile data service that allows for wireless access to the internet, fundamentally changing how mobile phones and devices function.

What is GPRS architecture?

GPRS (General Packet Radio Service) is an expansion of GSM (Global System for Mobile Communications) networks that offer packet-switched data services. The GPRS architecture consists of different network components and interfaces that work together to provide data services. In this article, we will discuss everything about GPRS architecture.

Why are new mobile stations required to use GPRS services?

New Mobile Stations (MS) are required to use GPRS services because existing GSM phones do not handle the enhanced air interface or packet data. A variety of MS can exist, including a high-speed version of current phones to support high-speed data access, a new PDA device with an embedded GSM phone, and PC cards for laptop computers.



## GPRS base station communication

---



### GPRS architecture in wireless communication

Jul 23, 2025 · GPRS (General Packet Radio Service) is an expansion of GSM (Global System for Mobile Communications) networks that offer packet-switched data services. The GPRS ...

### Introduction to GPRS

Jul 25, 2018 · Base station controller (BSC) Mainly deals with the communication with BTS and MSC A BSC can control several BTS at the same time BSC is smart module in GSM that ...



### GPRS

Gprs Mobile Stations  
Gprs Base Station Subsystem  
Gprs Support Nodes  
Internal Backbone  
Routing Area  
The internal backbone is an IP based network used to carry packets between different GSNs. Tunnelling is used between SGSNs and GGSNs, so the internal backbone does not need any information about domains outside the GPRS network. Signalling from a GSN to a MSC, HLR or EIR is done using SS7. See more on [tutorialspoint telecomtrainer](#)

### gprs system architecture - Telecom Trainer

Dec 16, 2023 · Base Station Subsystem (BSS): The BSS comprises two main components: the Base Transceiver Station (BTS) and the Base



Station Controller (BSC). Base Transceiver ...

## GPRS architecture

May 19, 2025 · GPRS Architecture Components 1. Mobile Station (MS) The user's mobile device (phone, tablet). Communicates with the network using the Um interface (radio link). 2. Base ...



## GPRS

GPRS, which stands for General Packet Radio Service, is a packet-oriented mobile data standard on the 2G and 3G cellular communication network's global system for mobile communications ...

## [Understanding GPRS: A Simple Guide for Everyone](#)

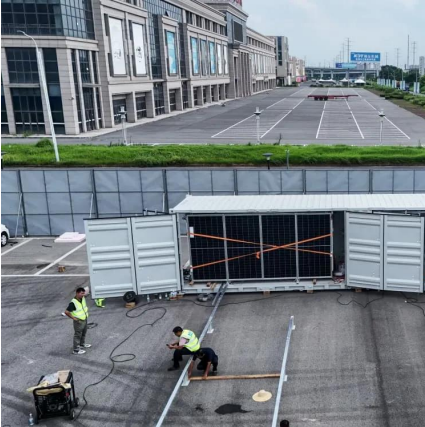
Jan 29, 2025 · Key Components Explained GPRS relies on several key components to function effectively, each playing a crucial role in its operation. The Mobile Station (MS) is the user ...



## gprs system architecture

Dec 16, 2023 · Base Station Subsystem (BSS): The BSS comprises two main components: the Base Transceiver Station (BTS) and the Base Station Controller (BSC). Base Transceiver ...





### The GPRS network (MS: Mobile Station, BTS: Base Transceiver Station)

Download scientific diagram , The GPRS network (MS: Mobile Station, BTS: Base Transceiver Station, BSC: Base Station Controller, EIR: Equipment Identity Register, MSC/VLR: Mobile ...



## **GPRS**

GPRS architecture works on the same procedure like GSM network, but, has additional entities that allow packet data transmission. This data network overlaps a second-generation GSM ...

## **GPRS - Mobile Computing**

Figure 1 - GPRS System Architecture Mobile Station (MS) comprises of users' hardware and software to interact with GPRS network. Base Station Subsystem (BSS) is responsible to ...





## GPRS - Mobile Computing

Figure 1 - GPRS System Architecture Mobile Station (MS) comprises of users' hardware and software to interact with GPRS network. Base ...

## Contact Us

---

For technical specifications, project proposals, or partnership inquiries, please visit:  
<https://meble-decorator.pl>

## Scan QR Code for More Information



<https://meble-decorator.pl>