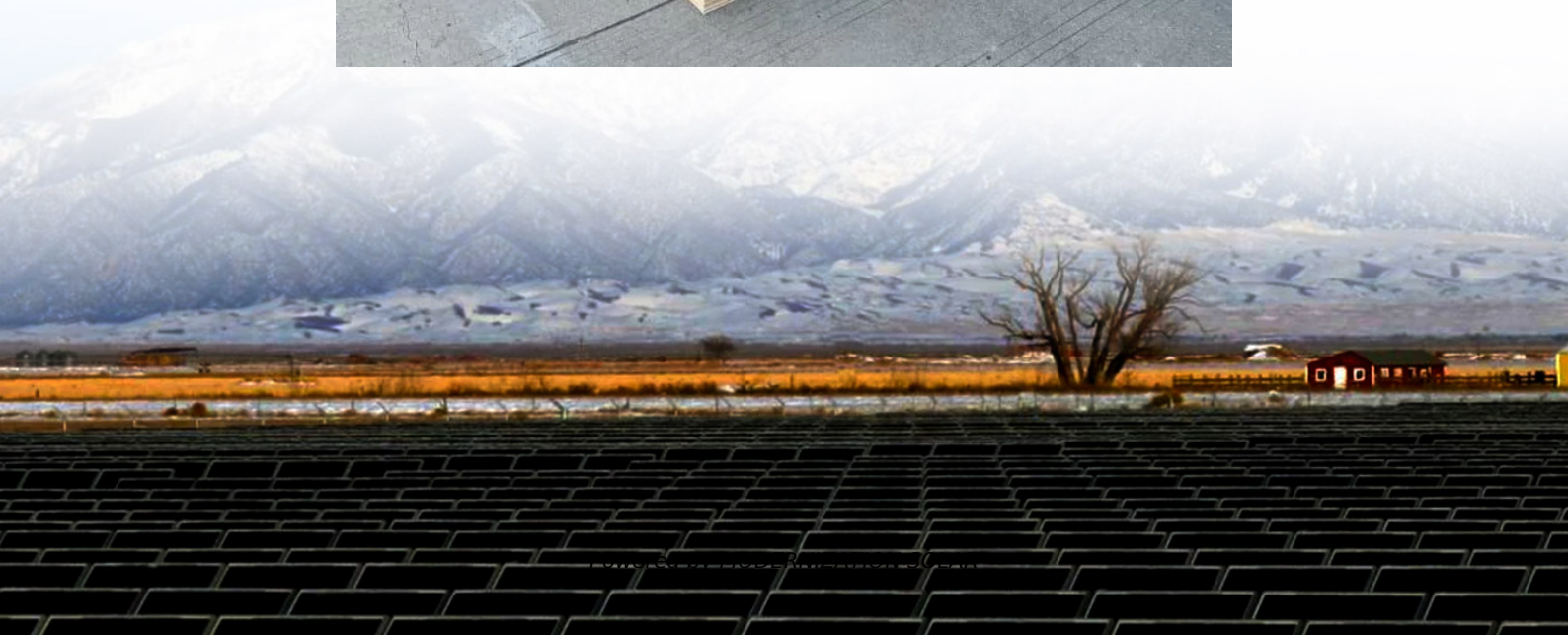


How big of an inverter can a 12v100ah power supply have





Overview

What size inverter for a 100Ah battery?

In general, for a 100ah battery, a 1000 watt pure sine wave inverter will be a good suit. It provides enough power to operate a wide range of household or camping appliances. Now, let's figure out how to choose the right inverter size for a 100ah battery, based on what you need. How to Choose the Right Size Inverter for a 100Ah Battery?

.

How many watts can a 12V inverter run?

Power Rating of the Inverter (Wattage) Inverters are rated by their continuous power output in watts (W). The right inverter size depends on how much power your appliances draw. Here are some general guidelines: A 12V 100Ah battery can reasonably power an inverter up to 1000W-1200W for short periods.

Do I need a 24V inverter for a 100Ah battery?

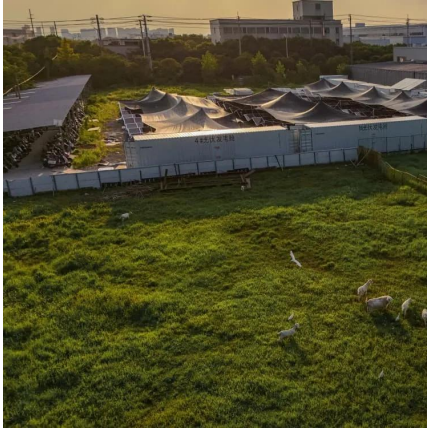
If you have a 12V battery, you will need a 12V inverter, while a 24V battery requires a 24V inverter. Make sure to verify the voltage of your battery before selecting an inverter. When picking an inverter for your 100ah battery, it's best to choose a pure sine wave inverter.

Can a 12V battery power an inverter?

Here are some general guidelines: A 12V 100Ah battery can reasonably power an inverter up to 1000W-1200W for short periods. For continuous loads, 500W-800W is more efficient and battery-friendly. 3. Inverter Efficiency and Battery Runtime No inverter is 100% efficient. Most are 85-95% efficient, which means some energy is lost as heat.



How big of an inverter can a 12v100ah power supply have

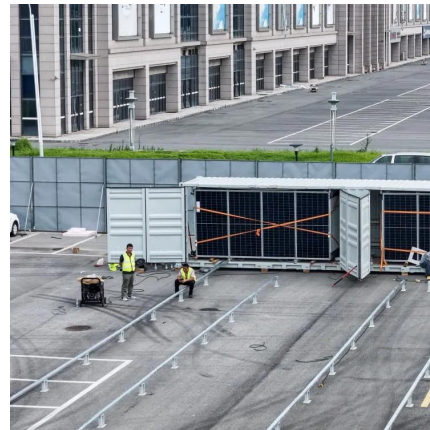


[How to Determine What Size Inverter You Can Run Off a ...](#)

Determining the appropriate size of an inverter that can be run off a 100Ah battery involves understanding both the power output of the inverter and the energy capacity of the battery. A ...

[What size inverter do you need for a 100ah battery?](#)

Oct 17, 2022 · The Surge Power rating on an inverter indicates the amount of electrical power (in Watts) that the inverter can supply for a brief moment. The Surge Power rating of an inverter is ...

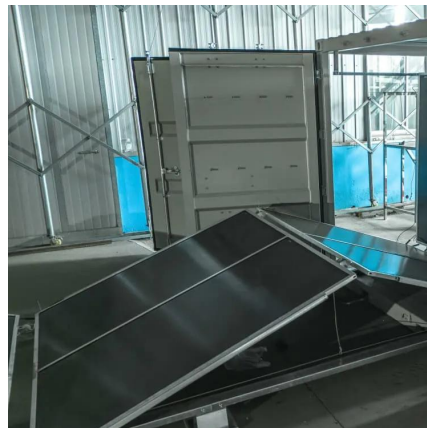


[Sizing the Right Inverter for 100ah Battery](#)

Jun 7, 2023 · In this guide, I will walk you through the process of sizing the right inverter for a 100ah battery along with an inverter size chart.

[Sizing the Right Inverter for 100ah Battery](#)

Jun 7, 2023 · In this guide, I will walk you through the process of sizing the right inverter for a 100ah battery along with an inverter size chart.



[What Size Inverter Do I Need for a 12V 100Ah Battery?](#)

Dec 19, 2023 · When determining what size inverter you need for a 12V 100Ah battery, it's essential to consider both your power requirements and the efficiency of your inverter system. ...



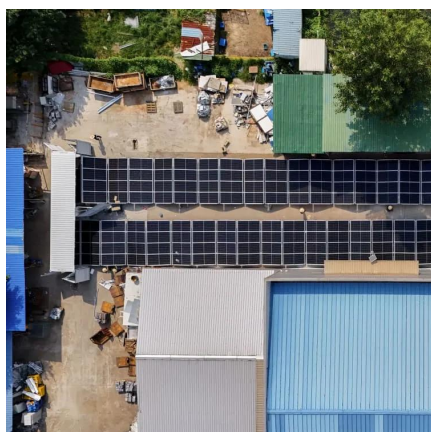
[What size inverter can I run off a 100Ah lithium battery?](#)

A 1000W inverter paired with a 100Ah lithium battery can run common household and power tools, including laptops, blenders, and small appliances. It is ideal for continuous, general ...



[What Size Inverter Can I Run Off a 100Ah Battery? A ...](#)

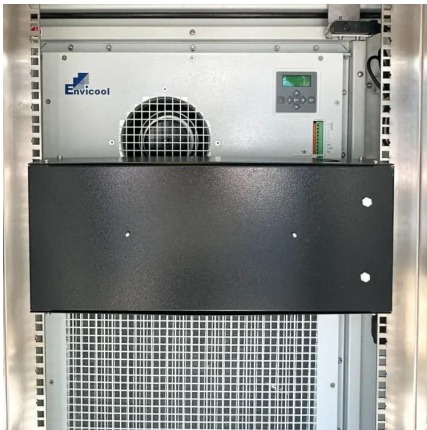
Aug 13, 2024 · This capacity influences how long an inverter can run appliances before needing a recharge. However, battery capacity alone doesn't dictate inverter size. The inverter converts ...





[What Size Inverter Do I Need for a 100Ah Battery?](#)

Apr 10, 2025 · A 100Ah battery typically supports an inverter size up to about 1000 watts for standard applications, balancing efficient runtime and battery health. Selecting the right ...

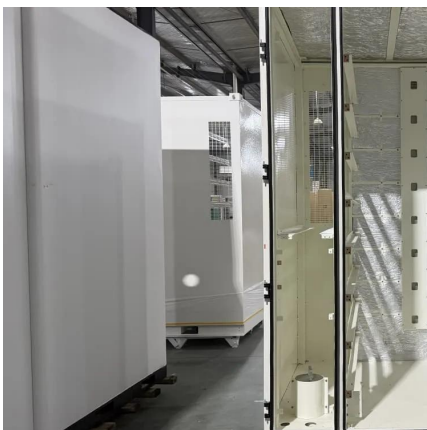


[Choose Inverter for 100Ah Battery- Everything You Need to ...](#)

Apr 15, 2025 · How much power does a 100Ah battery provide? How much power can a 100Ah battery provide? To fully utilize the potential of a 100Ah battery, you first need to clarify its ...

[What Size Inverter for 100Ah Battery? - MWXNE POWER](#)

May 23, 2025 · ? Can You Use Any Size Inverter with a 100Ah Battery? Technically, you can connect any inverter size to a 100Ah battery. But there are two important limitations: Battery ...



[What Inverter Size is Best for a 100Ah Battery?](#)

A 12V 100Ah battery can reasonably power an inverter up to 1000W-1200W for short periods. For continuous loads, 500W-800W is more efficient and battery-friendly.



Contact Us

For technical specifications, project proposals, or partnership inquiries, please visit:
<https://meble-decorator.pl>

Scan QR Code for More Information



<https://meble-decorator.pl>