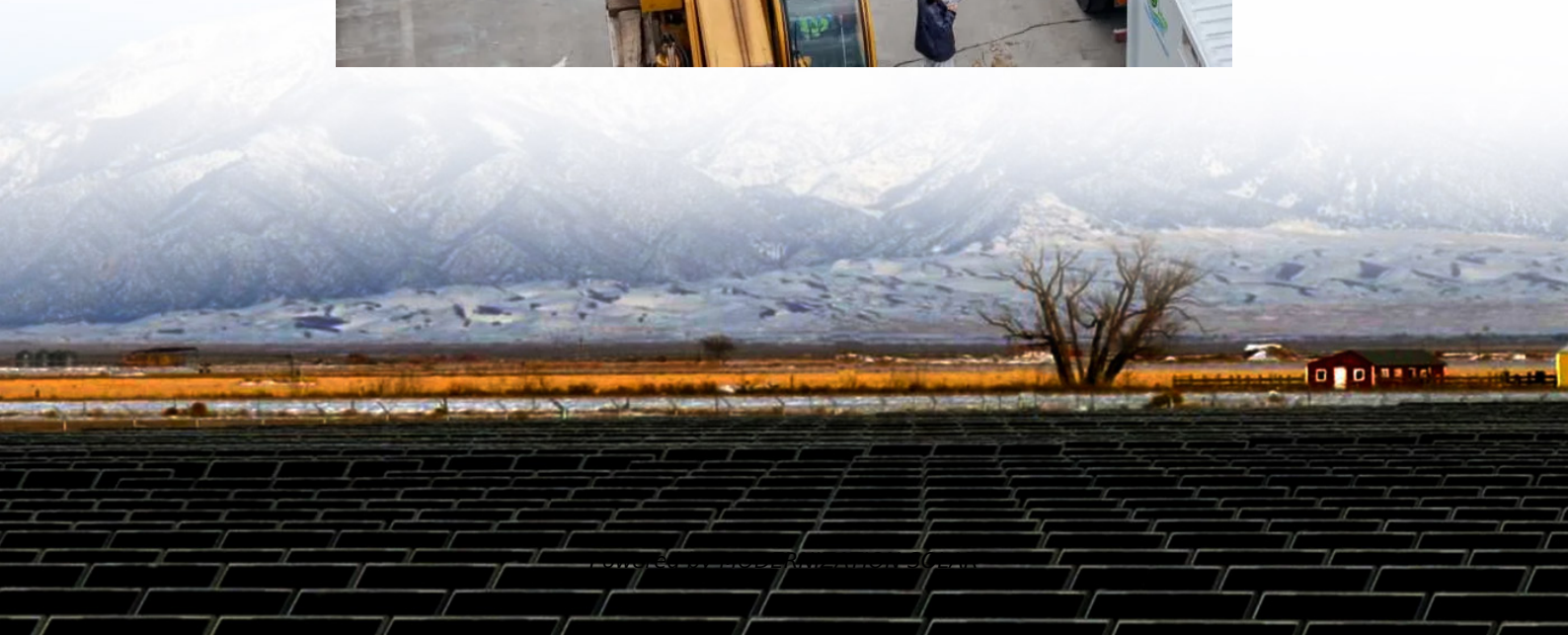


How big of an inverter does a typical family car support





Overview

How much inverter power can a car battery support?

There is a theoretical limit to the amount of inverter power that can be supported by an automotive battery. Theoretically, the maximum supported inverter power can be calculated by multiplying the battery capacity (Ah) by the battery voltage (V) multiplied by the discharge multiplier (C-rate).

Can a 12 volt car battery support a high power inverter?

Typically, a 12-volt car battery can support an inverter with a power range of about 150 watts to 1500 watts. Please note, however, that car batteries are not suitable for driving high power inverters for extended periods of time, which may cause damage to the battery.

How to choose a car power inverter?

Battery Size and Health – If your vehicle's battery is old or small, it might struggle to support larger car power inverters—especially when the engine isn't running. **Inverter Type** – Decide between pure sine wave and modified sine wave depending on what you're powering.

How big of an inverter can my car handle?

Let's learn how big of an inverter can my car handle. While you may not know the exact power of your car's electrical system, it's essential to understand that a single inverter can only connect to one car battery. If you have two 240v sockets on your car, you'll need an inverter rated at 500 watts.



How big of an inverter does a typical family car support

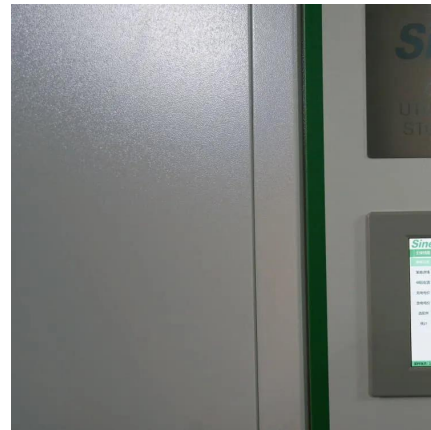


[What Size Power Inverter Is Needed for a ...](#)

Mar 4, 2025 · Imagine you're preparing for a power outage or setting up a solar system for your house. You know you need a power inverter, but the ...

[Inverter for Car: Everything You Need to Know Before You ...](#)

Jun 17, 2025 · When you're on the road and need a way to power your laptop, charge your phone, or even brew a cup of coffee, an inverter for car becomes more than just a handy gadget--it's ...



[What Size of Car Inverter do I Need? _ inverter](#)

Jun 14, 2024 · A car inverter is a convenient car power converter that can convert 12V DC power into 220V AC power, which is the same as the main power, for general electrical appliances. ...

[How Big of an Inverter Can My Car Battery ...](#)

Mar 26, 2025 · When considering connecting an inverter to your car battery, the first question we need to clarify is: how much power can your car ...



[How Big of an Inverter Can My Car Handle](#)

Jun 20, 2023 · Conclusion The size of the inverter that a car can handle is determined by the amount of power that the car's battery can provide. ...

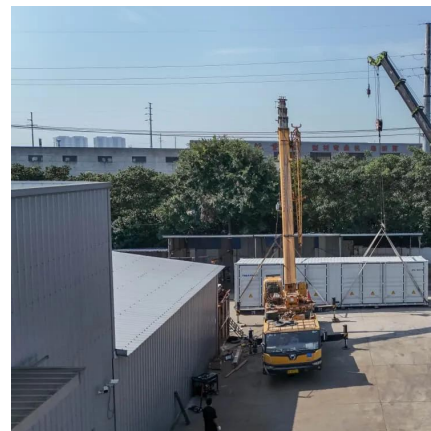


[How Big Of an Inverter Can My Car Handle , Expert Guide](#)

How to Determine The Inverter Size That Your Car Can handle?What's The Biggest Inverter My Car Can handle?Is Bigger Inverter Better?What Factors Affect The Size of An Inverter Required to Power A Car?Frequently Asked QuestionsConclusionInverter sizing does base on the load that the inverter must supply. This load can find on the inverters continuous power rating (measured in Watts) multiplied by 1.3 to 1.5. Let's say that I want a 1000 Watt continuous power inverter. The minimum inverter size that I would need would be 1,300 Watts. I could use a smaller invert...See more on automotiveex Rick's Free Auto Repair Advice

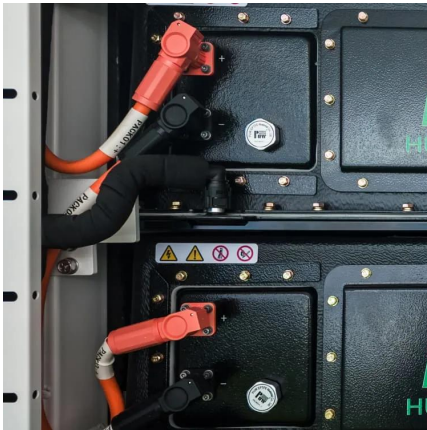
How To Choose The Right Power Inverter For ...

Sep 24, 2021 · Before you jump at the cheapest power inverter for your car, there are some things you need to know, like: o How much can



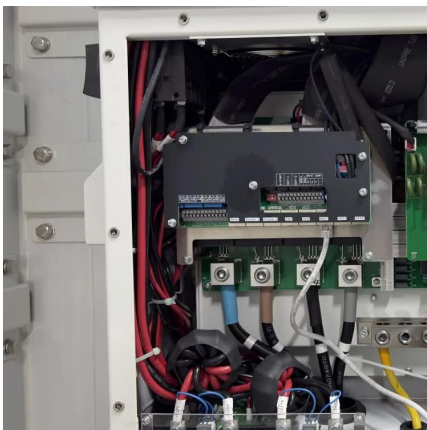


your ...



[What Size Inverter You Need \(Calculations + Battery\)](#)

Oct 6, 2022 · The size of the inverter required will be determined by the total wattage of the appliances you need to operate ...

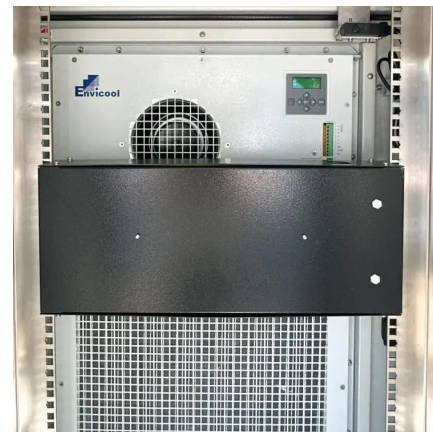


[How To Size A Solar Inverter in 3 Easy Steps](#)

After solar panels, the inverter is the most critical component of a solar system. But how big should your inverter be? In this guide, we share 3 ...

[How Big of an Inverter Can My Car Handle](#)

Jun 20, 2023 · Conclusion The size of the inverter that a car can handle is determined by the amount of power that the car's battery can provide. The typical 12 volt car battery can provide ...



[Choosing The Right Power Inverter For Your Car , ShunAuto](#)

May 3, 2025 · A power inverter is a device that converts the 12V DC power output of a car battery into a 120V AC output, allowing you to use electrical equipment that requires an AC power ...



[How Big of an Inverter Can My Car Handle: ...](#)

Apr 1, 2023 · How Big of an Inverter Can My Car Handle: Understanding Your Car's Electrical System To determine the maximum size of an ...



[What Can a Solar System Run: 3KW, 8kW, ...](#)

Jul 29, 2022 · What can a 3kW or 8kW solar system run in an average household? Discover the differences and make an informed decision for ...



[How Many Watt Inverter Do I Need?_ Click to ...](#)

Mar 20, 2025 · Introduction Selecting the accurate solar inverter size is extremely important if you want your electrical appliances should function ...





What size inverter can you run off a car battery?

Aug 11, 2025 · A typical 12-volt car battery can safely support an inverter ranging from about 150 watts up to 600 watts for regular use without harming the battery. While it is technically ...

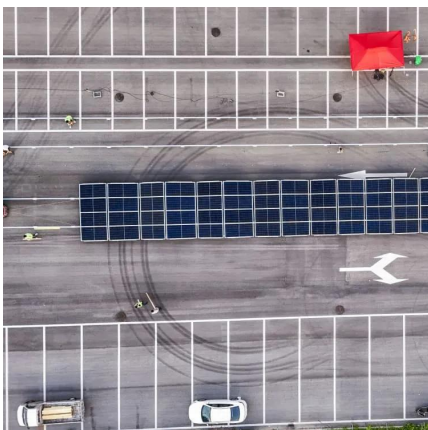


What size inverter do I need for a house or a car?

Oct 19, 2024 · Conclusion The 1000-watt power inverter is a very suitable device for home and car use, which can provide stable power support for a variety of electrical devices. Whether it ...

What Size Solar Inverter Do I Need? Experts ...

Jul 18, 2025 · A good inverter lasts 10-15 years and supports long-term efficiency What Is a Solar Inverter and Why Does Size Matter? Swap out ...



What Size of Car Inverter do I Need?

Jun 14, 2024 · A car inverter is a convenient car power converter that can convert 12V DC power into 220V AC power, which is the same as the ...



[How Big Of an Inverter Can My Car Handle , Expert Guide](#)

The inverter is the device that converts power from battery-powered electronics to the voltage used by your car (120 volts). The greater wattage an inverter can handle, the more devices ...



[How Big of an Inverter Can My Car Handle: Explained with ...](#)

Apr 1, 2023 · How Big of an Inverter Can My Car Handle: Understanding Your Car's Electrical System To determine the maximum size of an inverter that your car can handle, you need to ...

[How Big of an Inverter Can My Car Battery Handle?](#)

Mar 26, 2025 · When considering connecting an inverter to your car battery, the first question we need to clarify is: how much power can your car battery actually support an inverter? Typically, ...



[How To Choose The Right Power Inverter For Your Car](#)

Sep 24, 2021 · Before you jump at the cheapest power inverter for your car, there are some things you need to know, like: o How much can your power port handle o How many watts of power ...



Contact Us

For technical specifications, project proposals, or partnership inquiries, please visit:
<https://meble-decorator.pl>

Scan QR Code for More Information



<https://meble-decorator.pl>