

How many 36kw inverter distribution boxes are needed





Overview

How does the inverter size calculator work?

Our Inverter Size Calculator simplifies this task by accurately estimating the recommended inverter capacity based on your solar panel power and quantity. By inputting your panel's rated power and number of panels, the calculator produces a recommended inverter power range that aligns with 80-100% of your system's total DC capacity.

How many inverters do you need for a 12 kW solar system?

Inverter: one or two inverters of a combined 10 kW-15 kW A 12 kW solar installation in a farm near Berlin utilized a 10 kW inverter with excellent results—saving a couple of hundred dollars on initial cost and still registering peak output. 3. Equate Load Requirements, Not Panel Watts It's not solely about sunlight—actual usage matters, too.

What is a recommended inverter power range?

By inputting your panel's rated power and number of panels, the calculator produces a recommended inverter power range that aligns with 80-100% of your system's total DC capacity. This approach ensures that your inverter is neither under-sized—risking energy losses and performance issues—nor over-sized, which can lead to unnecessary costs.

What is a good inverter capacity for a grid-tied solar PV system?

A DC to AC ratio of 1.3 is preferred. System losses are estimated at 10%. With a DC to AC ratio of 1.3: In this example, an inverter rated at approximately 10.3 kW would be appropriate. Accurately calculating inverter capacity for a grid-tied solar PV system is essential for ensuring efficiency, reliability, and safety.



How many 36kw inverter distribution boxes are needed



[How Many Inverters Are Needed for 1MW Photovoltaic ...](#)

How Many Inverters Are Needed for 1MW Photovoltaic Power Generation? The Inverter-Panel Balancing Act When planning a 1MW solar installation, think of inverters as traffic controllers ...

[Retrofitting 600V Solar PV System](#)

Aug 27, 2025 · Evaluating String Combinations/Wiring Many centralized inverters utilize direct-current (DC) combiner boxes at the array to combine PV output strings and maximize PV ...

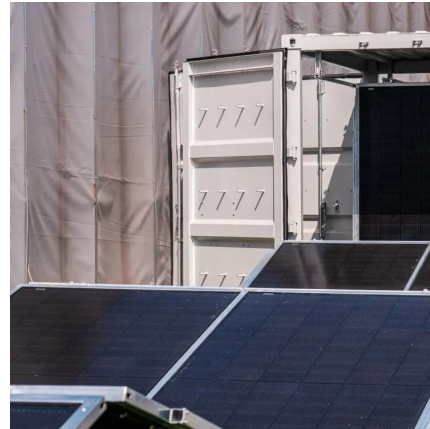


[What Determines How Many Solar Combiner Boxes You Need](#)

4 days ago · The number of solar combiner boxes you need depends on your solar strings, system layout, and each solar combiner box's input capacity.

[Understanding Distribution Panels: Functions, ...](#)

Feb 26, 2025 · Discover how distribution panels ensure safe, efficient power distribution in homes, offices & factories. Learn types, components & ...



MULTICLUSTER-BOXES FOR SUNNY ISLAND

Feb 3, 2025 · With the SMA Multiclus-ter-Boxes for Sunny Island battery inverters, both off-grid systems and battery-backup systems* can be configured easily and cost-efficiently. In regions

...



Inverter Amp Draw Calculator: Let's Simplify It ...

Our inverter amp draw calculator will help you determine the amps being pulled from your inverter to avoid depletion.



How Many Inverters Do I Need for Solar

...

May 22, 2025 · When installing solar panels, a key question is how many inverters are needed. The number depends on factors like solar array

...





[36kW, 1000Vdc String Inverters for North America](#)

Apr 21, 2025 · 36kW, 1000Vdc String Inverters for North America The 36kW medium-power CPS three-phase inverter has been designed for small commercial rooftop, ground mount, and ...



[Solar and Storage Sizing Calculator](#)

Nov 11, 2025 · The solar panel and storage sizing calculator allows you to input information about your lifestyle to help you decide on your solar panel and solar storage (batteries) requirements.

[How to Choose the Right Size Solar Inverter: Step-by-Step ...](#)

Jul 15, 2025 · Wondering what size solar inverter do I need for your solar system? This guide walks you through calculating inverter size based on panel capacity, power usage, and safety ...



[Inverter Size Calculator - self2solar](#)

Feb 20, 2025 · Optimize your solar system by calculating the ideal inverter size. Simply input panel specs for a recommended inverter power range ...



[Inverter Size Calculator - self2solar](#)

Feb 20, 2025 · Optimize your solar system by calculating the ideal inverter size. Simply input panel specs for a recommended inverter power range that ensures efficiency and safety today!



[How to Calculate Inverter Capacity for Grid ...](#)

Sep 23, 2024 · For grid-tied systems, the inverter capacity must be sufficient to meet the AC demand. However, it doesn't necessarily need to match ...

[How to Calculate Inverter Capacity for Grid-Tied Solar PV ...](#)

Sep 23, 2024 · For grid-tied systems, the inverter capacity must be sufficient to meet the AC demand. However, it doesn't necessarily need to match the exact load at all times since the ...



[How Many Inverters Per Solar Panel? Don't ...](#)

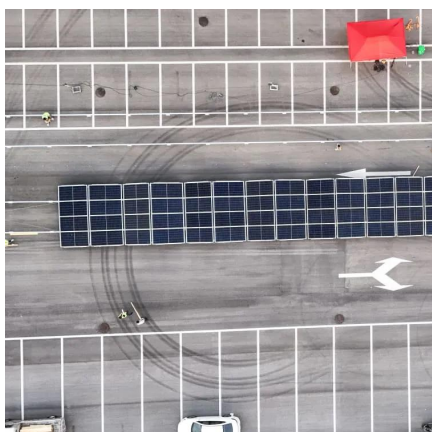
Apr 28, 2025 · When installing a solar panel system, understanding the role of inverters is crucial. Solar inverters convert the DC electricity from your ...



[Connecting Inverter to Distribution Box:](#)

...

2 days ago · In this article, you will find information about connecting inverter to distribution box: essential safety tips, step-by-step guidance, and ...



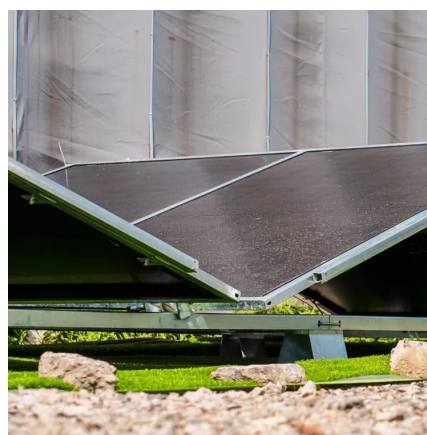
[8kW Solar System Information - Facts &](#)

...

8kW Solar System Information - Facts & Figures. Everything you ever wanted to know about this solar system size including production estimates.

[What is the typical capacity of an Inverter Combiner Box?](#)

Nov 28, 2025 · In conclusion, the typical capacity of an Inverter Combiner Box can vary widely depending on the application. From small 2 - string boxes for residential use to high - capacity, ...



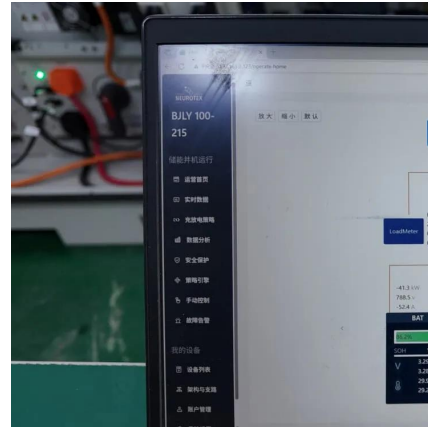
[How To Size Solar Combiner Box?](#)

A solar combiner box, also known as a combiner box, is a key component in a photovoltaic system. It is used to bring together the output current of ...



[How to Size AC Distribution Panels for Hybrid Inverters](#)

Sep 8, 2025 · Power up your design: size AC distribution panels for hybrid inverters with clear math, AIC checks, and tables. Hybrid inverter AC combiner panel sizing made practical.



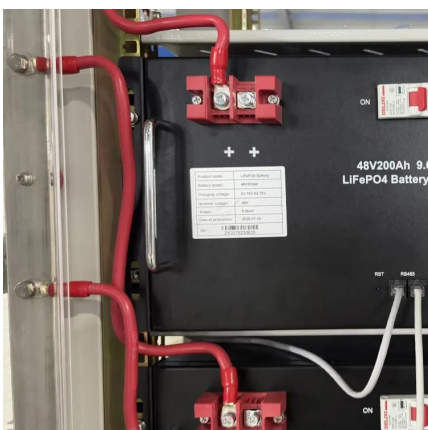
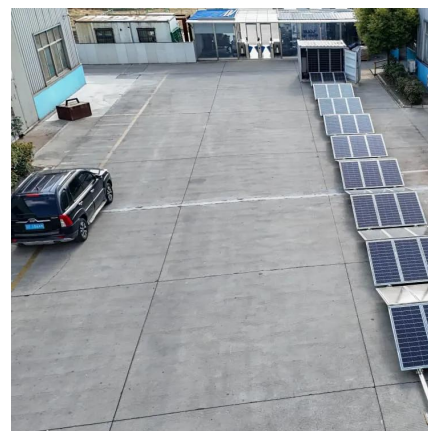
[SMA Multiclustor-Box 36 , Inverters , sun.store](#)

Based on proven technology, 2 to 12 three-phase clusters, each consisting of 3 Sunny Island inverters, can be connected in parallel. To simplify installation, all Multiclustor Boxes are ...

[HPL's AC DISTRIBUTION BOX \(ACDB\) for](#)

...

Aug 23, 2018 · The ACDB receives AC power from solar inverter and directs it to AC loads / LT Panel. ACDB is an important part of SPV system as it ...



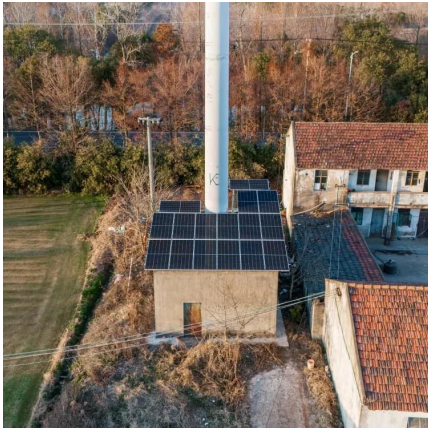
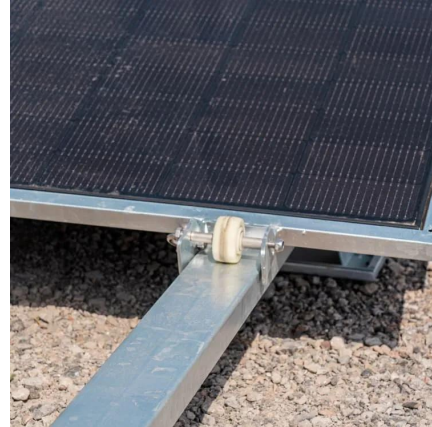
[Connecting Inverter to Distribution Box: Essential Safety Tips](#)

2 days ago · In this article, you will find information about connecting inverter to distribution box: essential safety tips, step-by-step guidance, and common mistakes that often lead to inverter ...



[How to Choose the Right Size Solar Inverter: ...](#)

Jul 15, 2025 · Wondering what size solar inverter do I need for your solar system? This guide walks you through calculating inverter size based on ...



[What Does a Solar Combiner Box Do?](#)

Jun 24, 2025 · Learn what a solar combiner box does, when you need one, and how it simplifies wiring while enhancing safety in solar installations. ...

Contact Us

For technical specifications, project proposals, or partnership inquiries, please visit:
<https://meble-decorator.pl>

Scan QR Code for More Information



<https://meble-decorator.pl>