

How many energy storage devices can be placed per acre





Overview

How much land is needed for 1 MW battery energy storage?

1. The land required for 1 MW of battery energy storage varies widely based on technology and implementation strategies, but can be summarized in these points: 1) The typical spatial footprint ranges from 0.5 to 1.5 acres depending on battery type. 2) **Factors influencing land use include cooling systems, safety setbacks, and regulations.

How is land allocated for battery energy storage systems?

Land allocation for battery energy storage systems is heavily influenced by local regulations. Each region has guidelines related to land use, zoning, fire safety, and environmental compliance. Regulatory frameworks define setbacks and safety zones near any energy storage installation.

How does a 1 MW battery energy storage system affect land use?

The actual land occupied by a 1 MW battery energy storage system can be influenced by numerous factors such as technology type, system design, and local regulations. Analyzing the interplay of these elements provides insights into practical land use considerations. One of the most prevalent forms of battery storage is lithium-ion technology.

How much land do solar panels need?

The world needs 50-70 million acres of solar panels to fully transition to renewables. A complete global transition to renewable energy would require between 50 to 70 million acres of land for solar panels. While this may sound like a lot, it is less than 0.5% of the world's total land area.



How many energy storage devices can be placed per acre



[Solar Panels: Powering Homes Per Acre Explained](#)

Mar 9, 2024 · Discover the impact of solar energy with our guide on how many homes would an acre of solar panels provide. Illuminate your understanding of clean power.

[How many acres of solar power generation , NenPower](#)

Jun 29, 2024 · Solar energy represents a significant force in the transition to renewable energy sources, yet the conversation surrounding land use cannot be understated. Urban landscapes ...



[Energy Storage Power Station Project Land Area: What You ...](#)

Aug 18, 2023 · In energy storage land allocation, it's "orientation, elevation, regulation." A recent Arizona project saved 18% space by arranging battery containers diagonally - proving that ...



[How Much Land Is Needed for 100% Renewable Energy?](#)

Explore the latest research on land use for 100% renewable energy and its impact on sustainability with our guide.



[How Much Land Do Energy Storage Power Stations Really ...](#)

As renewable energy capacity surges globally - solar and wind installations grew 18% year-over-year in Q1 2025 - the need for utility-scale energy storage has never been greater. But here's ...



[How much land does 1 MW of battery energy ...](#)

Aug 6, 2024 · 1. The land required for 1 MW of battery energy storage varies widely based on technology and implementation strategies, but can be ...



[Land Requirements for Utility-Scale PV: An](#)

Jan 28, 2022 · In other words, increasing the power (MW/acre) and energy (MWh/acre) density of utility-scale PV can at least partially offset the higher land costs likely to be incurred going ...





[How many energy storage boxes can be installed in one ...](#)

A single acre can hold as many as 2,000 solar panels. This shows the huge potential of solar energy. It means we can use land efficiently for making power from the sun. This knowledge is ...



How Many Homes Can 1 Acre of Solar Panels Supply: Solar Panel Power

Feb 7, 2025 · Discover how many homes can 1 acre of solar panels actually power based on panel efficiency, solar energy ...

[Optimal Storage Units Per Acre: Key Factors for Land Utilization](#)

May 18, 2025 · Different types of storage units (climate-controlled, drive-up, outdoor, self-storage, and warehouse) require various space allocations, affecting the total number of units per acre. ...



[Landowner Partnerships - Convergent Energy ...](#)

5 days ago · The space requirements depend on the size of the project; a good rule of thumb is 1,000 square feet per MWh of battery storage, and ...



[How Many Houses Fit on 1 Acre? Real Estate Insights](#)

Nov 19, 2024 · How Many Houses Can Fit on 1 Acre? The number of homes possible on an acre varies depending on several urban planning and regulatory factors. Local zoning laws set forth ...



[How Many Wind Turbines Can You Put Per Acre](#)

Oct 3, 2025 · Wind energy works on a simple concept: wind turbines or blades attached to a long and firm core, which move as per wind speed and strength. As these turbines rotate, they ...

[Landowner Partnerships - Convergent Energy and Power](#)

5 days ago · The space requirements depend on the size of the project; a good rule of thumb is 1,000 square feet per MWh of battery storage, and seven acres per MW of solar PV panels. By ...



Battery Storage

Oct 30, 2019 · Battery storage can also be co-located with solar PV. Here the same grid connection is used and during times of high production from the solar the batteries can be ...



Planting Grape Vines: How Many Are Needed ...

Nov 16, 2024 · The number of grape vines per acre also depends on the type of grape variety. Some varieties can produce an excess of 8-9 tons per ...



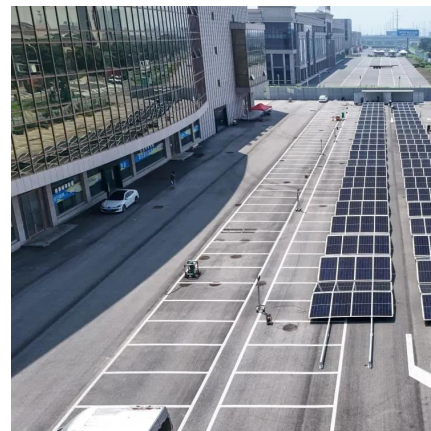
How much photovoltaic solar energy can be installed per acre?

Nov 3, 2024 · Solar energy installations per acre depend heavily on various influencing aspects, including land characteristics, technology, system design, and policies. As renewable energy ...



How much land does 1 MW of battery energy ...

Aug 6, 2024 · The land required for 1 MW of battery energy storage varies widely based on technology and implementation strategies, but can be ...



How Many Mobile Homes Per Acre Are Legally Allowed?

Aug 7, 2025 · Uncover the intricate legal and practical considerations dictating the maximum number of mobile homes allowed per acre on any given property.



What does an ideal Battery Energy Storage Site (BESS) look ...

May 15, 2024 · Land suitability The land requirement varies, BESS projects can be as small as two acres, or as large as 30 acres. Typically, BESS developers look for between two to 15 ...



Does My Land Qualify for Battery Storage?

Feb 29, 2024 · As the world moves towards renewable energy sources, battery storage is becoming an increasingly popular option for storing excess energy. This can be seen in the ...

How much land does 1 MW of battery energy storage occupy?

Aug 6, 2024 · The land required for 1 MW of battery energy storage varies widely based on technology and implementation strategies, but can be summarized in these points: 1) The ...



Maximize Your Yield: How Many Bee Hives ...

While there's no one-size-fits-all answer to either, we can examine some key factors to estimate the best ratio for how many bee hives per acre you ...



[Does My Land Qualify for Battery Storage?](#)

Feb 29, 2024 · As the world moves towards renewable energy sources, battery storage is becoming an increasingly popular option for storing ...



Contact Us

For technical specifications, project proposals, or partnership inquiries, please visit:
<https://meble-decorator.pl>

Scan QR Code for More Information



<https://meble-decorator.pl>