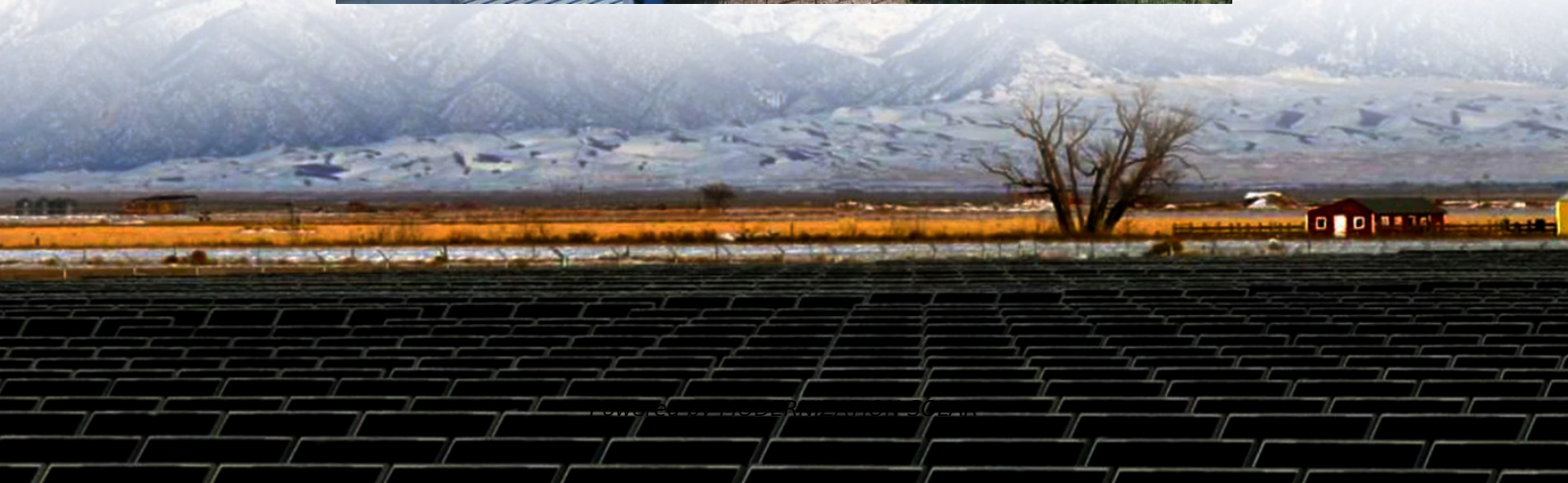


How many parts are used in the communication equipment of the Bamako base station





Overview

What are the components of a base station?

The base station will have one or more RF antennas installed to transmit and receive RF signals from other devices. The block diagram of a base station typically includes the following key components: Baseband Processor: The baseband processor too deals with different communication protocols and interfaces with mobile network infrastructure.

What equipment does a base station need?

Control Equipment: Base stations include control equipment that manages the communication protocols and coordinates the interaction between mobile devices and the network. This equipment ensures that data is routed correctly and efficiently. Power Supply: A reliable power supply is essential for the continuous operation of a base station.

What is a mobile base station?

Base Station generally refers to the “public mobile communication base station”, (abbr.: BS), the base station is used to provide signals to mobile phones. It usually consists of the following four parts: Antenna-Feeder System Responsible for signal transmission and reception, including antennas and feeders.

Where is a BBU located in a base station?

Usually BBUs are placed indoors (that is, in the equipment room). There are usually also rack power equipment and transmission equipment in the cabinet. BBU, RRU and Antenna Feeder are the core parts of the base station. Through the coordinated work of each part, the functions such as sending text messages and Internet communication are completed.



How many parts are used in the communication equipment of the B



Complete Guide to 5G Base Station Construction , Key Steps, Equipment

Nov 17, 2024 · Output: Supplies clean and stable DC power to crucial equipment. Battery Bank Backup Power: In the event of a power failure, battery banks act as silent guardians, providing ...

Base Stations

Jul 23, 2025 · The present-day tele-space is incomplete without the base stations as these constitute an important part of the modern-day scheme of wireless communications. They are ...



[Complete Guide to 5G Base Station ...](#)

Nov 17, 2024 · Output: Supplies clean and stable DC power to crucial equipment. Battery Bank Backup Power: In the event of a power failure, ...



[What is a Base Station in Telecommunications?](#)

A base station is a critical component in a telecommunications network. A fixed transceiver that acts as the central communication hub for one or more wireless mobile client devices.



What is Telecommunication Base Station , China Hop

Most people think that the towering iron tower is the entirety of the base station, but in fact, it is just the tower and antenna, just a component of the base station. In addition to these visible ...



Basic components of a 5G base station

The 5G base station is composed of a power supply system and communication equipment [4], in addition to some auxiliary equipment such as air conditioning and lighting.



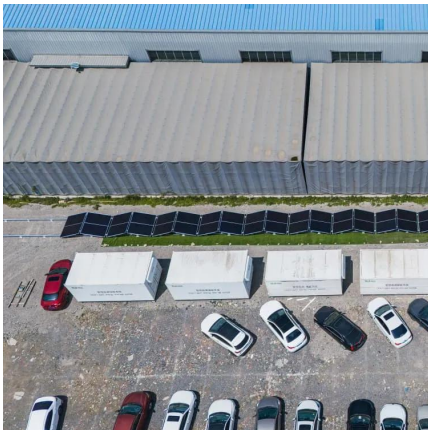
What Is A Base Station?

Apr 22, 2024 · A base station is an integral component of wireless communication networks, serving as a central point that manages the ...



What Is A Base Station?

Apr 22, 2024 · A base station is an integral component of wireless communication networks, serving as a central point that manages the transmission and reception of signals between ...



What is Base Station?

Nowadays, networking has become a crucial part of our daily lives. To implement network services for users, base station plays an essential role ...

What is Base Station?

Nowadays, networking has become a crucial part of our daily lives. To implement network services for users, base station plays an essential role to constitute a complete network ...



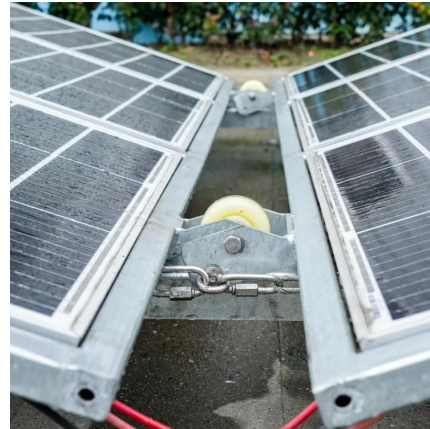
GSM

The BSS is composed of two parts: The BSS is composed of two parts: The Base Transceiver Station (BTS) The Base Station Controller (BSC) The BTS and the BSC communicate across ...



Basic components of a 5G base station

The 5G base station is composed of a power supply system and communication equipment [4], in addition to some auxiliary equipment ...

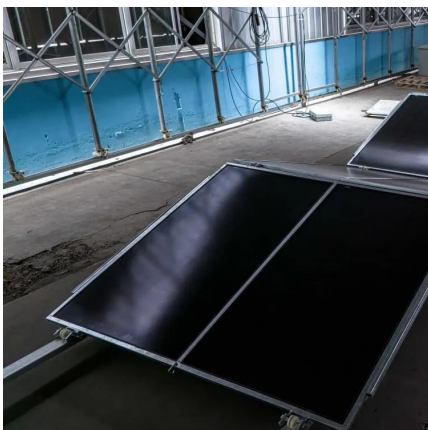
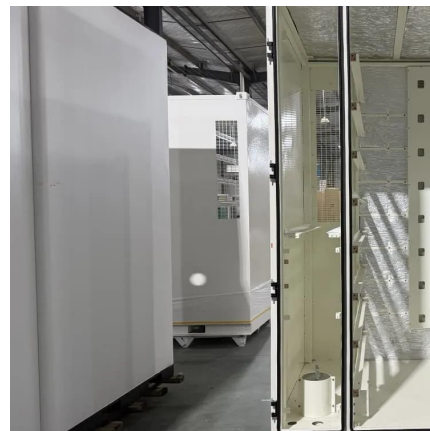


Introduction of base station and Remote Radio Unit

Jul 22, 2022 · Base Station, generally refers to the "public mobile communication base station", (abbr.: BS), the base station is used to provide signals to mobile phones. It usually consists of ...

What is a Base Station in ...

A base station is a critical component in a telecommunications network. A fixed transceiver that acts as the central communication hub for one or ...



The Base Station in Wireless Communications: The Key to ...

Nov 10, 2023 · Base station, also known as BTS (Base Transceiver Station), is a key device in wireless communication systems such as GSM. Equipped with an electromagnetic wave ...



Base Stations

Jul 23, 2025 · The present-day tele-space is incomplete without the base stations as these constitute an important part of the modern-day scheme ...



The Base Station in Wireless Communications: ...

Nov 10, 2023 · Base station, also known as BTS (Base Transceiver Station), is a key device in wireless communication systems such as GSM. ...

Contact Us

For technical specifications, project proposals, or partnership inquiries, please visit:
<https://meble-decorator.pl>

Scan QR Code for More Information



<https://meble-decorator.pl>