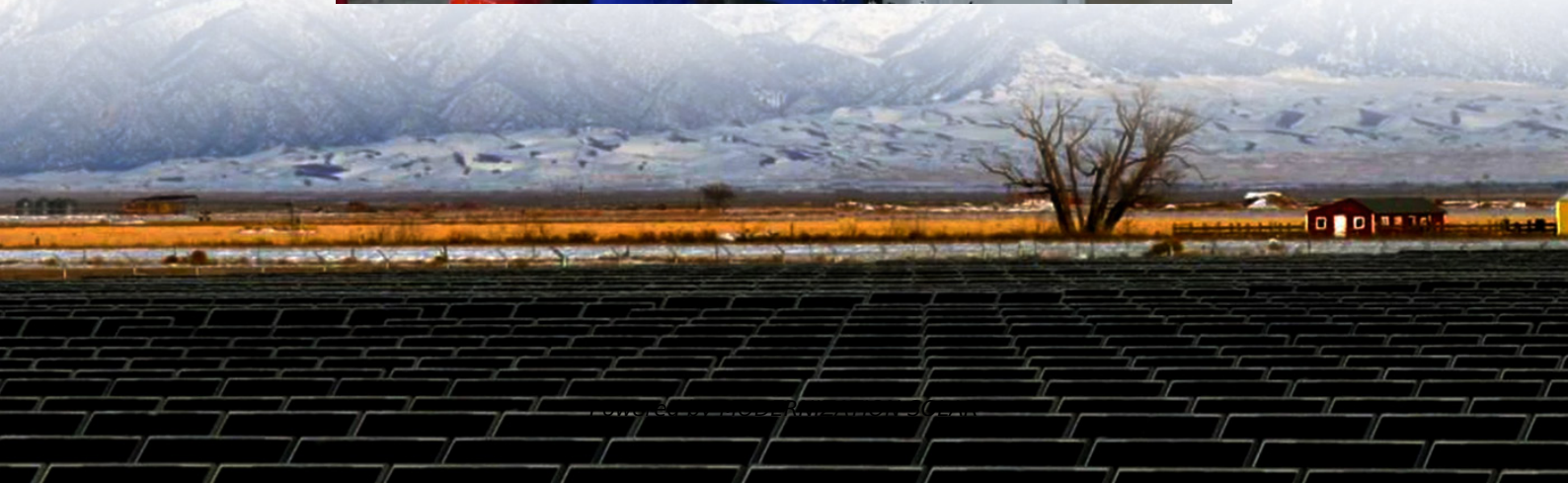


How many square meters are there for a 10 000-watt solar panel





Overview

What is solar panel watts per square meter (W/M)?

Solar panel watts per square meter (W/m) measures the power output of a solar panel based on its size. Compare solar panels to see which generates most electricity per square meter. A higher W/m value means a solar panel produces more power from a given area. This can help you determine how many solar panels you need for your energy needs.

How many square meters is a kilowatt solar panel system?

The area required for each kilowatt (kW) solar panel system is approximately 5 to 10 square meters, depending on the panel efficiency and wattage. 1. The effici.

How much space does a kilowatt solar panel system need?

The area required for each kilowatt (kW) solar panel system is approximately 5 to 10 square meters, depending on the panel efficiency and wattage. 1. The efficiency of the solar panels influences the space needed significantly, with higher efficiency panels requiring less area per unit of power generated. 2.

How much solar power is generated per square metre?

The amount of solar power generated per square metre varies based on the type of solar panel used. Here's a comparison: 1. Monocrystalline Solar Panels – Up to 22% efficiency, producing 220W per square metre. 2. Polycrystalline Solar Panels – Around 18% efficiency, generating 180W per square metre. 3.



How many square meters are there for a 10 000-watt solar panel



[Solar Panel Watts Per Square Meter Explained](#)

Learn how to measure solar panel efficiency using solar panel watts per square meter with this comprehensive guide.

[Solar Energy Per Square Meter: How Much ...](#)

Mar 2, 2025 · As the world increasingly shifts towards renewable energy, it's essential for homeowners and businesses to understand solar energy ...



[Total Area Required for Solar Panel ...](#)

Oct 10, 2025 · Calculate the total area needed for your solar panel installation quickly and accurately with our easy-to-use solar panel area ...

[Calculation of total area required for solar panel installation](#)

Mar 18, 2025 · Calculate the total solar panel installation area with precision for optimal design and efficient energy output.



[Total Area Required for Solar Panel Installation Calculator](#)

Oct 10, 2025 · Calculate the total area needed for your solar panel installation quickly and accurately with our easy-to-use solar panel area calculator.



[Solar Power per Square Meter Calculator](#)

Solar Panel Output CalculatorSolar Panels Kwh CalculatorSolar Panel Area Per KwWattage is the output of solar panelsthat is calculated by multiplying the volts by amps. Here, the amount of the force of the electricity is represented by volts. The aggregate amount of energy used is expressed in amps (amperes). Output ratings on most solar panels range between 250 watts to 400 watts.See more on energytheory solvebility

Solar Power Per Square Meter Calculator - Free Tool 2025

A typical solar panel produces 150-250 watts per square meter under standard test conditions (1,000 W/m² irradiance, 25°C). In real-world conditions, expect 120-200W/m² during peak sun

...



[Solar Energy Generation Per Square](#)



[Solar Energy Generation Per Square Metre: A ...](#)

Mar 19, 2025 · With the rising demand for renewable energy, solar panels for home have become a popular choice for homeowners looking to reduce ...



[Solar Power per Square Meter Calculator](#)

Nov 17, 2023 · The amount of sunlight received per square meter on the solar panels determines the output you will receive from the solar panel system. So, if you are planning to get a solar ...

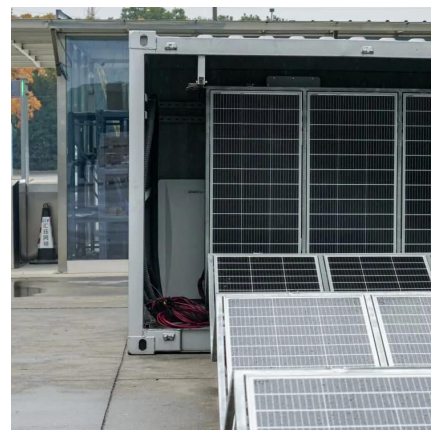
[Metre: A Complete Guide](#)

Mar 19, 2025 · With the rising demand for renewable energy, solar panels for home have become a popular choice for homeowners looking to reduce electricity bills and contribute to a ...



[Solar Power Per Square Meter Calculator](#)

A typical solar panel produces 150-250 watts per square meter under standard test conditions (1,000 W/m² irradiance, 25°C). In real-world conditions, expect 120-200W/m² during peak sun ...



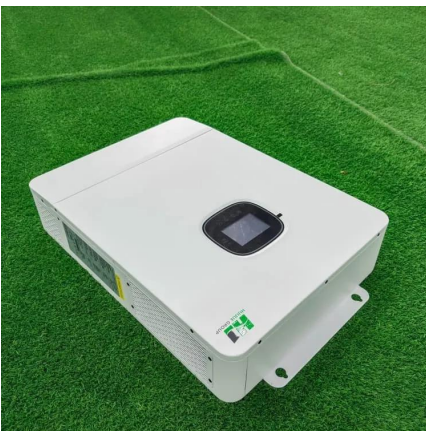


[How many square meters of space is required per kw solar panel?](#)

Oct 10, 2024 · The area required for each kilowatt (kW) solar panel system is approximately 5 to 10 square meters, depending on the panel efficiency and wattage. 1. The efficiency of the solar ...

[Solar Energy Per Square Meter: How Much Power Can You ...](#)

Mar 2, 2025 · As the world increasingly shifts towards renewable energy, it's essential for homeowners and businesses to understand solar energy production comprehensively. This ...



[How many square meters of space is required ...](#)

Oct 10, 2024 · The area required for each kilowatt (kW) solar panel system is approximately 5 to 10 square meters, depending on the panel efficiency ...

[Solar Panel Output Per Square Meter](#)

Apr 30, 2025 · Discover how much electricity solar panels generate per square meter, explore efficiency factors, technology comparisons, and ...





[How Many Square Meters Is One Solar Panel?](#)

Apr 13, 2025 · Discover the average size of a solar panel in square meters and its implications for your energy needs and installation space. Solar panel installations have surged by more than ...

[Solar Panel Output Per Square Meter](#)

Apr 30, 2025 · Discover how much electricity solar panels generate per square meter, explore efficiency factors, technology comparisons, and future innovations in photovoltaic energy.



Contact Us

For technical specifications, project proposals, or partnership inquiries, please visit:
<https://meble-decorator.pl>

Scan QR Code for More Information



<https://meble-decorator.pl>