

How many volts is the best external power supply for a base station





Overview

How do I choose a power supply?

Suitable for simple, robust devices. Regulated Supplies: Maintain a stable output voltage regardless of input variations. Ideal for sensitive electronics. Modern power supplies often support a wide input voltage range (90-240V AC) and work worldwide. Identify Voltage Requirements: Check the device's label or manual for the required voltage.

What are the different types of external power supply?

Wall Adapters (Wall Warts) The most common type of external power supply is the wall adapter, also called a wall wart. Electronic devices require DC power, which is converted from AC power from a wall outlet. These adapters are typically used in low-power electronics such as mobile phones, routers, and household electronics.

What is a good power supply unit?

1. MSI MAG A550BN The MSI MAG A550BN is a solid power supply unit (PSU) built on a reliable, though dated, CWT platform. It delivers dependable performance with decent quality components, ensuring stability and longevity for your system. Certified 80Plus Bronze, this PSU provides passable efficiency without breaking the bank.

Should I use a 9V or 18V power supply?

If your device requires 9V, use a 9V power supply. Slight deviations, like using an 18V supply for a 19V device, might be acceptable but are not recommended. The device draws the current it needs, and the power supply provides it. Therefore, the power supply must meet or exceed the device's current requirements.



How many volts is the best external power supply for a base station



[PC Power Supply Calculator - PSU Wattage Calculator](#)

Calculating the wattage of a Power Supply Unit (PSU) is important because it ensures your computer gets the right amount of power. The best power supply for your PC build is the one ...

[How to Select the Right External Power Adapter](#)

Nov 21, 2025 · Selecting the right external power adapter can keep your devices and the adapter running smoothly. Learn more about choosing your external power adapter today!



[Selecting the Right Supplies for Powering 5G Base Stations](#)

As a result, a variety of state-of-the-art power supplies are required to power 5G base station components. Modern FPGAs and processors are built using advanced nanometer processes ...



[External Power Supply: How to Pick the Best One \(Guide\)](#)

Aug 29, 2024 · Each external power supply is designed to meet a specific power requirement and application, such as wall adapters, desktop power supplies, and battery packs. In addition to



...



PSU Tier List (2025)

2 days ago · Here you'll find a comprehensive PSU Tier List that categorizes power supplies into 6 different tiers - from the best (Tier 1) to the least recommended (Tier 6). Use this list to ...



[Choosing the Right Power Supply: A Comprehensive Guide](#)

Jul 26, 2024 · Selecting the correct power supply is critical to an electronic device's safe and efficient operation. This guide delves into the factors necessary for choosing the appropriate ...



[External Power Supply: How to Pick the Best ...](#)

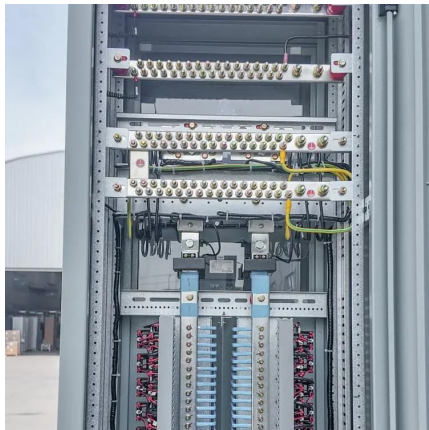
Aug 29, 2024 · Each external power supply is designed to meet a specific power requirement and application, such as wall adapters, desktop power ...





[\[Power Supply\]How to choose the right wattage power supply ...](#)

May 28, 2025 · [Power Supply]How to choose the right wattage power supply for your computer?
Q:How to choose the right wattage power supply for your computer? A:Choose the right ...



[Power supply for base station.](#)

May 13, 2022 · For my higher power radio (KG-1000G) I just use the AC output to my SamlexPower SEC-1235 power supply that is stable at 13.8, even under the load on H power ...

[How to Select the Right External Power Adapter](#)

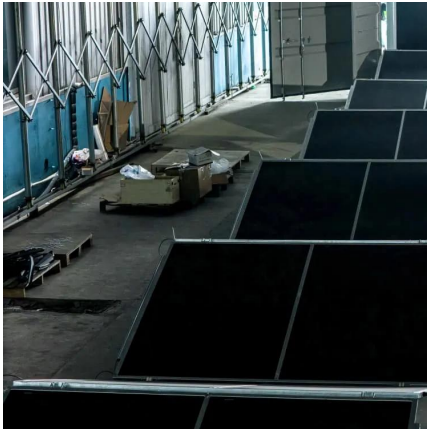
What Are External Power Adapters?How Do I Know Which External Adapter to use?Contact Us with Any QuestionsWhen choosing an external power adapter for any application, one must consider a few critical parameters to ensure that the adapter will perform effectively and safely:See more on [astrodynetdi Phipps Electronics](#)



Choosing the Right Power Supply: A ...

Jul 26, 2024 · Selecting the correct power supply is critical to an electronic device's safe and efficient operation. This guide delves into the factors ...

[How many volts is a good external power](#)



[supply for a ...](#)

Nov 3, 2025 · Power Supply Considerations: A mobile radio typically runs off a 12-volt DC power supply, which is provided by the car battery when the vehicle is running. How many volts does ...

[Best Power Supplies of 2025](#)

1 day ago · Here are the best power supplies for gaming PCs. These PSUs offer the best reliability, performance, and protection for your components.



Contact Us

For technical specifications, project proposals, or partnership inquiries, please visit:
<https://meble-decorator.pl>

Scan QR Code for More Information



<https://meble-decorator.pl>