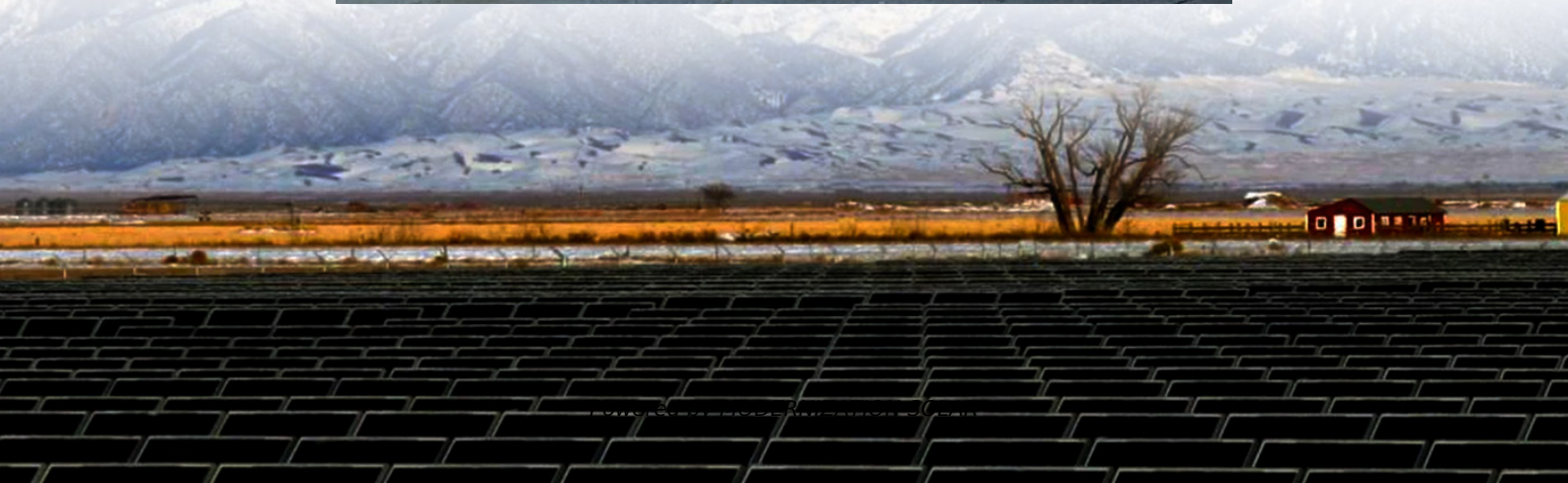


How many volts should the lithium iron phosphate battery for base stations be discharged





Overview

What is the voltage of a lithium phosphate battery?

Every lithium iron phosphate battery has a nominal voltage of 3.2V, with a charging voltage of 3.65V. The discharge cut-down voltage of LiFePO₄ cells is 2.0V. Here is a 3.2V battery voltage chart. Thanks to its enhanced safety features, the 12V is the ideal voltage for home solar systems.

Why is voltage chart important for lithium ion phosphate (LiFePO₄) batteries?

Voltage chart is critical in determining the performance, energy density, capacity, and durability of Lithium-ion phosphate (LiFePO₄) batteries. Remember to factor in SOC for accurate reading and interpretation of voltage. However, please abide by all safety precautions when dealing with all kinds of batteries and electrical connections.

What is a lithium iron phosphate battery?

Lithium Iron Phosphate batteries also called LiFePO₄ are known for high safety standards, high-temperature resistance, high discharge rate, and longevity. High-capacity LiFePO₄ batteries store power and run various appliances and devices across various settings.

What voltage should A LiFePO₄ battery be discharged at?

Discharge Voltage- Discharge optimal voltage is 2.5V. A user should never discharge under this level. Exceeding the discharge limit damages the battery. Deep Discharge- At this point, the voltage runs below the recommended level. Deep discharge renders the LiFePO₄ batteries and may render them completely obsolete.



How many volts should the lithium iron phosphate battery for base



[How to Properly Charge Lithium Iron Phosphate Batteries](#)

Feb 12, 2025 · Lithium Iron Phosphate Batteries
Lithium Iron Phosphate batteries offer several advantages over sealed lead acid (SLA) batteries, including more cycles, more consistent ...

[Guide to LiFePO4 Voltage Chart](#)

Jul 31, 2025 · LiFePO4 Voltage Chart The LiFePO4 Voltage Chart is a crucial tool for understanding the charge levels and health of Lithium Iron ...



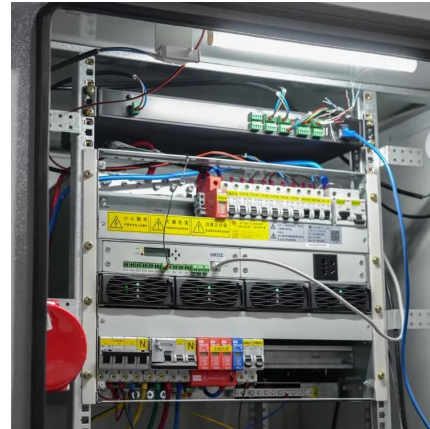
[Guide to LiFePO4 Voltage Chart](#)

Jul 31, 2025 · LiFePO4 Voltage Chart The LiFePO4 Voltage Chart is a crucial tool for understanding the charge levels and health of Lithium Iron Phosphate batteries. This chart ...



[How to Determine the Best Voltage for LiFePO4 Batteries](#)

Apr 24, 2025 · LiFePO4 (Lithium Iron Phosphate) batteries are renowned for their stability, safety, and longevity. The nominal voltage of a single LiFePO4 cell is typically around 3.2 volts, while ...

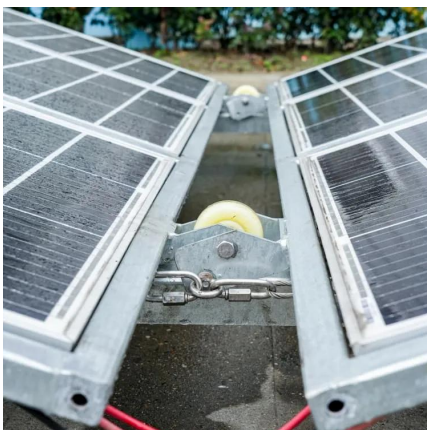


[How to Charge Lithium Iron Phosphate ...](#)

May 19, 2025 · Energy-X Lithium Iron Phosphate (LiFePO₄) 12V batteries should be charged at 14.4 Volts (V). For batteries wired in series multiply ...

[How to charge lithium iron phosphate batteries?](#)

For example, if you have a 12 volt 100 Ah LiFePO₄ battery, you need a charger that can provide at least 14.6 volts (3.65 volts per battery) and preferably 10% to 30% of the rated capacity (in ...



[How to Charge Lithium Iron Phosphate LiFePO₄ Battery: ...](#)

May 19, 2025 · Energy-X Lithium Iron Phosphate (LiFePO₄) 12V batteries should be charged at 14.4 Volts (V). For batteries wired in series multiply 14.4V by the number of batteries.



What is the correct charging method for lithium iron phosphate batteries?

Sep 15, 2025 · Nova Battery Suggestion:
Charging lithium iron phosphate batteries requires adherence to the standard constant current and constant voltage process, focusing on ...



[What is the correct charging method for ...](#)

Sep 15, 2025 · Nova Battery Suggestion:
Charging lithium iron phosphate batteries requires adherence to the standard constant current and ...



[A Comprehensive LiFePO4 Voltage Chart ...](#)

Lithium Iron Phosphate (LiFePO4) batteries have revolutionized energy storage with their exceptional performance, longevity, and safety features. ...



[A Comprehensive LiFePO4 Voltage Chart Guide for Off-Grid ...](#)

Lithium Iron Phosphate (LiFePO4) batteries have revolutionized energy storage with their exceptional performance, longevity, and safety features. At the heart of understanding and ...



[How to Charge Lithium Iron Phosphate \(LFP\) Batteries Safely](#)

Sep 29, 2025 · Comprehensive guide to Lithium Iron Phosphate (LFP) battery charging: recommended voltage, charging curves, strategies, and best practices for EVs, ESS, and ...



[LiFePO4 Voltage Charts \(1 Cell, 12V, 24V, 48V\)](#)

Jun 8, 2022 · Explore the LiFePO4 voltage chart to understand the state of charge for 1 cell, 12V, 24V, and 48V batteries, as well as 3.2V LiFePO4 cells.

[How to Charge Lithium iron Phosphate \(LiFePO4\) Battery?](#)

Jan 10, 2025 · Step-by-Step Guide to Charging Lithium iron Phosphate(LiFePO4) Batteries. Notes on Charging Lithium iron Phosphate(LiFePO4) Battery. Troubleshooting Common Charging ...



Contact Us

For technical specifications, project proposals, or partnership inquiries, please visit:
<https://meble-decorator.pl>



Scan QR Code for More Information



<https://meble-decorator.pl>