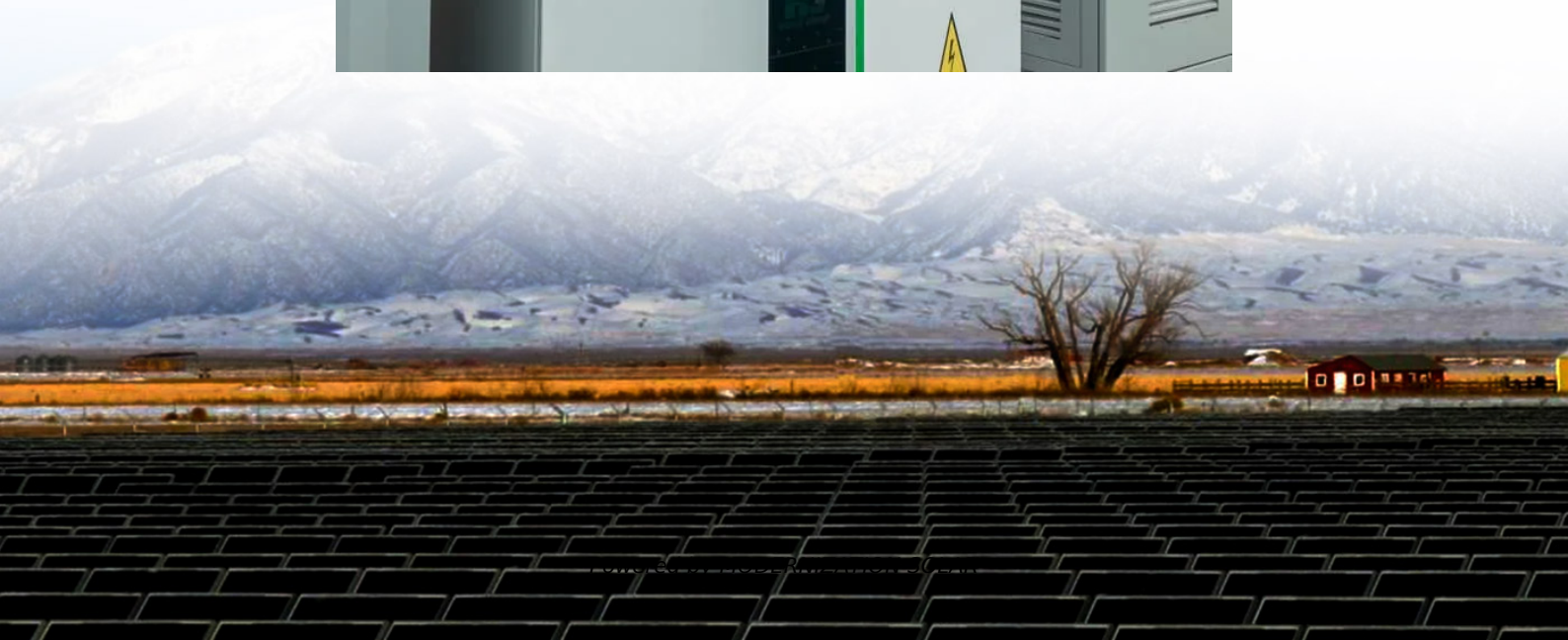


How many watts can a 20kw inverter be installed





Overview

How many watts can a solar inverter handle?

Solar inverters convert DC solar power into usable household AC power. These inverters can handle a range of power sources from 20,000 watts to 24,999 watts. Compare these 20kW commercial solar inverters from Fronius, SMA, SolarEdge, Schneider Electric, Power One, Advanced Energy, Kaco, Outback Power, Magnum Energy.

Can a 20kW solar array be put on an inverter?

A 20kW solar array can be put with an inverter with an AC output of 15.00kW. What you "can" do is not what you "should" do. All inverters have different specs. And based on those specs you might be able to put a LOT more panels on than the rated inverter capacity. That does not mean you should.

How many inverters do you need for a 12 kW solar system?

Inverter: one or two inverters of a combined 10 kW–15 kW A 12 kW solar installation in a farm near Berlin utilized a 10 kW inverter with excellent results—saving a couple of hundred dollars on initial cost and still registering peak output. 3. Equate Load Requirements, Not Panel Watts It's not solely about sunlight—actual usage matters, too.

What size solar inverter do I Need?

It is usually good to have an inverter that is less than the array size. A 20kW solar array can be put with an inverter with an AC output of 15.00kW. What you "can" do is not what you "should" do.



How many watts can a 20kw inverter be installed



[How Many Solar Panels Can I Connect to an Inverter? A ...](#)

4 days ago · Learn how to optimize your solar power system by understanding how many solar panels can be connected to an inverter. Explore inverter specifications, wiring configurations, ...

[How many watts can a 20kw inverter be installed](#)

5 days ago · A solar array can be up to 130% of the inverter capacity. So if you have a 4000 watt inverter you can install a 5200 watt solar power system. With a 5kw inverter, you can have up ...



[How Many Solar Panels Can a 20kW Inverter Handle? Let's ...](#)

That's essentially the "how many panels for a 20kW inverter" debate. While the theoretical maximum is 50 x 400W panels, real-world factors like panel efficiency, sunlight conditions, and ...

[Inverter Size Calculator - self2solar](#)

Feb 20, 2025 · Optimize your solar system by calculating the ideal inverter size. Simply input panel specs for a recommended inverter power range ...



[20kW Solar System Information - Facts & ...](#)

20kW Solar System Information - Facts & Figures. Everything you ever wanted to know about this solar system size including production estimates.



[The Power of 20kW DC Solar Inverters: A Comprehensive Guide](#)

Understanding 20kW Solar InvertersThe Essentials of 20kW Solar Inverter Technology20,000 watt DC solar inverters are integral in both residential and commercial solar installations. Their ...



[How to Choose the Right Size Solar Inverter: ...](#)

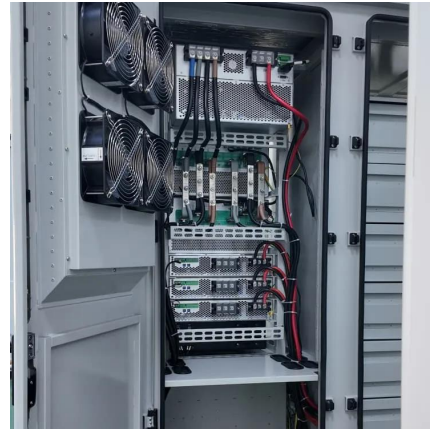
Jul 15, 2025 · Wondering what size solar inverter do I need for your solar system? This guide walks you through calculating inverter size based on ...





[20kW Solar System Information - Facts & Figures](#)

20kW Solar System Information - Facts & Figures. Everything you ever wanted to know about this solar system size including production estimates.



[Powerwall 3 DC System Sizing](#)

Sep 12, 2025 · Powerwall 3 can be configured as up to a 11.5 kW / 48 A AC rated inverter that can support up to a maximum DC system size of 20 kW. 20 kW DC is the absolute maximum solar ...

[20000 Watt DC Solar Inverters](#)

These inverters can handle a range of power sources from 20,000 watts to 24,999 watts. Compare these 20kW commercial solar inverters from ...



[Inverter Size Calculator - self2solar](#)

Feb 20, 2025 · Optimize your solar system by calculating the ideal inverter size. Simply input panel specs for a recommended inverter power range that ensures efficiency and safety today!



20000 Watt DC Solar Inverters

These inverters can handle a range of power sources from 20,000 watts to 24,999 watts. Compare these 20kW commercial solar inverters from Fronius, SMA, SolarEdge, Schneider ...



Powerwall 3 DC System Sizing

Sep 12, 2025 · Powerwall 3 can be configured as up to a 11.5 kW / 48 A AC rated inverter that can support up to a maximum DC system size of 20 ...

How to Choose the Right Size Solar Inverter: Step-by-Step ...

Jul 15, 2025 · Wondering what size solar inverter do I need for your solar system? This guide walks you through calculating inverter size based on panel capacity, power usage, and safety ...



20kW Inverter: Your Comprehensive Guide to Solar Energy ...

May 18, 2025 · A 20kW inverter converts 20,000 watts of DC electricity from solar panels into AC electricity, suitable for household and commercial use. How does a grid tie inverter work?



Contact Us

For technical specifications, project proposals, or partnership inquiries, please visit:
<https://meble-decorator.pl>

Scan QR Code for More Information



<https://meble-decorator.pl>