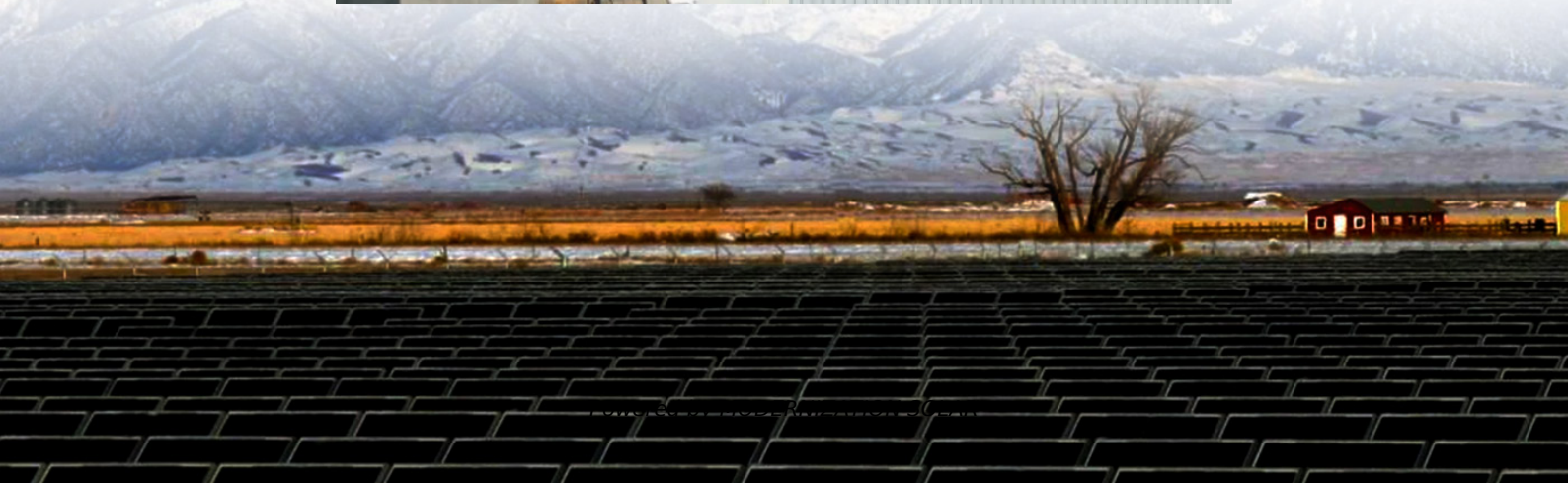


How much power does an outdoor base station usually have





Overview

How much power does a base station have?

Maximum base station power is limited to 38 dBm output power for Medium-Range base stations, 24 dBm output power for Local Area base stations, and to 20 dBm for Home base stations. This power is defined per antenna and carrier, except for home base stations, where the power over all antennas (up to four) is counted.

What is base station Power?

Base station power refers to the output power level of base stations, which is defined by specific maximum limits (24 dBm for Local Area base stations and 20 dBm for Home base stations) and includes tolerances for deviation from declared power levels, as well as specifications for total power control dynamic range. How useful is this definition?

.

What is the maximum base station Power?

Maximum base station power is limited to 24 dBm output power for Local Area base stations and to 20 dBm for Home base stations, counting the power over all antennas (up to four). There is no maximum base station power defined for Wide Area base stations.

How much power does an antenna use?

The antenna output power level is typically between 20 watts and a few hundred watts for an outdoor base station. Television transmitters, by comparison, have 10-1000 times higher output power than outdoor base stations. Antennas mounted indoors use very low power levels, typically around a few watts or less.



How much power does an outdoor base station usually have



[Base Station Antenna Types: A ...](#)

Learn about the different types of base station antennas, their features, applications, and advantages. This guide will help you choose the best ...

[How Many Watts Does a Ham Radio Use: Understanding Power ...](#)

Aug 13, 2023 · AC Power Supply: An AC power supply is a common power source for ham radio stations, especially in the home or a fixed location. The power requirement of an AC power ...

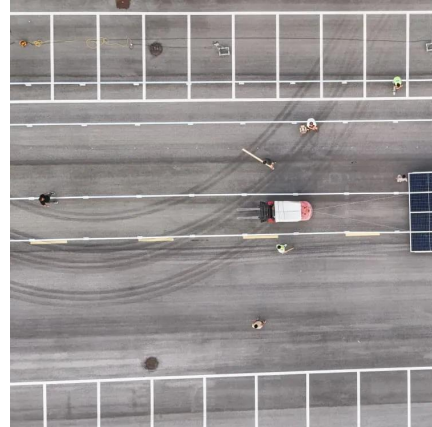


[The basic things about substations you MUST ...](#)

Jan 9, 2019 · Substation also dispatches electric power from generating stations to the consumption center. Electric power may flow through ...

[5GHz 300Mbps Outdoor Wireless Base Station](#)

May 10, 2020 · 5GHz 300Mbps Outdoor Wireless Base StationEnterprise Level Hardware Design To maximize performance and stabilize long distance wireless transmission, the Pharos Series

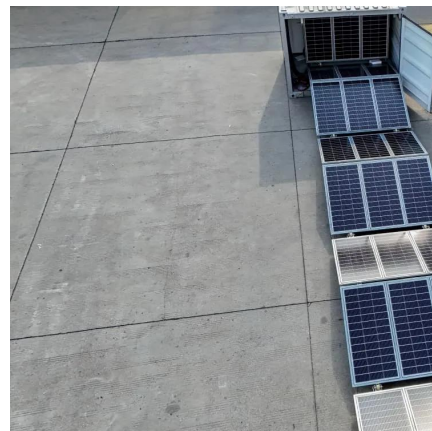


[How much power does a cell tower consume?](#)

Aug 5, 2023 · Loosely speaking, you have towers that communicate the internet or data between two devices. The purpose of this blog is to know how much power such cell towers consume. ...

[5GHz 300Mbps Outdoor Wireless Base ...](#)

May 10, 2020 · 5GHz 300Mbps Outdoor Wireless Base StationEnterprise Level Hardware Design To maximize performance and stabilize long ...



[Base stations and networks](#)

4 days ago · The antenna output power level is typically between 20 watts and a few hundred watts for an outdoor base station. Television transmitters, by comparison, have 10-1000 times ...



[Mobile Phone Base Stations EMF / Health Fact Pack](#)

Jul 10, 2013 · Base station sites Transmitted power levels from base stations vary considerably depending on the required area or 'cell' that they are providing coverage for. Typically ...

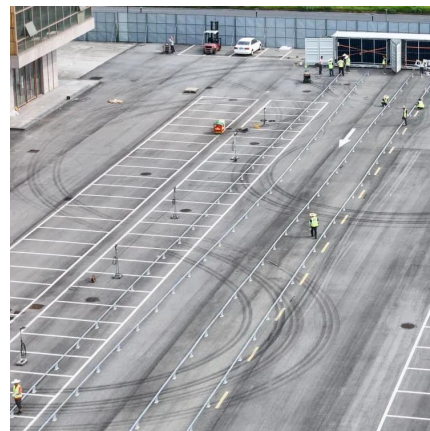


[What is the typical power of an outdoor base station](#)

Oct 16, 2025 · Each base station can only serve a limited number of mobile devices at a time. As the number of mobile devices in a community grows, more base stations. The antenna output ...

Power Consumption Analysis of a 5G NR Base Transceiver Station ...

Jul 17, 2025 · This work has explored the power consumption of an outdoor commercial 5G NR base station using an inexpensive and custom-built power measurement setup.



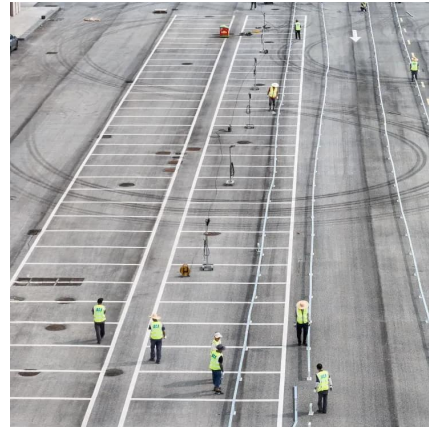
[Size, weight, power, and heat affect 5G base ...](#)

Apr 26, 2021 · Engineers designing 5G base stations must contend with energy use, weight, size, and heat, which impact design decisions.



[Aerial Base Stations: Practical Considerations for Power ...](#)

Mar 11, 2024 · Our findings provide valuable insights for researchers and telecom operators, facilitating effective cost planning by determining the number of ABSs and backup batteries ...



[Key Factors Affecting Power Consumption in ...](#)

Sep 10, 2024 · Discover the key factors influencing power consumption in telecom base stations. Optimize energy efficiency and reduce operational ...

[How Many Watts Does an Outdoor Party Need](#)

Find out how many watts your outdoor party really needs. From small gatherings to large festivals, get practical tips and the best backup power solutions.



[What Is a Portable Power Station and How Do ...](#)

Jun 28, 2023 · A portable power station is a device that stores energy in a rechargeable battery. You can use a portable power station as a source ...



Base Station Antenna

The levels of public exposure to electromagnetic energy from any base station vary depending on antenna type, location and distance from the base station. The base station antennas are most ...

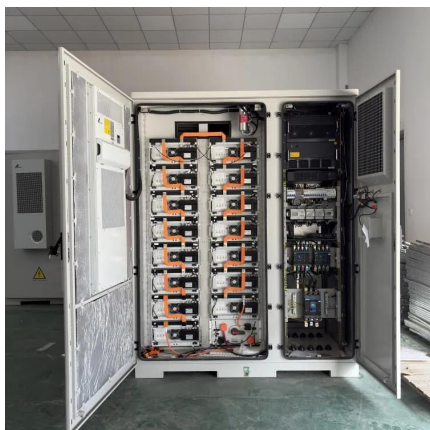
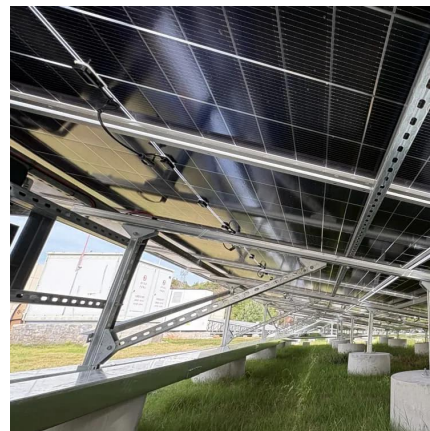


Power Base Station

The transmitter characteristics define RF requirements for the wanted signal transmitted from the UE and base station, but also for the unavoidable unwanted emissions outside the transmitted ...

[Key Factors Affecting Power Consumption in Telecom Base Stations](#)

Sep 10, 2024 · Discover the key factors influencing power consumption in telecom base stations. Optimize energy efficiency and reduce operational costs with our expert insights.



[Why does 5g base station consume so much ...](#)

Apr 3, 2025 · The power consumption of the 5G base station mainly comes from the AU module processing and conversion and high power ...



ICNIRP , Base Stations

The power of a base station varies (typically between 10 and 50 watts) depending on the area that needs to be covered and the number of calls processed. This is low compared to other ...

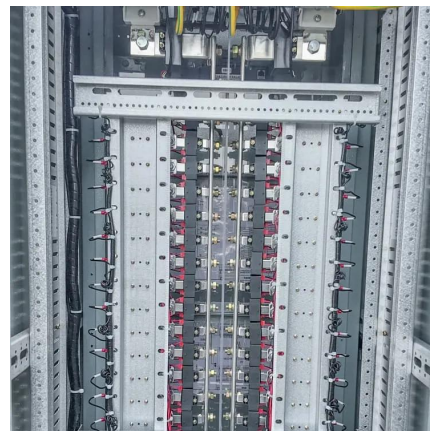


Telecom base station system ...

Jan 13, 2024 · The EverExceed ECB series telecommunications base station system is a new generation of outdoor multi energy integrated power supply system with MPPT function. ...

Base station types: a solution for every deployment scenario

Apr 28, 2021 · In recent years, technological advances have meant that this base station format has improved its performance in terms of RF power and traffic channels. Thus, by adopting ...



Contact Us

For technical specifications, project proposals, or partnership inquiries, please visit:
<https://meble-decorator.pl>



Scan QR Code for More Information



<https://meble-decorator.pl>