

# How to connect the UPS and battery cabinet cables





## Overview

---

Route the DC cables from the UPS through the bottom of the classic battery cabinet and connect the battery cables (N, DC+, DC-). Use lock washers (not provided) when connecting the DC cables. How to connect a UPS battery to a host?

F. Before connecting the battery cables from the battery cabinet to the host, measure the battery voltage with a multimeter, which should be 103.36V, and check if the positive and negative leads are correctly connected. If there is a battery box, connect the batteries in series and link them to the host as required. 2. UPS Battery Wiring Example A.

How to install UPS & battery cabinet?

1. Installation sequence is as follows: 1.1 First, determine the installation location of the UPS and battery cabinet upon arrival at the site. 1.2. Install the battery connection Wires.

How to install a ups power supply?

The most important aspect of installing a UPS power supply is connecting the batteries. The key to connecting the batteries is to link the positive terminal to the negative terminal, connecting each battery in series, and then leading out two power cables, one positive and one negative, to connect to the air switch. C.

Does a ups have a wire connection?

The internal wiring is built in the factory and adapted to the characteristics of the devices. For the other UPSs, the wire connections to the power supply system, to the battery and to the load are not included. Wiring connections depend on the current level as indicated in Figure N28 below.



## How to connect the UPS and battery cabinet cables

---



### SL-25657\_REV3\_01-21

Feb 27, 2020 · Refer to the illustration, "Cabling 3U Cabinets in Parallel," above, and connect the UPS-to-battery cable to Connectors A on each battery cabinet in the battery string.

### Connect the Power Cables

If more battery cabinets are part of the solution, connect all battery cabinets to the UPS according to the diagram below. NOTE: If the combined short circuit current of the battery cabinets ...



### [Installation, connection and sizing of cables with UPS](#)

Cable Temperature Rise and Voltage Drops  
Temperature Rise  
Voltage Drops  
Special Case For Neutral Conductors  
The cross section of cables depends on: 1. Permissible temperature rise 2. Permissible voltage drop For a given load, each of these parameters results in a minimum permissible cross section. The larger of the two must be used. When routing cables, care must be taken to maintain the required distances between control circuits and power circuits, to See more on electrical-installation Vertiv[PDF]

### Liebert® EXS External Battery Cabinet Installer/User Guide

Jan 31, 2024 · Connect the system battery cables



from the UPS battery terminals (+, N, -) to battery cabinet breaker BCB (+, N, -) as shown in Figure 3.3 on page 17 . Make sure that the ...

## cover4

Sep 10, 2024 · The parallel redundant system refers to the parallel cabinet in conjunction with the UPS modules. The parallel redundant system consists of one parallel cabinet, two identical ...



## [Battery UPS Connection: How to Connect a Battery to an ...](#)

Jan 14, 2024 · Learn how to properly connect a battery to a UPS, backup power supply, uninterruptible power supply, or power supply to ensure reliable and uninterrupted power for ...

## Connect the Power Cables

Connect the battery cables (N, Batt+, Batt-) from the batteries in the second classic battery cabinet to the right side of the battery breaker in the first classic battery cabinet.



## [How to do UPS Battery Wiring?](#)

5 days ago · F. Before connecting the battery cables from the battery cabinet to the host, measure the battery voltage with a multimeter, which should be 103.36V, and check if the positive and ...





## U-ENM00044

Feb 3, 2025 · Connect main cables from the UPS DC input terminals to the battery cabinet output. Refer to the supplied battery cabinet drawings for information on the battery cabinet output ...



## Easy UPS Modular Battery Cabinet

Sep 18, 2020 · Route the battery temperature sensor cables through the conduit box to the UPS. Disconnect the cables from J2-1 and J2-2 and connect the battery temperature sensor.



## Detailed Instructions on the Installation and Wiring Methods of UPS

1. Confirm the position of the battery switch, clarify the positive and negative directions of the battery in the battery cabinet, and install the air switch and wiring terminals on the battery ...



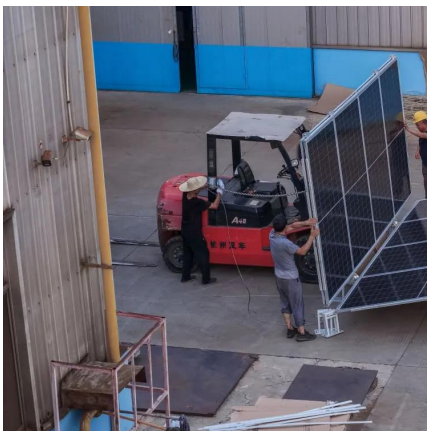


## Installing Power Supply and Distribution Devices

(Optional) If two battery strings are configured, connect cables from the UPS terminals + and - of one battery string to the UPS terminals + and - of the other battery string, as shown by (1) in ...

## Routing Cables (400 kVA, 500 kVA, or 600 kVA UPS)

The figures are for reference only. Cables are connected in the same way for the 400 kVA, 500 kVA, and 600 kVA UPS. This section describes how to connect cables for the 400 kVA UPS. ...



## Installing UPS Battery Cables

That is, two DT terminals can be crimped at one bolt. After connecting cables, calibrate the torque and fully tighten the bolts using a torque wrench. Connect the positive and negative battery ...

## Cable Connections to the Power Supply and Distribution ...

Connect the cord end terminal on the IT cabinet output power cable routed out of the Converged Cabinet to the rPDU cable port in the cabinet, as shown in Figure 4-210.





## Installing Power Cables

The battery neutral wire is routed from the middle of positive and negative battery strings, each consisting of 20 batteries. Figure 4-32 Battery neutral wire Connect the positive, neutral, and ...

## Table of Contents (Formal design)

Mar 5, 2019 · The suggested method of wiring Utility AC to the UPS from the traffic signal cabinet is to connect the UPS at the traffic cabinet after the main cabinet breaker and surge ...



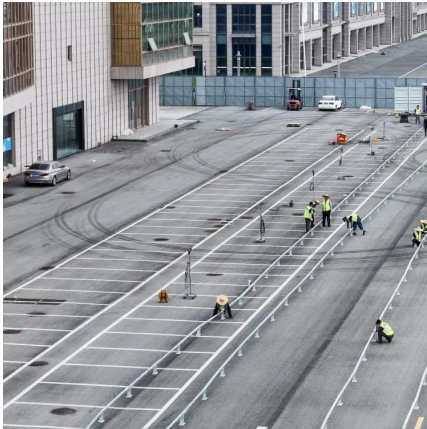
## Connect Cables between the Easy UPS 3S and the Modular Battery Cabinet

Route the battery temperature sensor cables through the conduit box to the UPS. Disconnect the cables from J2-1 and J2-2 and connect the battery temperature sensor.

## UPS WITH A BATTERY SYSTEM 101. EDUCATION FOR ...

Jan 10, 2023 · The above questions are the basics on selecting a UPS with battery system, however there are many factors to consider. The most common topology of a UPS with a ...





## UNDERSTANDING UPS SYSTEMS AND BATTERIES

Jul 17, 2024 · Battery types Batteries are available in a range of technologies, including lead-acid, nickel- cadmium, lithium ion, lithium-sulfur, aluminum-ion, nickel-metal, and more. Of all these, ...

## Contact Us

---

For technical specifications, project proposals, or partnership inquiries, please visit:  
<https://meble-decorator.pl>

## Scan QR Code for More Information



<https://meble-decorator.pl>