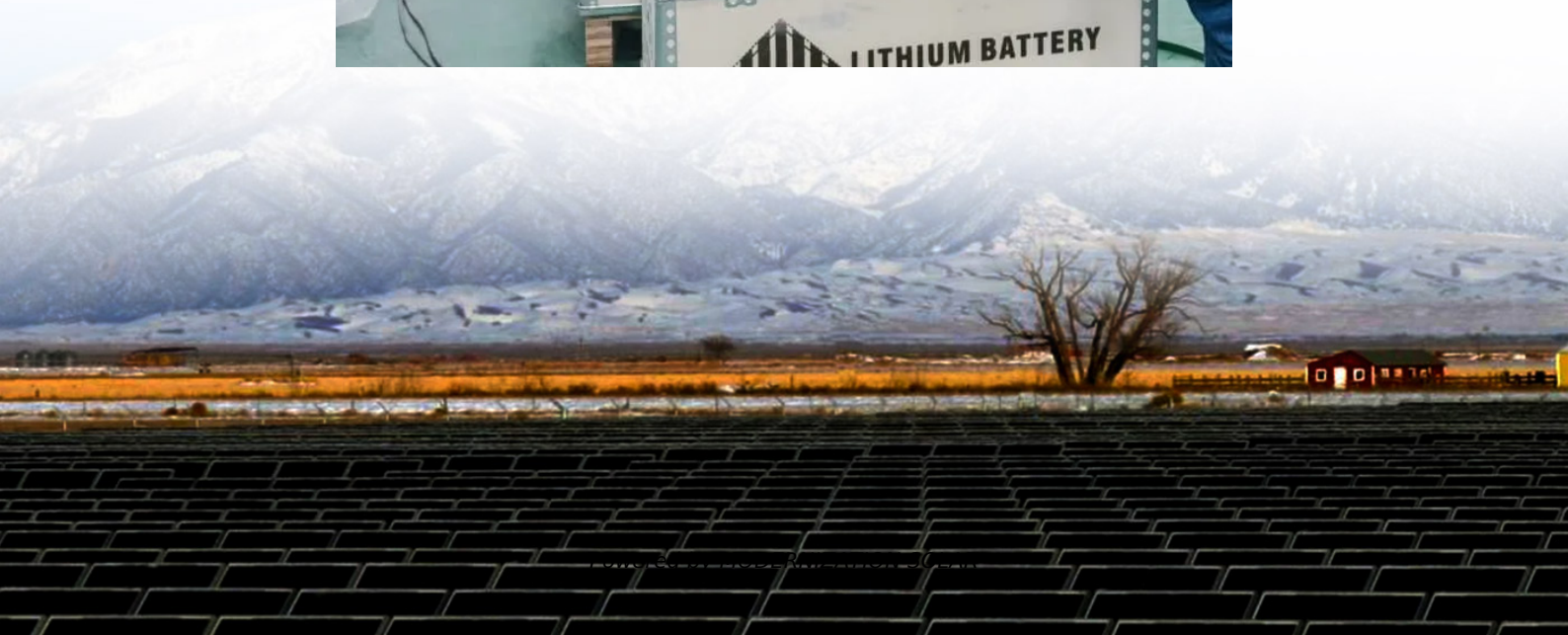


# How to ground the wind power supply of the base station





## Overview

---

What type of grounding does a wind turbine generator use?

3 Typical Wind Turbine Generator Internal Grounding Systems TN-S Considers Lightning and Power System Fault protections IEC Type B WTG Grounding Designs -Ring Conductor -Driven Rods  $\leq 10$  Ohms 4 Ground System Interconnections Foundation plus Horizontal Grounding Design Concept.

Why do wind turbines need grounding circuits?

Discover the implementation of grounding circuits for concrete foundations of wind turbines To ensure continuity of service, profitability while preserving the protection of infrastructure and people, earthing of the wind turbine is an essential element in the protection against lightning and power surges.

Should a main substation be designed in isolation from a wind farm?

The earthing system for the main substation should be designed in isolation from the wind farm (IEEE Std 2760-2020). The reasons are that the substation may have been constructed and energised before and can exist without the wind farm and produce fault currents.

How to design a wind turbine earthing system?

The design of the earthing system shall correspond to the lightning protection level (LPL) for which the wind turbine protection system is designed. The minimum radius of the ring conductor or the foundation earth electrode (re) is 5 meters for a system designed to meet lightning protection Class III or IV.



## How to ground the wind power supply of the base station

---



### Earthing solutions for wind power plants , OBO

The foundation of a wind power plant fulfils several tasks as the transition point between the tower and the ground: On the one hand, it prevents the wind power plant from falling over or sinking, ...

### Grounding of Wind Power Systems and Wind Power ...

Apr 13, 2023 · Power continuity is essential in wind power projects where a tripped overcurrent device due to ground fault can have serious economic or operational consequences. An arcing ...



### EARTHING AND GROUNDING WIND TURBINES

By combining solar and wind power sources with energy storage, a wind turbine and solar panel combination offers a reliable and sustainable solution for meeting electricity needs in various ...



### Protecting wind turbines through effective grounding , Megger

Jan 13, 2023 · The share of wind power in electricity generation is expected to increase, and with that comes a requirement for this carbon-free source to be more reliable. The wind



turbine, ...

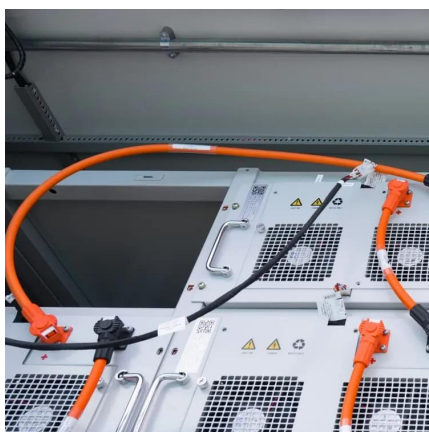


### [Grounding of Wind Power Systems and Wind ...](#)

Apr 13, 2023 · Power continuity is essential in wind power projects where a tripped overcurrent device due to ground fault can have serious economic ...

### [Wind Farm Earthing Design and Modelling Guide](#)

Wind turbine generator and combined earthing, touch voltages, soil resistivity measurements, fault currents, software modelling, and validation testing.



### [Design of grounding systems in wind farms according to ...](#)

References: [1] IEEE Std 2760-2020 TM, IEEE Guide for Wind Power Plant Grounding System Design for Personnel Safety. [2] IEEE Std 80TM, IEEE Guide for Safety in AC Substation ...



## Grounding of Wind Turbines

1 troduction As in all power plants, grounding is of great importance in wind power plants. Grounding is used effectively to protect plant employees ...



## Grounding of Wind Turbines

1 troduction As in all power plants, grounding is of great importance in wind power plants. Grounding is used effectively to protect plant employees and surrounding living things, to ...

## Wind Farm Collector System Grounding.ppt [Read-Only]

May 29, 2008 · Foundation + Horizontal  
Electrode grounding design Integrated with rest  
of wind power plant



## Earthing and grounding : Wind turbines

To ensure continuity of service, profitability while preserving the protection of infrastructure and people, earthing of the wind turbine is an essential element in the protection against lightning ...



## Ensuring Proper Grounding of Electrical Systems in Wind ...

Introduction Wind energy is one of the fastest growing sources of renewable energy. As wind turbine installations increase globally, the need for robust maintenance and safety procedures ...



## Design of grounding systems in wind farms ...

References: [1] IEEE Std 2760-2020 TM, IEEE Guide for Wind Power Plant Grounding System Design for Personnel Safety. [2] IEEE Std 80TM, IEEE ...

## Contact Us

---

For technical specifications, project proposals, or partnership inquiries, please visit:  
<https://meble-decorator.pl>

**Scan QR Code for More Information**



<https://meble-decorator.pl>