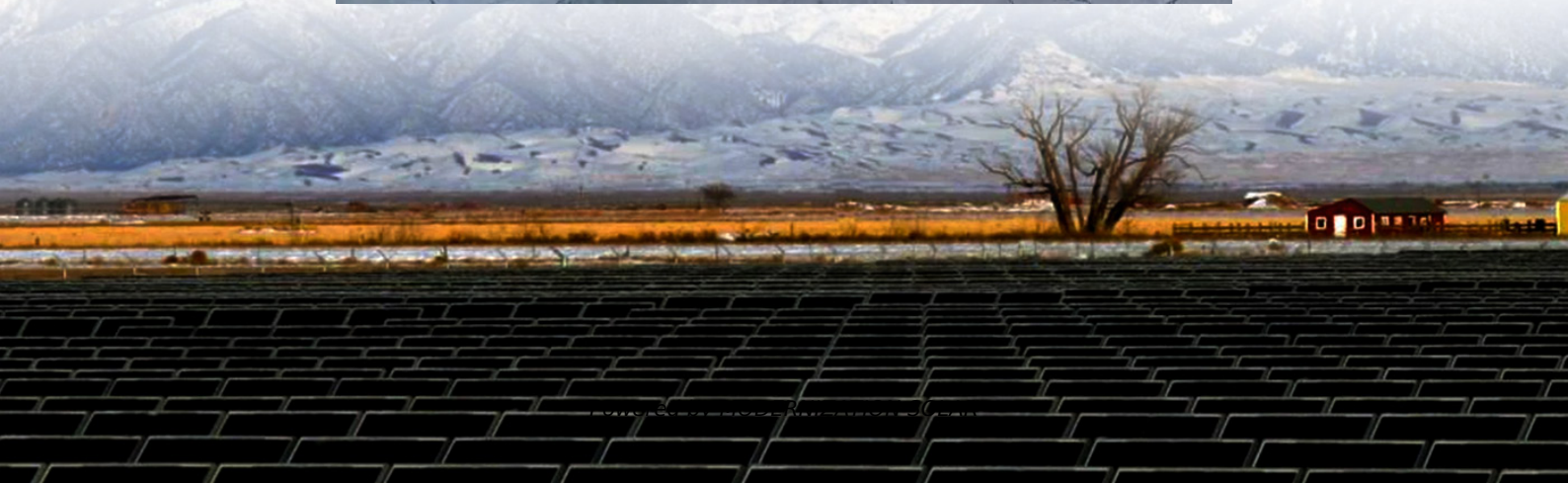


How to install batteries in the battery cabinet in the computer room





Overview

How do I put the batteries in the battery swapping cabinet?

Here is the complete guide on how to put the batteries in the battery swapping cabinet with a hard connection, step by step: Use the Tycorun Energy App to scan the qr code. Then you will hear the voice announcement "Please put the battery in the designated slots." The battery is returned successfully.

How do you put in a battery?

To put in batteries correctly, start by identifying the positive (+) and negative (-) terminals on both the battery and the device. For standard batteries, press the flat negative end against the spring in the compartment, then secure the positive end. For 9-Volt batteries, align the snaps at a slight angle before pushing down.

How do I connect a battery cabinet to a power system?

Procedure 1. Furnished with the battery cabinet are battery disconnect circuit breaker alarm lead assemblies. Refer to the power system installation manual to use these alarm leads to connect the battery cabinet battery disconnect circuit breaker alarm into the power system alarm circuits.

How do you put a new battery in a laptop?

If you're ready to pop in those fresh batteries, read on! For AA, AAA, C, and D batteries, slide the flat, negative end of the battery against the spring onto the device. Then, push the raised, positive end into the flat side of the compartment. For a 9-Volt battery, hold it at a 30° angle to line it up with the connector snaps.



How to install batteries in the battery cabinet in the computer room



[How to Install and Set Up a Battery Storage Cabinet at Home](#)

Apr 19, 2025 · Understanding Battery Storage Cabinet Components and Benefits Key Components of a Battery Storage System A battery storage system is a sophisticated unit ...

[How to Put Batteries In: A Step-by-Step ...](#)

Jun 17, 2023 · Learn how to put batteries in your devices the right way! Our step-by-step guide is designed for beginners and includes useful tips on ...



[How to Put Batteries In: A Step-by-Step Guide for Beginners](#)

Jun 17, 2023 · Learn how to put batteries in your devices the right way! Our step-by-step guide is designed for beginners and includes useful tips on battery safety and storage. Whether you're ...



[How to Put Batteries in Correctly: AA, AAA, 9V, & More](#)

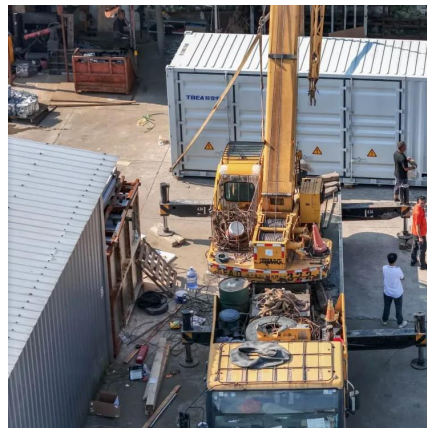
OverviewInstalling AA, AAA, C, and D BatteriesPutting in a 9-Volt BatteryInserting Coin and Button BatteriesLocating the Battery CompartmentLook for a plus symbol on your



battery. The polarity of batteries is what helps them supply current to a device. The plus sign, or "+," indicates the positive terminal. On AA, AAA, C, and D batteries, the positive... The negative end of the battery is completely flat. It may or may not be marked with a minus, or "-", symbol. See more on wikihow Schneider Electric

Install the Battery Modules in the Battery Cabinet

Install the battery modules on the shelves from top to bottom. NOTE: Pay special attention to the location of type A and type B battery modules. Battery Configurations for Battery Cabinets with ...



[How to Install a Rack Lithium Battery System in 2025](#)

Installing a rack lithium battery system is essential for ensuring reliable power supply in data centers and server rooms in 2025.? How do you install a rack lithium battery system??The ...

[Step By Step Instructions for How To Put Batteries In](#)

May 8, 2025 · This article will guide you step by step on how to put batteries in properly, how to check the positive (+) and negative (-) ends, and how to follow the correct process based on ...



[How to Put Batteries In: Simple Steps for Any Device](#)

Jan 19, 2025 · To put batteries in a device, start by checking the battery compartment for the type and polarity needed. For AA or AAA



batteries, place the flat negative end against the spring ...

[Step By Step Instructions for How To Put](#)

...

May 8, 2025 · This article will guide you step by step on how to put batteries in properly, how to check the positive (+) and negative (-) ends, and how ...



[-48 VDC Battery Cabinet Installation and User Manual ...](#)

Apr 21, 2022 · Install the frame ground landing point adapter P/N 556872 to the left or right side of the battery cabinet, as shown in Figure 5.
Figure 5: Installing P/N 556872 Frame Ground ...



How to put batteries in

Apr 10, 2025 · Here is the complete guide on how to put the batteries in the battery swapping cabinet with a soft connection, step by step, refer to the video. (Please watch the video from ...



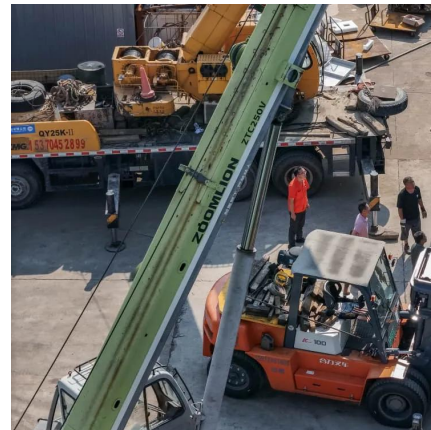


[Install the Battery Modules in the Battery Cabinet](#)

Install the battery modules on the shelves from top to bottom. NOTE: Pay special attention to the location of type A and type B battery modules. Battery Configurations for Battery Cabinets with ...

[How to do UPS Battery Wiring?](#)

4 days ago · A. Determine the location of the battery switch, the positive and negative directions of the batteries in the battery cabinet, and install the air switch and terminal connectors on the ...

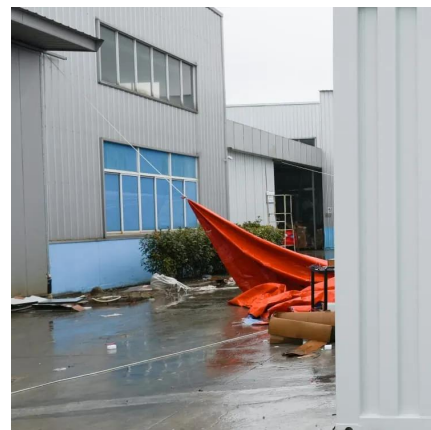


[How to Put Batteries In: Simple Steps for Any ...](#)

Jan 19, 2025 · To put batteries in a device, start by checking the battery compartment for the type and polarity needed. For AA or AAA batteries, ...

[How to Put Batteries in Correctly: AA, AAA, 9V, & More](#)

Dec 27, 2024 · In this article, we'll tell you where to find your device's battery compartment and how to install AA, AAA, C, D, 9-volt, and button batteries. If you're ready to pop in those fresh ...





Contact Us

For technical specifications, project proposals, or partnership inquiries, please visit:
<https://meble-decorator.pl>

Scan QR Code for More Information



<https://meble-decorator.pl>