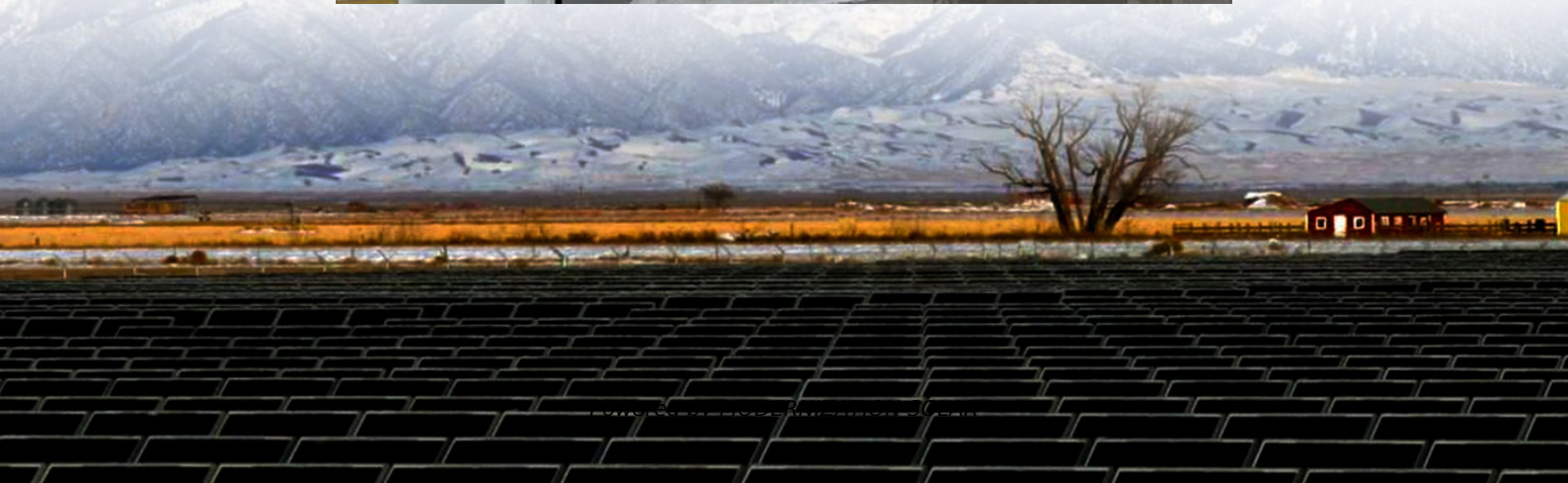


Inverter output voltage is directly connected to the ground





Overview

Do inverters have a neutral to ground connection?

NEUTRAL and GROUND are bonded inside the inverter to comply with the National Electric Code (NEC) requirement that any AC source must have a neutral to ground connection. 4. Ground Terminal — For insulated safety ground wire. As a stand-alone unit, this system should not have an external Neutral-Ground bond.

How does an inverter work?

These inverters use an internal relay that automatically connects the AC neutral output to the vehicle/boat's safety ground (bonding it) in Inverter Mode and disconnects it ("un bonding" it) when they have connected to a qualified external AC source.

Do inverter AC output terminals need a ground wire?

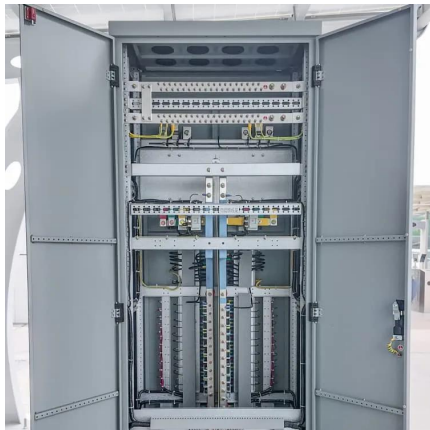
The inverter AC output terminals supply the Neutral to Ground connection and no other such connections are permitted. All Ground Fault detectors do not need a ground wire connection as they sense differential current between Hot and Neutral. Ground wires are there to prevent equipment enclosures, aka " housings", from becoming energized.

How to connect a power inverter to the ground?

The power inverter has a terminal on the rear panel marked " Grounding "or " ". This is used to connect the chassis of the power inverter to the ground. The ground terminal has already connected to the ground wire of AC output receptacle through the internal connecting wire.



Inverter output voltage is directly connected to the ground

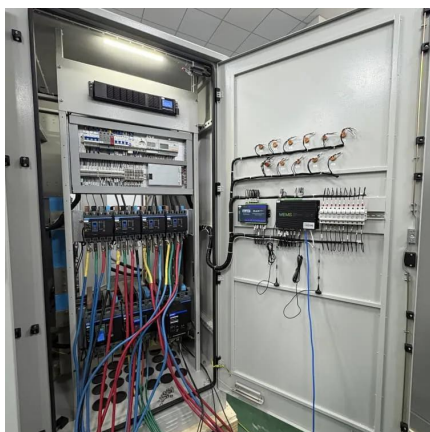


Inverters

The National Electrical Code (NEC) requires the use of a "grounded electrical distribution system" for a permanently connected AC power source. As per this system, one of the two current ...

Ground Fault Basics and Inverter Grounding

Feb 12, 2019 · The one ground wire connection in this AC wiring discussion is a connection to the inverter's high output terminal strip. The terminal strip ground terminal is internally connected ...



What happens if an inverter neutral is bonded to earth?

Apr 15, 2021 · Otherwise, the Neutral wire from the inverter would reference its potential to the Utility Neutral and ground. This is a standard affair with earth bonded neutral utility installation.

Photovoltaic inverter neutral line

Do inverters need a neutral connection? Indeed, some inverter manufacturers explicitly require a neutral connection to provide a proper reference for ground fault protection. Choosing an ...



Grounding schemes for various Inverters

Feb 28, 2025 · The manual says: 3.5.1 Automatic Neutral-to-Ground Connection All single phase 120Vac inverters are equipped with automatic neutral to ground switching. These inverters ...



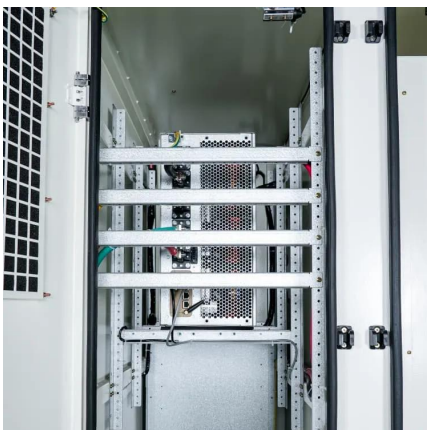
Photovoltaic inverter ground voltage

The PV is connected to the system using current-controlled single-phase voltage source inverters. As the output voltage is regulated by the 4-leg inverter, the single-phase PV



Why don't all inverters have neutral connected to ground?

Aug 6, 2025 · Here's a true sine wave inverter circuit where the ground on the isolated secondary side is connected to the secondary transformer winding: However, just by moving the location ...





Technical Information

Jun 13, 2025 · If an external ground connection on the inverter enclosure is used for equipment grounding, this ground connection should also be connected to the main grounding busbar. ...



[Ground Fault Basics and Inverter Grounding](#)

Feb 12, 2019 · The one ground wire connection in this AC wiring discussion is a connection to the inverter's high output terminal strip. The terminal ...

9. Inverter Settings

Feb 28, 2025 · The manual says: 3.5.1 Automatic Neutral-to-Ground Connection All single phase 120Vac inverter s are equipped with automatic neutral to ground switching. These inverters ...



[7. Ground, earth and electrical safety](#)

Aug 30, 2024 · 7. Ground, earth and electrical safety In this section 7.1. Electrical safety 7.2. Earth wiring 7.3. RCD, RCCB or GFCI 7.4. Neutral to ...





9. Inverter Settings

Sep 17, 2024 · 1. To set output voltage of inverter - This is normally 230 Vac. Possible values 210V ~ 245V. 2. Used to enable/disable the internal ground relay functionality. Connection ...



7. Ground, earth and electrical safety

Aug 30, 2024 · 7. Ground, earth and electrical safety In this section 7.1. Electrical safety 7.2. Earth wiring 7.3. RCD, RCCB or GFCI 7.4. Neutral to earth link in inverters and in inverter/chargers ...

Why PV Output Grounded is Forbidden in Transformerless Inverter?

Sep 1, 2021 · Fig.2 Transformerless PV Inverter
2. Effect of PV conductor grounded Generally, the neutral of the grid is connected to ground (potential earth) and the case of inverter is also ...



Contact Us

For technical specifications, project proposals, or partnership inquiries, please visit:
<https://meble-decorator.pl>



Scan QR Code for More Information



<https://meble-decorator.pl>