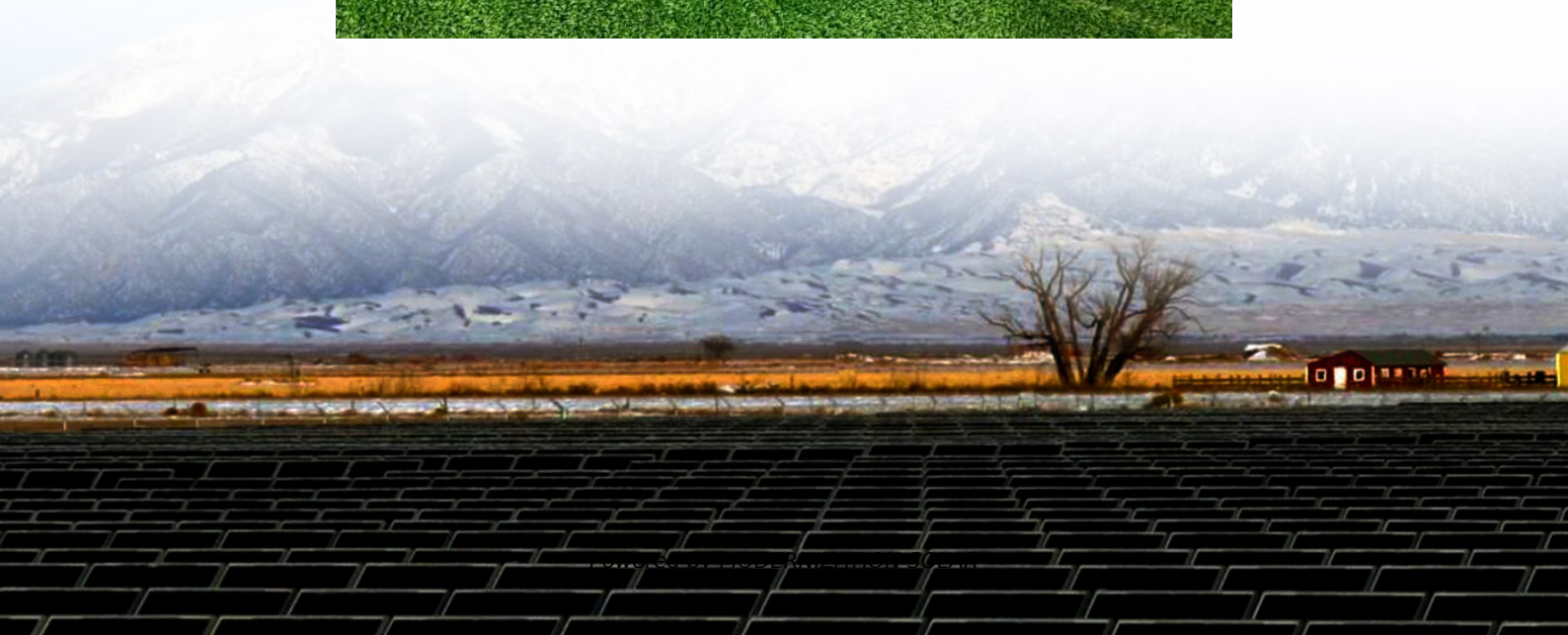


## Inverter unit kw





## Overview

---

What do kW and kVA mean in inverter specifications?

kW refers to the real or usable power output of an inverter. kVA represents the total power capacity it can carry, including power lost in phase difference (reactive power). For example, an inverter rated at 10 kVA with a power factor of 0.8 can only deliver 8 kW of real power.

How much power does a 10000w inverter produce?

$\text{kW} = \text{kVA} \times \text{Power Factor}$  Let's say you have a 10000W inverter and your system's power factor is 0.9:  $\text{kVA} = 10000\text{W} / 0.9 \approx 11.1 \text{ kVA}$  This means your inverter must be capable of handling approximately 11.1 kVA to deliver 10 kW of real power in that scenario.

What is a power inverter?

Introduction: An inverter is an electronic device used to convert direct current (DC) into alternating current (AC). Understanding the power consumption of inverters is crucial when selecting one. This article will explain the concept of inverter unit consumption and provide examples of power consumption for different power inverters.

How much power can a 10 kW inverter handle?

This means your inverter must be capable of handling approximately 11.1 kVA to deliver 10 kW of real power in that scenario. Knowing the difference between kilowatts and kilovolts and the power factor of your system can save you a lot of trouble.



## Inverter unit kw

---



### [Understanding the 10000W Inverter - Power, Performance, ...](#)

Apr 23, 2025 · Explore the power of a 10000W inverter, learn the difference between kilowatt vs kVA, and find the best setup for your home or solar system.

### [3KW, 6KW, 8KW, and Beyond: Choosing the Right Hybrid Inverter](#)

Apr 3, 2025 · Choose the perfect hybrid inverter--3KW, 6KW, 8KW, or higher--for your energy needs. Compare features, efficiency, and scalability in this guide.



### [Understanding the Difference KW vs KVA and Why It Matters](#)

1 day ago · Understanding the Difference KW vs KVA and Why It Matters When discussing electrical power, two commonly used terms are KW (kilowatts) and KVA (kilovolt-amperes). ...

### [Understanding Inverter Power Ratings: kW vs kVA Explained](#)

4 days ago · kW (kilowatts) measures real power--what actually powers your appliances. kVA (kilovolt-amps) measures apparent power--the total power the inverter handles,





including both ...



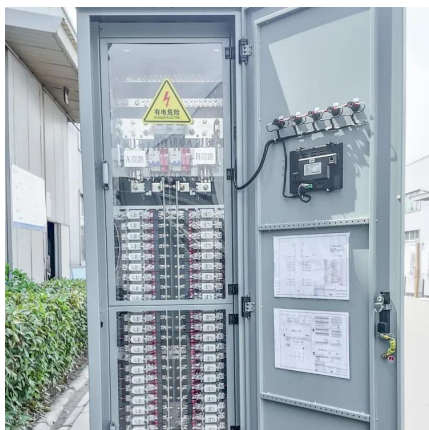
### [Inverter Specifications and Data Sheet](#)

Introducing the S6-EH3P (75-125)K10-NV-YD-H Series, High-voltage. three-phase energy storage for commercial applications. This advanced inverter ...



### [Inverter Specifications and Data Sheet](#)

2 days ago · The article provides an overview of inverter functions, key specifications, and common features found in inverter systems, along with an example of power calculations and ...



### [Inverter Unit Consumption - leaptrend](#)

Sep 12, 2023 · Several factors influence inverter unit consumption, including but not limited to:  
Design and manufacturing quality of the inverter  
Operating temperature and environmental ...



## [Inverter Size Calculator - self2solar](#)

Feb 20, 2025 · Determining the Inverter Size to Match the Solar Panel Array Determining the correct inverter size depends on your solar array's ...



## [What Is the Difference Between Power in KW...](#)

Feb 8, 2024 · KW and KVA are two units of power, but they represent concepts with distinct differences. KW (kilowatts) refers to the actual ...



## [Inverter Size Calculator - self2solar](#)

Feb 20, 2025 · Determining the Inverter Size to Match the Solar Panel Array Determining the correct inverter size depends on your solar array's capacity and your household's power ...



## [What Is the Difference Between Power in KW and KVA in ...](#)

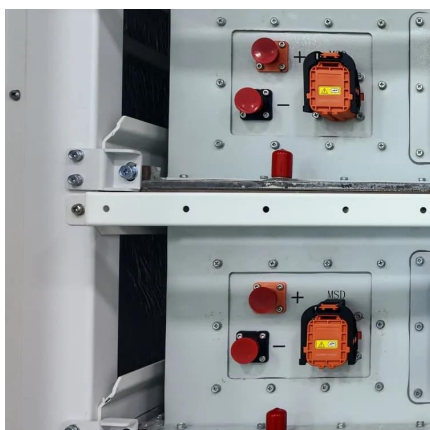
Feb 8, 2024 · KW and KVA are two units of power, but they represent concepts with distinct differences. KW (kilowatts) refers to the actual active power consumed or generated by a ...





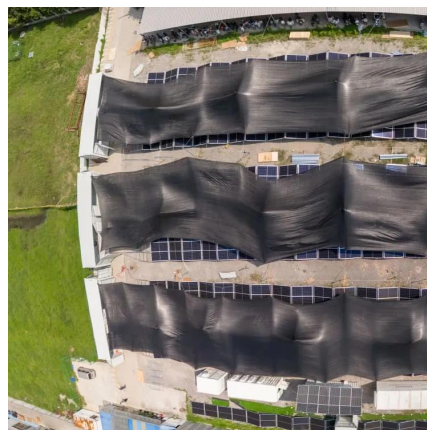
## Do you know the difference between the key parameters of inverter KW

Jul 23, 2025 · In the technical parameter table of the inverter, KW and KVA are the two most common power indicators, but they are often confused by unprofessional designers and users.  
...



## 3KW, 6KW, 8KW, and Beyond: Choosing the ...

Apr 3, 2025 · Choose the perfect hybrid inverter--3KW, 6KW, 8KW, or higher--for your energy needs. Compare features, efficiency, and  
...



## Inverter Unit Consumption - leaptrend

Sep 12, 2023 · Several factors influence inverter unit consumption, including but not limited to:  
Design and manufacturing quality of the inverter  
...



## **Solis 75-125kW C& I High Voltage Energy Storage Inverter\_Hybrid Inverter**

Introducing the S6-EH3P (75-125)K10-NV-YD-H Series, High-voltage. three-phase energy storage for commercial applications. This advanced inverter series boasts a maximum ...



## Contact Us

---

For technical specifications, project proposals, or partnership inquiries, please visit:  
<https://meble-decorator.pl>

### Scan QR Code for More Information



<https://meble-decorator.pl>