

Kathmandu Mobile Power Station Generator Plant





Overview

How to access Jiri power plant in Kathmandu?

Access to the site is by the existing Jiri road 175 kilometres from Kathmandu. The plant is a “run of the river” hydro-electric power generation plant designed for an installed generating capacity of 60,000 kilowatts and annual production of 350 million kilowatt-hours of electrical energy (350 GWh).

How NEA will purchase a 50% share in Khimti Power Plant?

At the end of the first Power Purchase Agreement NEA will purchase a 50% share in the Khimti Power Plant for a nominal fee. The Khimti I Hydropower Project site is located in the Janakpur Zone, Central Development Region, some 100 km east of the Kathmandu. Khimti Khola forms the boundary between Ramechhap and Dolakha Districts.

Who owns Khimti Power Plant?

HPL operates the plant and sells electricity to Nepal Electricity Authority (NEA). The plant will be transferred to GON at the end of the 50 year license period. At the end of the first Power Purchase Agreement NEA will purchase a 50% share in the Khimti Power Plant for a nominal fee.

Who is Shanghai Electric Power Generation Equipment Co Ltd?

(I) Enterprise Profile Shanghai Electric Power Generation Equipment Co Ltd Generator Plant is a joint venture established in December 1995 with Siemens. The enterprise is one of the largest and most advanced power generation equipment suppliers in the world. (ii) Personnel Profile



Kathmandu Mobile Power Station Generator Plant



Multifuel Power Plant

Jan 22, 2020 · This station generated 23.49 GWh of energy in FY 2010/11 and mere 0.62 GWh in FY 2011/12. The major overhauling of engines of all the six units of Multifuel power plant ...

[China-built hydropower plant in Nepal put into operation](#)

Apr 10, 2025 · The Sanjen Khola hydropower station in Nepal, built by a Chinese company, has been put into operation and connected to the national grid, contributing to efforts in alleviating ...

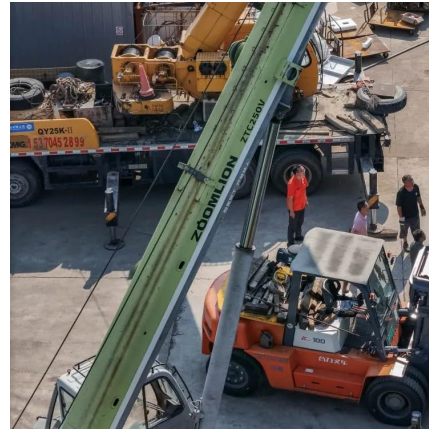


[Top 55 Generator Hire Companies in Kathmandu, Nepal](#)

Search results of Top 55 Generator Hire Companies in Kathmandu, Nepal, near me. Listings are verified with accurate business information.

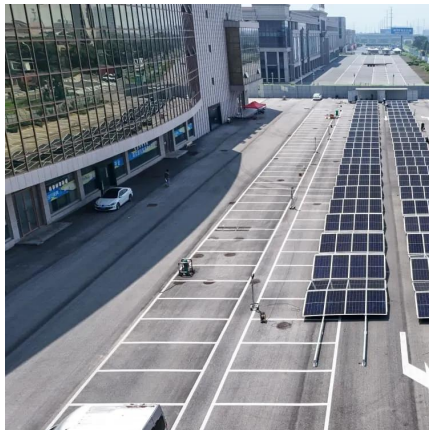
Khimti Power Plant

The plant is a "run of the river" hydro-electric power generation plant designed for an installed generating capacity of 60,000 kilowatts and annual production of 350 million kilowatt-hours of ...



Our Group

Shanghai Electric Power Generation Group is the core industry sector of Shanghai Electric Group, specializes in power generation equipment manufacturing, power generation engineering and ...



[Sanjen Khola78MW Hydropower Station Project -Nepal](#)

Mar 24, 2025 · Sanjen Khola78MW Hydropower Station Project in Nepal is located in Rasuwa District of Bagmati Zone in the central region of Nepal, 170 km away from Kathmandu, the ...



[China-built hydropower plant in Nepal put into operation](#)

This photo taken on March 17, 2025 shows the Sanjen Khola hydropower station in Rasuwa district, Nepal. (China Harbour Engineering Company Ltd./Handout via Xinhua) KATHMANDU, ...





Company Profile

(I) Enterprise Profile Shanghai Electric Power Generation Equipment Co Ltd Generator Plant is a joint venture established in December 1995 with Siemens. The enterprise is one of the largest ...



Khimti Power Plant

The plant is a "run of the river" hydro-electric power generation plant designed for an installed generating capacity of 60,000 kilowatts and ...

[Sanjen Khola Hydropower Station in Nepal was Put into ...](#)

Apr 10, 2025 · On April 9th, the Sanjen Khola Hydropower Station in Nepal, which was surveyed and designed by PowerChina Chengdu, was put into operation for power generation. The ...



Contact Us

For technical specifications, project proposals, or partnership inquiries, please visit:
<https://meble-decorator.pl>



Scan QR Code for More Information



<https://meble-decorator.pl>