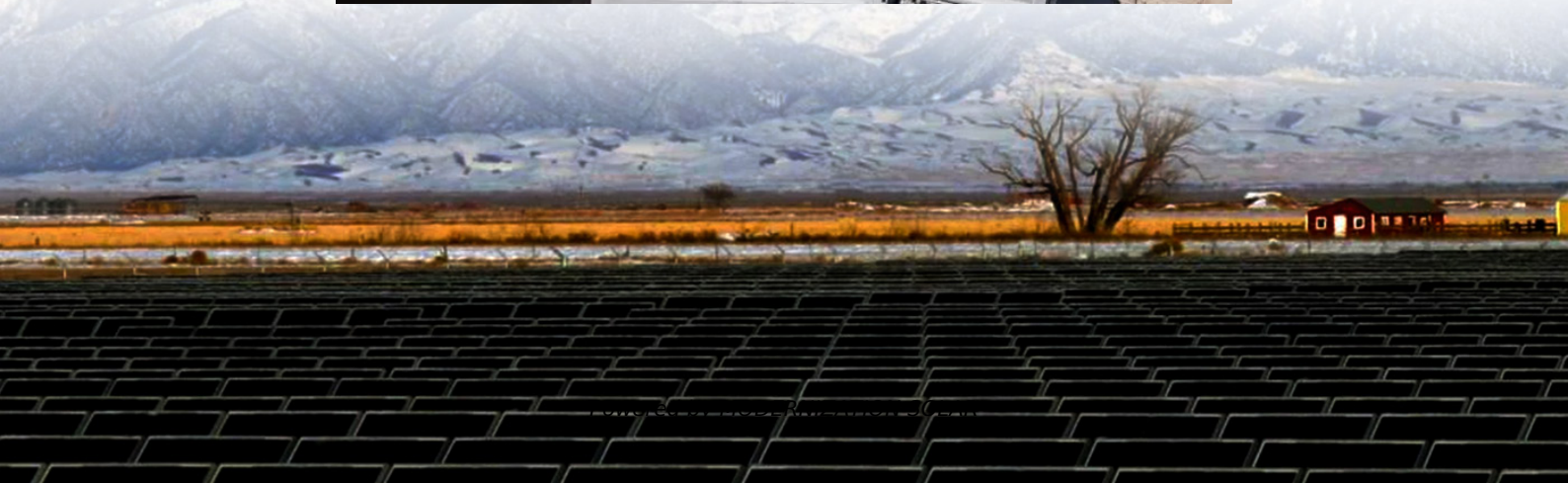


# **Load-bearing requirements for rooftop installation of solar panels**





## Overview

---

Do solar panels add weight to a roof?

**Load-Bearing Capacity:** Solar panels and their mounting systems add weight to a roof. Building codes stipulate the maximum allowable weight that a roof can support, ensuring that the additional load from the solar panels does not compromise the structural integrity of the building.

What are the structural requirements for solar panels?

An essential aspect of the structural requirements for solar panels is the specification of minimum design loads. These ensure the solar panel mounting system will be able to withstand various stressors, such as wind, snow, and seismic activity.

How to install solar panels on a roof?

You need special mounts and flashing to keep water out and prevent leaks. Installing solar panels on a roof needs careful roof penetrations and attachments. This ensures the system works well for a long time and keeps the roof safe. Drilling holes or making changes to the roof is part of the job.

Do you need a roof check before installing solar panels?

A detailed roof check is needed before installing solar panels. Look at the roof's structure, age, and condition. Fix any issues to ensure it can hold the solar system. Discover essential roof requirements for solar panels. Learn about pitch, load capacity, and materials to ensure your home is ready for a solar energy system.



## Load-bearing requirements for rooftop installation of solar panels

---

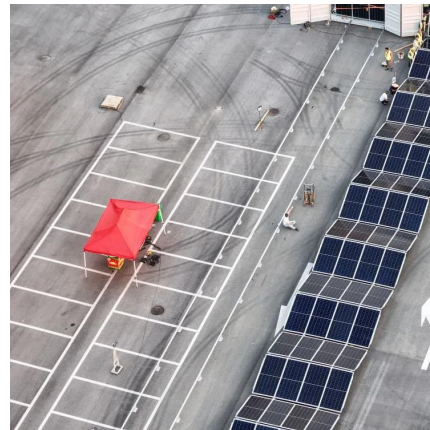


### [Structural Requirements for Solar Panels -- Exactus Energy](#)

Feb 22, 2024 · This comprehensive guide outlines the structural requirements for solar panels and provides an overview on the inner workings of the installation process.

### [What are the load-bearing requirements for ...](#)

s to comply with seismic load requirements in Section 13.6.12. For low-profile systems, the height of the center of mass of any panel above the roof surface must be less than half the least ...



### [Solar Panel Roof Requirements: What You ...](#)

Apr 14, 2024 · Discover essential roof requirements for solar panels. Learn about pitch, load capacity, and materials to ensure your home is ready for ...



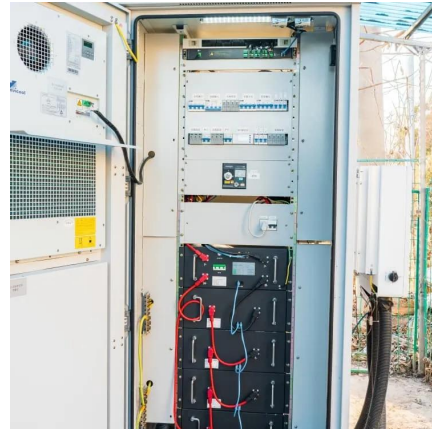
### [How to run a structural load analysis for rooftop PV racking](#)

Sep 9, 2025 · Prevent costly roof failure. This guide details the critical steps for a structural load analysis of PV racking, from wind load calculations to assessing your roof's capacity for





a ...



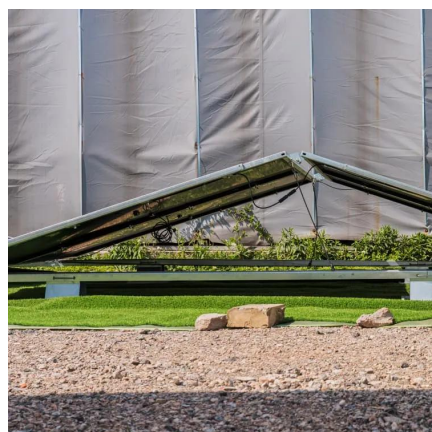
### [Building Codes for Solar Panel Installation](#)

Mar 7, 2025 · Load-Bearing Capacity: Solar panels and their mounting systems add weight to a roof. Building codes stipulate the maximum allowable weight that a roof can support, ensuring ...



### [Solar Panel Roof Requirements: What You Need to Know](#)

Apr 14, 2024 · Discover essential roof requirements for solar panels. Learn about pitch, load capacity, and materials to ensure your home is ready for a solar energy system.



### [What Solar Installers Should Know About](#)

Jul 8, 2024 · Roof load capacity is a critical consideration for solar installers embarking on solar panel installations. By conducting thorough ...



## [Building Codes for Solar Panel Installation](#)

Mar 7, 2025 · Load-Bearing Capacity: Solar panels and their mounting systems add weight to a roof. Building codes stipulate the maximum ...



## [Roof Load Distribution Calculations for Solar Panel Structural ...](#)

May 16, 2025 · New lightweight materials, like flexible solar panels, help reduce the overall weight added to roofs. Additionally, innovative installation techniques, such as rail-less systems, can ...

## [Structural Requirements for Solar Panels , LOTOS 2025](#)

Feb 18, 2025 · Structural Strut Channel Before installing solar panels, conducting precise structural calculations is crucial to ensure stability and durability. These calculations assess ...



## [Structural Engineering for Roof-Mounted ...](#)

6 days ago · Structural Engineering is a small but critical part of the engineering for a rooftop solar project. It can make or break the feasibility ...



## Assessing Your Roof's Load-Bearing Capacity for Solar Panels

Apr 16, 2024 · Spread Out the Weight of the Solar Panels Evenly distributing the weight of solar panels across the roof surface can help optimize load-bearing capacity, reduce stress points, ...



## What Solar Installers Should Know About Roof Load Capacity

Jul 8, 2024 · Roof load capacity is a critical consideration for solar installers embarking on solar panel installations. By conducting thorough assessments, collaborating with structural ...

## Structural Engineering for Roof-Mounted Solar Projects

6 days ago · Structural Engineering is a small but critical part of the engineering for a rooftop solar project. It can make or break the feasibility of the project or have significant effects on the ...



## Contact Us

---

For technical specifications, project proposals, or partnership inquiries, please visit:  
<https://meble-decorator.pl>



## Scan QR Code for More Information



<https://meble-decorator.pl>