

Low-pressure folding container for subway stations





Overview

Traditional open-cut and cast-in-place construction methods for subway stations result in significant social and environmental problems, failing to meet green construction and sustainable development requir.

Why is prefabricated assembly technology important for subway underground stations?

Prefabricated assembly technology has become an important direction for the development of subway underground stations. Comprehensively considering the three factors of stress, waterproof and construction environment, this paper proposes a set of prefabricated and cast-in-place assembly plans for subway stations.

Where is the first fully prefabricated subway station?

The first fully prefabricated subway station, namely, Yuanjidian Station , Changchun city, Jilin province, China, is a single-arch double-layer horseshoe structure with a cover depth of 3.5 m, a total width of 20.5 m, and a total height of 17.45 m.

Do Empty shipping containers clog roads and ports?

Empty shipping containers clog roads and ports. Staxxon's foldable containers -- which can be stacked in bundles -- are one solution to this.

How many prefabricated underground stations are there in China?

China has constructed more than 40 prefabricated underground stations (PUS) since 2012, including Beijing (Liu et al., 2020b), Changchun (Yang and Lin, 2021), Qingdao (Yang, 2021), Shanghai (Zhang et al., 2021b), and Shenzhen (Lin and Peng, 2022).



Low-pressure folding container for subway stations



[Prefabrication technology for underground metro station ...](#)

Feb 1, 2021 · The research and development of this technology for constructing metro stations is of great significance in promoting prefabricated technology in the field of underground structures.

[Foldable shipping containers an answer to port congestion?](#)

Feb 9, 2023 · We design foldable intermodal shipping containers that exceed ISO and CSC standards, and the systems needed to fold them standing upright in bundles, safely and quickly.



[Mechanical performance of a prefabricated subway station ...](#)

May 1, 2023 · Owing to the urgent requirement for trenchless construction of prefabricated subway stations in urban areas, this study proposes a novel green construction method ...



[Low-carbon effects of constructing a prefabricated subway](#)

Oct 3, 2023 · The traditional cast-in-site (CIS) construction method for subway stations has presented significant challenges to the construction industry in light of the growing labor



...



Research on Mechanical Properties and Lightweight ...

Jul 29, 2024 · a subway series In summary, stations, of research domestic prefabricated subway and it stations and prefabricated structures. is meaningful and pilot foreign researchers have ...



Closed cavity thin-walled components of assembled subway station

Mar 18, 2025 · The prefabricated subway station structure adopts closed-cavity thin-walled prefabricated components to make the stress path of the station structural components ...



The design and construction of a large composite subway station ...

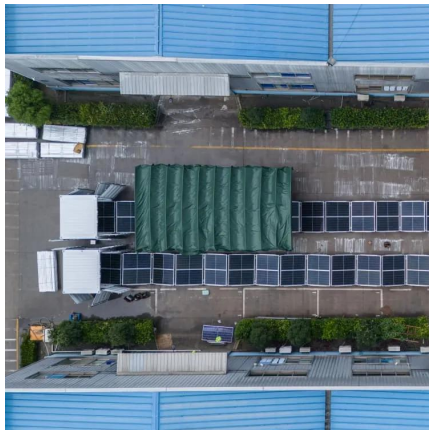
Mar 1, 2021 · Due to the compact space and high utilization demands, the construction of large underground subway transfer station in urban area, like Pengcheng Square station in Xuzhou, ...





Low-carbon effects of constructing a prefabricated subway station ...

Nov 10, 2023 · Take the engineering project of Shapu Station on Shenzhen Metro Line 12 as the research case, this study presents a novel technique for constructing prefabricated subway ...



Discussion On Prefabricated Assembly Plan Of Subway Underground Station

Apr 25, 2021 · Prefabricated assembly technology has become an important direction for the development of subway underground stations. Comprehensively considering the three factors ...

ensu2300015 1..10

Prefabricated subway station construction is causing design engineers to revise their basic thinking. From the structural scheme to construction implementation, there are huge ...



The design and construction of a large ...

Mar 1, 2021 · Due to the compact space and high utilization demands, the construction of large underground subway transfer station in urban area, ...



Contact Us

For technical specifications, project proposals, or partnership inquiries, please visit:
<https://meble-decorator.pl>

Scan QR Code for More Information



<https://meble-decorator.pl>