

Lte base station reports that the board power is off





Overview

Why is LTE TDD transmit on/off power measurement difficult?

The reason why LTE TDD transmit On/Off power measurement is difficult is because both a high power at transmit On and a low power at transmit Off must be input continuously to the signal analyzer.

How LTE TDD base station downlink transmit off power affects quality?

The quality of the LTE TDD base station downlink transmit Off power not only has a direct impact on the uplink communications quality but since there is also a risk of impact on connected systems, sometimes different regions and service operators set stricter standards than the 3GPP specifications.

What are the LTE base station performance (PX) tests?

The LTE base station performance (Px) tests (TS36.141 Chapter 8) are described in Application Note 1MA162. The R&S® SMW200A vector signal generator is referred to as the SMW. The R&S® SMBV100A vector signal generator is referred to as the SMBV. The R&S® FSV spectrum analyzer is referred to as the FSV.

What is LTE Band 46?

LTE band 46 is the unlicensed band for Licensed Assisted Access (LAA). The DUT (base station) transmits at the declared maximum PRAT. N-TM is required. Under CP/ACLR CONFIG, set the corresponding parameters. The measurement for single carrier scenarios automatically takes data such as the bandwidth and spacing from the signal description.



Lte base station reports that the board power is off



[LTE-A Base Station Transmitter Tests](#)

Dec 17, 2019 · Transmitter OFF power is defined as the mean power measured over 70 us filtered with a square filter of bandwidth that is equal to the transmission bandwidth configuration of ...

[Test the ON/OFF power of your TD-LTE base station](#)

Dec 11, 2023 · Test the ON/OFF power of your TD-LTE base station The R& S®FSW signal and spectrum analyzer provides the high dynamic range needed to accurately measure the ...



[LTE TDD Base Station Transmit On/Off Power Measurement ...](#)

Feb 22, 2019 · PDF LTE TDD Base Station Transmit On/Ofent Application Note.pdf
Download , Preview 1.7 MB Brand of Product: ANRITSU Part#: MS2690A ? MS2691A ? MS2692A ? ...

[LTE-A Base Station Transmitter Tests](#)

Apr 21, 2022 · The rated output power (PRAT) of the base station is the mean power level per carrier for BS operating in single carrier, multicarrier, or carrier aggregation configurations that ...



LTE Base Station (eNB) Transmitter and Component Test

May 29, 2024 · The transmit ON/OFF power conformance test -- also known as the power-versus-time measurement -- found in the 3GPP Technical Specification 36.141, test case 6.4, ...



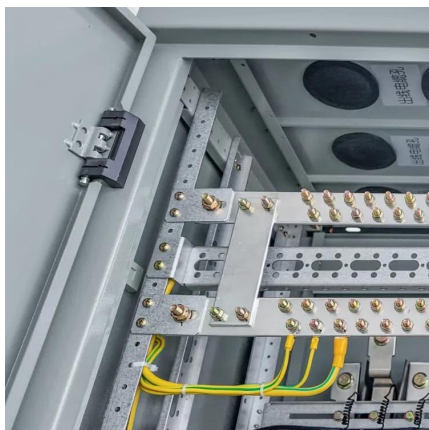
Test the ON/OFF power of your TD-LTE base station

TD-LTE base stations need to pass two transmit ON/OFF power tests defined in chapter 6.4 of the 3GPP TS 36.141 technical specification:
Transmitter OFF power The purpose of the ...



E-UTRA Base Station Transmit ON/OFF Power Measurement

See how Keysight's N9082A LTE TDD Measurement Application makes standards-compliant E-UTRA base station transmit ON/OFF power measurements.





LTE Over-The-Air Testing for Base Stations with R& S®FSH

Sep 1, 2013 · This application note explains how to perform LTE base station measurements over the air (OTA) using the R& S®FSH4/8/13/20 handheld spectrum analyzer. It describes the ...

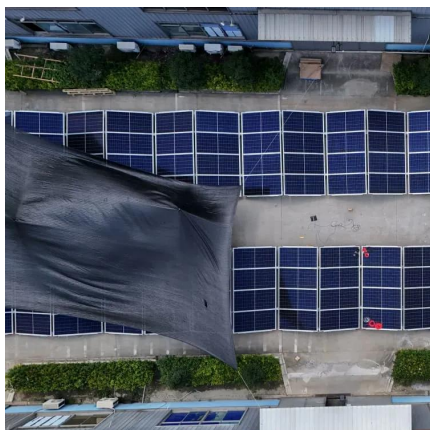


TS 137 107

Sep 10, 2021 · 1) Set the base station to transmit a signal according to E-TM 1.1 at manufacturer's declared rated output power with corresponding channel bandwidth (i.e. 10 MHz or 20 MHz) ...

E-UTRA Base Station Transmit ON/OFF Power ...

See how Keysight's N9082A LTE TDD Measurement Application makes standards-compliant E-UTRA base station transmit ON/OFF power ...



LTE TDD Base Station Transmit On/Off Power ...

Apr 26, 2016 · This document explains transmit On/Off power measurements of LTE TDD base stations using the Anritsu Signal Analyzer MS269xA series running the LTE TDD Downlink ...



Contact Us

For technical specifications, project proposals, or partnership inquiries, please visit:
<https://meble-decorator.pl>

Scan QR Code for More Information



<https://meble-decorator.pl>