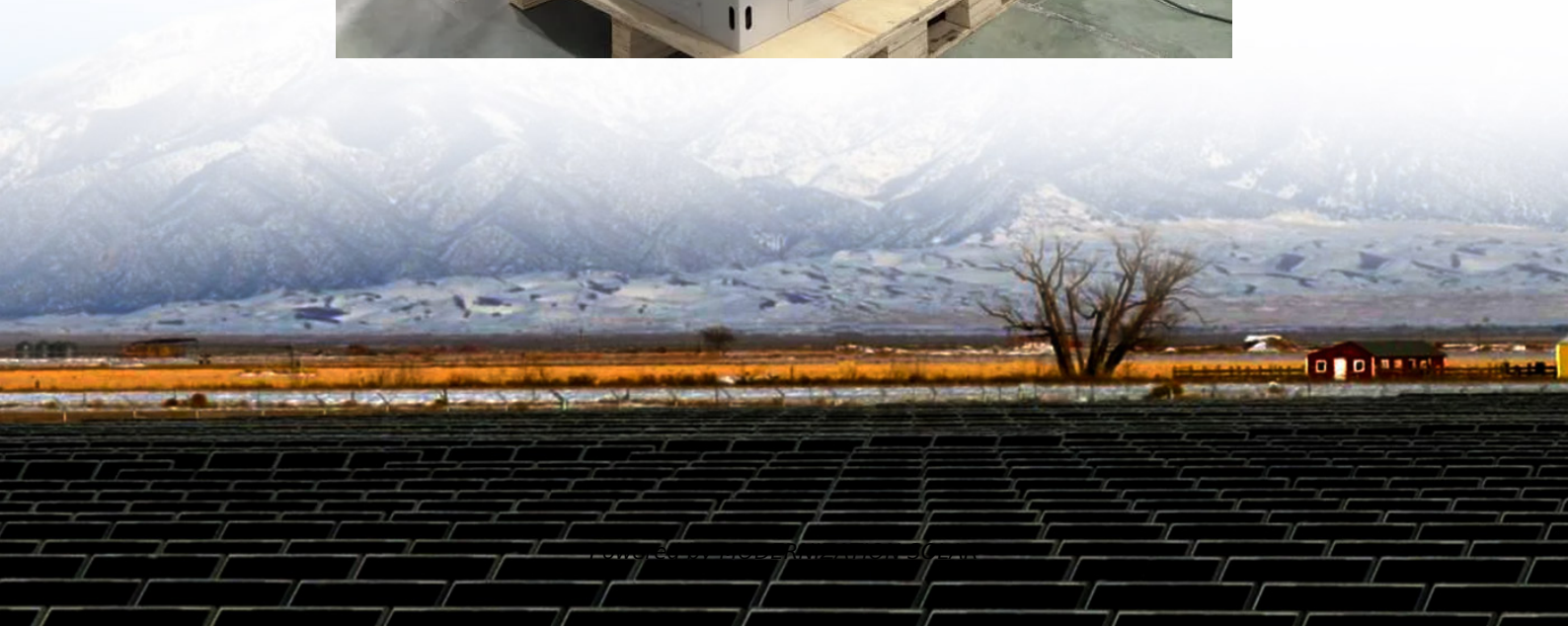


Maximum solar wattage per 10 square meters





Overview

What is solar panel watts per square meter (W/M)?

Solar panel watts per square meter (W/m) measures the power output of a solar panel based on its size. Compare solar panels to see which generates most electricity per square meter. A higher W/m value means a solar panel produces more power from a given area. This can help you determine how many solar panels you need for your energy needs.

How much energy does a solar panel produce per square meter?

Given Egypt's high solar irradiance levels, which can reach up to 2200 kWh/m² annually, the potential power output per square meter of a solar panel can be quite significant. For a solar panel with an efficiency of 18%, this translates to an annual energy production of about 396 kWh/m². 1. Choosing the Right Panel.

How many watts can a solar panel generate?

This means that for every square meter of this solar panel, you can generate 180 watts of power under optimal conditions. Panel Orientation and Tilt: The angle at which the panel is installed can significantly affect its efficiency. Solar panels should be oriented to face the sun as directly as possible throughout the day.

How do you calculate solar power output per square meter?

To calculate the power output of a solar panel per square meter, you can use the following formula: Power Output (W/m²) = Efficiency × Solar Irradiance (W/m²) Efficiency: This is the panel's efficiency rating, typically provided by the manufacturer. Solar Irradiance: The power per unit area received from the Sun, usually measured in W/m².



Maximum solar wattage per 10 square meters



[Solar Energy Per Square Meter: How Much Power Can You ...](#)

Mar 2, 2025 · The average solar energy received per square meter varies widely across regions, influenced primarily by local sunlight exposure and climate conditions. Energy planners must ...

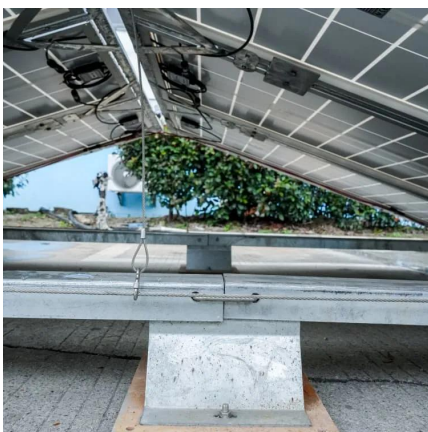
[Solar Power per Square Meter Calculator](#)

Nov 17, 2023 · Solar Power per Square Meter Calculator: It's used to calculate the amount of solar intensity received by the solar panels.



[Solar Energy Generation Per Square Metre: A ...](#)

Mar 19, 2025 · With the rising demand for renewable energy, solar panels for home have become a popular choice for homeowners looking to reduce ...



[Solar Energy Generation Per Square Metre: A Complete Guide](#)

Mar 19, 2025 · With the rising demand for renewable energy, solar panels for home have become a popular choice for homeowners looking to reduce electricity bills and contribute



to a ...

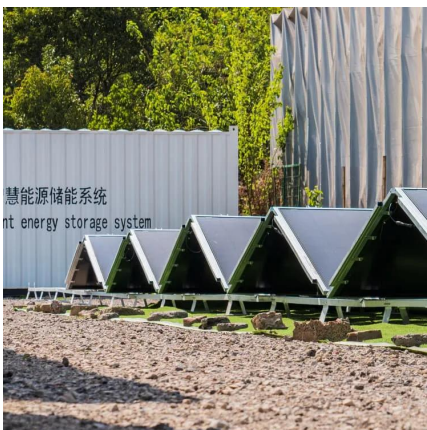


Solar Panel Power Per Square Meter: How to ...

Jul 16, 2025 · Final Words Calculating the solar panel power per square meter is an essential step in understanding the efficiency and potential of ...

Solar Panel Wattage Calculation: How To ...

Master solar panel wattage calculation & efficiency formulas. Complete 2025 guide for US installers & EPCs. Get it now!



How many watts per square meter is the top solar energy?

Jul 28, 2024 · The maximum wattage per square meter for solar energy generation is approximately 1000 watts, depending on location and conditions, 2. Solar panels' efficiency ...



[How many watts per square meter is the top ...](#)

Jul 28, 2024 · The maximum wattage per square meter for solar energy generation is approximately 1000 watts, depending on location and ...



[Solar Panel Output Per Square Meter](#)

Apr 30, 2025 · Discover how much electricity solar panels generate per square meter, explore efficiency factors, technology comparisons, and future innovations in photovoltaic energy.

[Solar Power per Square Meter Calculator](#)

Solar Panel Output CalculatorSolar Panels Kwh CalculatorSolar Panel Area Per KwWattage is the output of solar panelsthat is calculated by multiplying the volts by amps. Here, the amount of the force of the electricity is represented by volts. The aggregate amount of energy used is expressed in amps (amperes). Output ratings on most solar panels range between 250 watts to 400 watts.See more on energytheory Solar Earth Inc



Solar Panel Watts Per Square Meter Explained

Learn how to measure solar panel efficiency using solar panel watts per square meter with this comprehensive guide.

Photovoltaics



Photovoltaics - Watts per Area Calculator for the achievable power of a photovoltaic system on a certain area. Solar cells can generate 200 watts (watt-peak, Wp) per square meter. This is the ...

[Solar Panel Output Per Square Meter](#)

Apr 30, 2025 · Discover how much electricity solar panels generate per square meter, explore efficiency factors, technology comparisons, and ...



How many watts of solar energy can be installed in 10 square meters

Sep 7, 2024 · Regions receiving ample sunlight facilitate the maximum wattage, while cloudy or shaded areas may reduce output considerably. The solar insolation value, or average solar ...

[Solar Panel Wattage Calculation: How To Calculate In 2025?](#)

Master solar panel wattage calculation & efficiency formulas. Complete 2025 guide for US installers & EPCs. Get it now!





[Solar Panel Power Per Square Meter: How to Calculate ...](#)

Jul 16, 2025 · Final Words Calculating the solar panel power per square meter is an essential step in understanding the efficiency and potential of solar energy systems. By considering factors ...

[Solar Panel Watts Per Square Meter Explained](#)

Learn how to measure solar panel efficiency using solar panel watts per square meter with this comprehensive guide.



Contact Us

For technical specifications, project proposals, or partnership inquiries, please visit: <https://meble-decorator.pl>

[Scan QR Code for More Information](#)



<https://meble-decorator.pl>