

Metal clad switchgear factory in New-Zealand





Overview

Who is Western switchgear?

We provide a full-service solution for the design, manufacturing and installation of electrical control systems and electrical switchboards throughout New Zealand. Formed in 1985, Western Switchgear answered a need for high quality, custom built, low voltage switchboards, motor control centres, and control & distribution panels.

Who makes Bray switchgear?

New Zealand Electrical Traders Ltd (NZET) are manufacturers of Bray Switchgear. We are recognized Industry Leaders in Industrial and Commercial Switchgear Design & Manufacture. NZET has been manufacturing switchgear in Tauranga since 1993. We are located in Tauranga, Bay of Plenty, New Zealand.

Where can I find the best switchgear in NZ?

For the best range of switchgear in NZ, talk to BREMCA. Eaton is a power management company made up of over 97,000 employees, doing business in more than 175 countries. Our energy-efficient products and services help our customers effectively manage electrical, hydraulic and mechanical power more reliably, efficiently, safely and sustainably.

Where is bremca switchgear made?

Our extensive range of quality switchgear is sourced from the world's best brands and includes bespoke solutions manufactured right here in New Zealand. BREMCA has a significant investment in electrical switchgear and associated componentry that is stocked across the various BREMCA entities.



Metal clad switchgear factory in New-Zealand

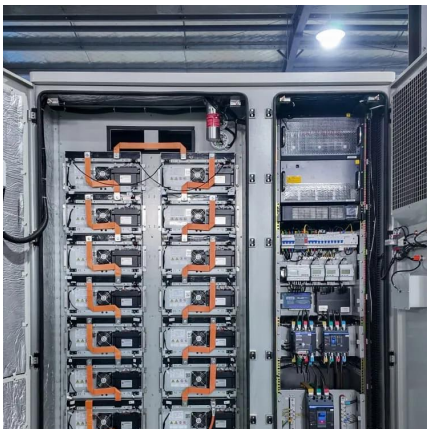
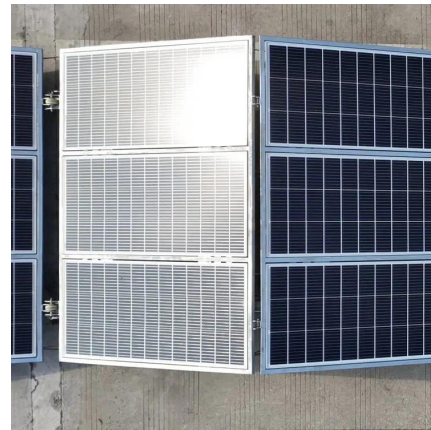


Western Switchgear Ltd

We provide a full-service solution for the design, manufacturing and installation of electrical control systems and electrical switchboards ...

NZET Switchgear

2 days ago · NZET delivers industrial and commercial electrical switchgear solutions across New Zealand, from custom switchboards to controlgear.



[Switchboards, Switchgear and Automation Solutions](#)

Since 1972, Bremca, the largest company of its type in the New Zealand market, has led the way in electrical switchboards, switchgear and automation solutions. Trusted for its innovation, ...

Metal-Clad Switchgear

Metal-Clad Switchgear Overview Metal-Clad Switchgear is a high-performance, fully enclosed electrical distribution solution designed to provide enhanced protection, reliability, and ...



Industrial & Commercial Switchgear New Zealand , LECO Switchgear

Formed originally as Lynn Electrical in 1973, LECO Switchgear has become New Zealand's leading manufacturer and supplier of industrial & commercial switchgear and control panels to ...



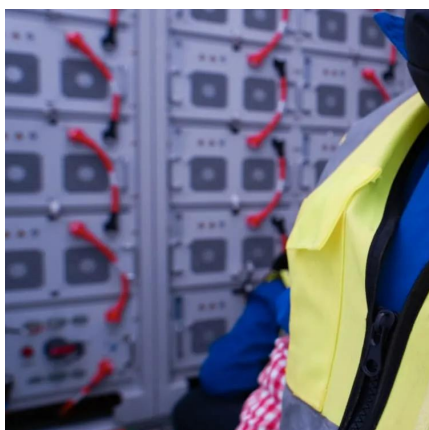
Switchgear Designed for Harsh Environments

Industrial switchgears are usually exposed to harsh conditions like extreme temperatures. The Wilco Metal is built to last with its highly durable design.



Switchgear Control Panels & Switchgear

BREMCA's extensive range of quality switchgear includes bespoke solutions manufactured in New Zealand, as well as switchgear imported from the ...





Home , TLJ Switchgear

TLJ Switchgear delivers high-quality electrical switchgear solutions across New Zealand, specialising in custom design, manufacturing, and servicing for all industries.



Western Switchgear Ltd

We provide a full-service solution for the design, manufacturing and installation of electrical control systems and electrical switchboards throughout New Zealand. Formed in 1985, Western ...

[Switchgear Control Panels & Switchgear Solutions » Bremca](#)

BREMCA's extensive range of quality switchgear includes bespoke solutions manufactured in New Zealand, as well as switchgear imported from the world's best brands.



[Top 100 Switchgear Manufacturers in New Zealand \(2025\)](#)

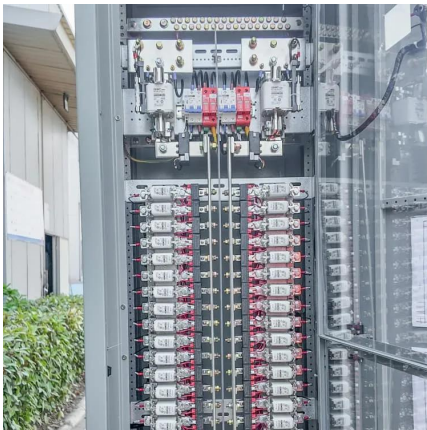
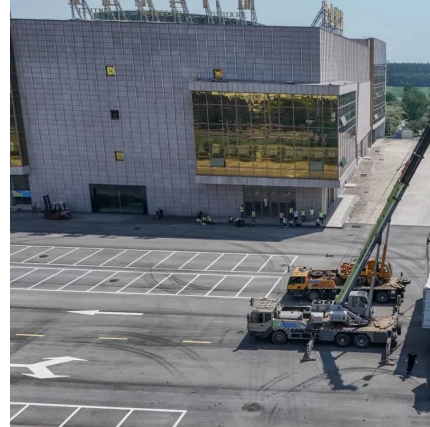
Top Switchgear Manufacturers in New Zealand
The B2B platform for the best purchasing decision. Identify and compare relevant B2B manufacturers, suppliers and retailers



Industrial & Commercial Switchgear New

...

Formed originally as Lynn Electrical in 1973, LECO Switchgear has become New Zealand's leading manufacturer and supplier of industrial & ...



Switchboards

Clive Wilson Switchboards has a reputation for reliable and quality electrical switchboard manufacturing throughout New Zealand and abroad, With over 50 years' experience in the ...

Contact Us

For technical specifications, project proposals, or partnership inquiries, please visit:
<https://meble-decorator.pl>

Scan QR Code for More Information



<https://meble-decorator.pl>