

Normal range of battery cabinet charging current





Overview

The normal charging current for a battery varies based on its type and capacity, but it is generally recommended to charge lead-acid batteries at about 10% to 15% of their amp-hour rating, while lithium-ion batteries can typically handle up to 50% of their capacity as charging current. How to calculate battery charging time?

Below are the formulas for calculating the required battery charging time (in hours) and the necessary charging current (in amperes): Charging Time of Battery = Battery Ah \div Charging Current $t = Ah \div A$ and Required Charging Current for battery = Battery Ah \times 10% $A = Ah \times 10\%$ Where: t = Time in hrs.

How long does it take to charge a battery?

Typical charging current: 0.1C to 0.3C Charging time: 6–12 hours Efficiency: ~80% Typical charging current: 0.5C to 1C Charging time: 1–3 hours Efficiency: ~95% Typical charging current: 0.5C Charging time: 2–4 hours Efficiency: ~90% Tips to Optimize Charging Current and Time.

What is charging current & charging time?

Charging current is the rate at which electrical energy is delivered to a battery. It's typically measured in amperes (A). This value depends on the battery's capacity and the charger's output. What Is Charging Time?

Charging time refers to the duration it takes to fully replenish a battery from a given state of charge (SOC) to 100%.

What is a good charge rate for a battery?

2C Charge Rate: Charging the same battery at 4000mA ($2 \times$ capacity). Charging too quickly can generate heat, which can damage the battery or reduce its lifespan. Most batteries have a recommended maximum charge rate, often around 1C. Pro Tip: If you need faster charging, look for batteries specifically designed for high C-rates. Part 4.



Normal range of battery cabinet charging current

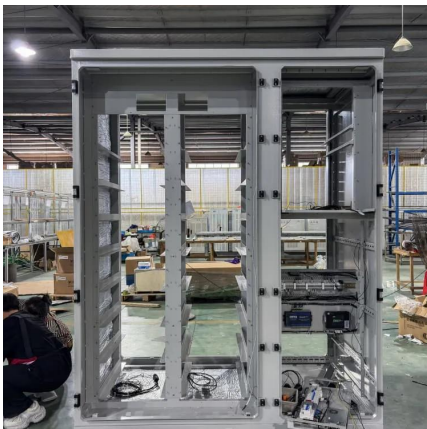


[Battery charger basics , Chargetek](#)

Jun 27, 2016 · Battery charger basics A battery charge cycle describes the voltage and current relationship in a battery as the charger returns the ...

[Guide to Calculating Battery Charging Current ...](#)

Jun 25, 2025 · Why Calculating Charging Current and Time Matters Accurate calculation of Charging Current and Time ensures that batteries are ...



[How to Calculate Battery Charging Time and ...](#)

2 days ago · Simple Battery Charging Time and Current Formula for Batteries (with 120Ah Battery Example) In this simple tutorial, we will explain how to ...

[Guide to Calculating Battery Charging Current and Time](#)

Jun 25, 2025 · Why Calculating Charging Current and Time Matters Accurate calculation of Charging Current and Time ensures that batteries are charged within their safe operating



...



Car Battery Charging Voltage And Current: ...

Aug 23, 2025 · Neutralize spills with baking soda. It neutralizes battery acid safely. Dispose of waste materials properly. Keep a spill kit nearby. Quick ...

How to Calculate Battery Charging Time and Current?

2 days ago · Simple Battery Charging Time and Current Formula for Batteries (with 120Ah Battery Example) In this simple tutorial, we will explain how to determine the appropriate battery

...



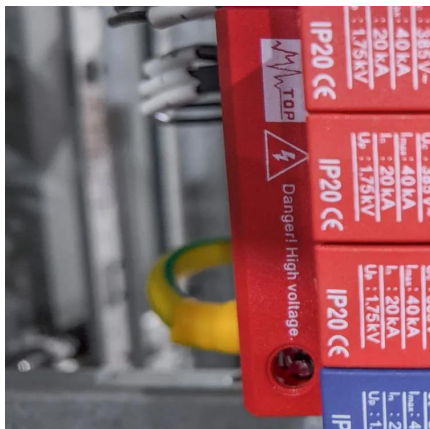
Understanding Optimal Battery Charging Current for ...

Sep 24, 2025 · The optimal battery charging current balances speed and safety, typically between 0.5C and 1C for lithium-ion batteries. Exceeding this range risks overheating and capacity ...



What is the normal charging current for a battery?

Jan 2, 2025 · The normal charging current for a battery varies based on its type and capacity, but it is generally recommended to charge lead-acid batteries at about 10% to 15% of their amp ...



The effects of fast and normal charging, driving cycle, and a ...

Dec 1, 2023 · The study includes the modeling of an electric vehicle battery pack to simulate the effects of different driving cycles, charging conditions, environmental conditions, and fast and ...

Battery Charging & Discharging: 10 Key

...

Mar 19, 2025 · Confused about battery performance? We break down 10 vital battery charging and discharging parameters. Optimize your battery life ...



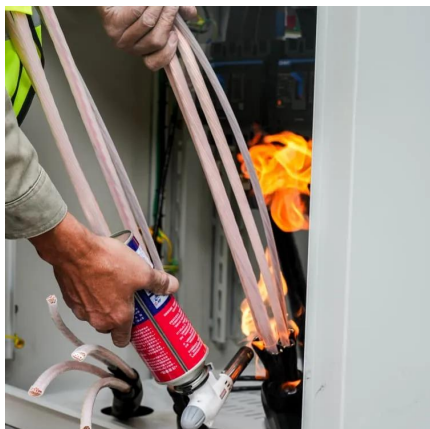
Battery Charging & Discharging: 10 Key Parameters Explained

Mar 19, 2025 · Confused about battery performance? We break down 10 vital battery charging and discharging parameters. Optimize your battery life today!



[Battery Charging Calculator - IEC & IEEE Standards](#)

Apr 19, 2025 · Battery charging calculations ensure safe, efficient, and reliable energy storage performance across industrial, renewable, and transportation applications. IEC and IEEE ...

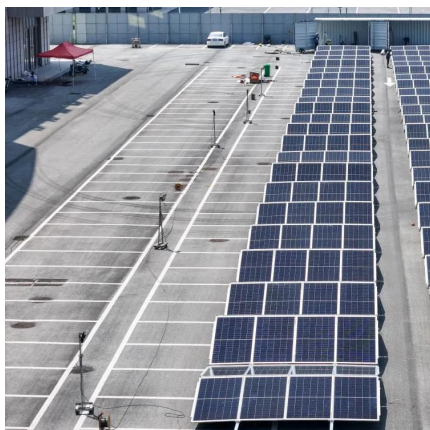


[What is Normal Battery Voltage for a Car: ...](#)

Sep 7, 2025 · Normal battery voltage for a car typically ranges from 12.4 to 12.6 volts when fully charged. A reading below 12 volts may indicate a ...

[Battery charging and storage cabinet](#)

The storage and charging cabinet is designed to safely store and charge lithium-ion batteries. It is primarily intended for batteries for bicycles, ...



[Correct charging current for lithium-ion batteries](#)

Nov 3, 2018 · CC/CV charging means that it begins by providing a constant current until the voltage hits a preset level, then switches to that constant voltage until the current trickles down ...



UPS Battery Sizing

Apr 8, 2012 · A long term discharge battery can be recharged to 85% capacity in a minimum of 8 hours provided the charger is sized properly. Assuming the UPS is float charging, the following ...



Car Battery Voltage Chart

Mar 4, 2024 · Car battery voltage typically ranges from 12.6 to 14.4 volts, with the alternator charging the battery while the engine runs. Monitoring ...

[What is the normal charging current for a ...](#)

Jan 2, 2025 · The normal charging current for a battery varies based on its type and capacity, but it is generally recommended to charge lead-acid ...



[Charging current - calculation and related ...](#)

Dec 25, 2022 · What does charging current of a battery mean? This article is aimed to help you get a firm understanding of batteries charging current.



[Understanding the Lithium-Ion Battery Charging Cabinet: ...](#)

Nov 21, 2025 · Lithium-ion batteries power nearly every modern industry--from consumer electronics and electric tools to robotics, energy storage, and logistics. As their applications ...



[Battery cabinet charging current and voltage changes](#)

Nov 21, 2025 · Charging Termination: The charging process is considered complete when the charging current drops to a specific predetermined value, often around 5% of the initial ...



[Battery Charging Calculator - IEC & IEEE ...](#)

Apr 19, 2025 · Battery charging calculations ensure safe, efficient, and reliable energy storage performance across industrial, renewable, and ...



[Peak vs average maximum charging current for li-ion battery](#)

Jan 15, 2024 · I'm working on a circuit for charging 18650 battery packs. I know that for the longest battery life possible, 18650 batteries should be charged at & It; 1C during the constant ...



What is the normal value of the battery cabinet charging ...

Nov 15, 2025 · As a general rule of thumb, the charging current should be ? 10% of the battery's Ah rating. Therefore, Charging Current for 120Ah Battery = $120 \text{ Ah} \times (10 \div 100) = 12 \dots$



Contact Us

For technical specifications, project proposals, or partnership inquiries, please visit:
<https://meble-decorator.pl>

Scan QR Code for More Information



<https://meble-decorator.pl>