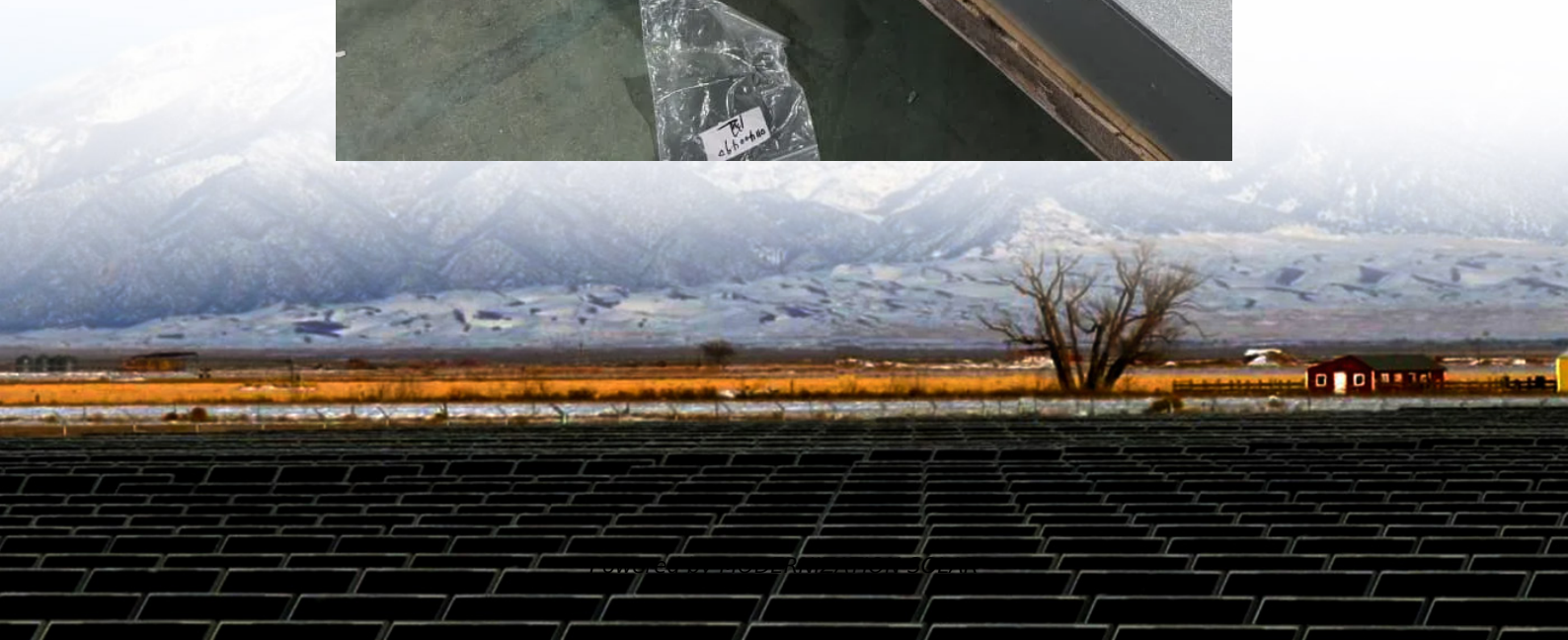


Relationship between base stations and mobile communications





Overview

What is a base station in a telecommunications network?

A base station is a critical component in a telecommunications network. A fixed transceiver that acts as the central communication hub for one or more wireless mobile client devices. In the context of cellular networks, it facilitates wireless communication between mobile devices and the core network.

Why are base stations important in cellular communication?

Base stations are important in the cellular communication as it facilitate seamless communication between mobile devices and the network communication. The demand for efficient data transmission are increased as we are advancing towards new technologies such as 5G and other data intensive applications.

Why are base stations important?

Base stations are the backbone of wireless communication networks, playing a pivotal role in signal transmission, network reliability, and high-speed data connectivity. As technology evolves, the importance of base stations will continue to grow, addressing new challenges and supporting the ever-expanding demand for wireless communication services.

What are base stations & cell towers?

These structures facilitate the transmission and reception of signals between mobile devices and the wider network, enabling voice calls, text messages, and data services. Understanding the role and technology behind base stations and cell towers is key to appreciating how mobile networks operate and evolve to meet growing demands. Base Stations



Relationship between base stations and mobile communications

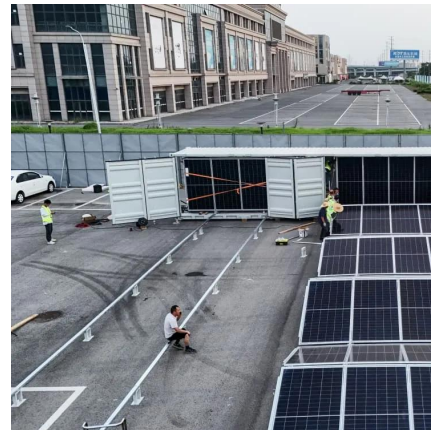


The Base Station in Wireless Communications: ...

Nov 10, 2023 · Base station, also known as BTS (Base Transceiver Station), is a key device in wireless communication systems such as GSM. ...

What is a Base Station in Telecommunications?

What is a Base Station? A base station is a critical component in a telecommunications network. A fixed transceiver that acts as the central communication hub for one or more wireless mobile ...



Base Stations

Jul 23, 2025 · The present-day tele-space is incomplete without the base stations as these constitute an important part of the modern-day scheme of wireless communications. They are ...

Understanding Base Stations: The Backbone of Wireless Communication

Jan 6, 2025 · Conclusion Base stations are the backbone of modern wireless communication networks. They ensure that mobile devices can



connect to the internet, make calls, and send ...



What is a Base Station in ...

What is a Base Station? A base station is a critical component in a telecommunications network. A fixed transceiver that acts as the central ...



Base Stations: The Core and Future of Telecom Networks

Sep 12, 2025 · Signal Coverage and Connectivity: Base stations broadcast signals to create a circular signal coverage area. By strategically positioning base stations, telecom providers ...



The Base Station in Wireless Communications: The Key to ...

Nov 10, 2023 · Base station, also known as BTS (Base Transceiver Station), is a key device in wireless communication systems such as GSM. Equipped with an electromagnetic wave ...





[Understand Cellphone Basestation Technology » Electronics ...](#)

The base station is the most visible element of a mobile or cellular telecommunications network. These cell phone base stations can take many formats, but they are characterised by the ...



Base Stations

Jul 23, 2025 · The present-day tele-space is incomplete without the base stations as these constitute an important part of the modern-day scheme ...



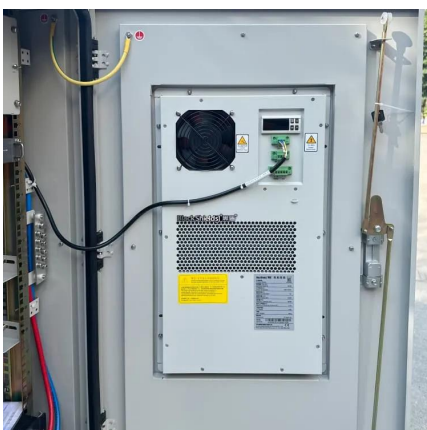
[Understand Cellphone Basestation ...](#)

The base station is the most visible element of a mobile or cellular telecommunications network. These cell phone base stations can take ...



What Is A Base Station?

Apr 22, 2024 · A base station is an integral component of wireless communication networks, serving as a central point that manages the transmission and reception of signals between ...





What Is the Role of a Base Station in Wireless Communication?

Jun 27, 2025 · Base stations are the backbone of wireless communication networks, playing a pivotal role in signal transmission, network reliability, and high-speed data connectivity. As ...



Base Stations and Cell Towers: The Pillars of Mobile ...

May 16, 2024 · Base stations and cell towers are critical components of cellular communication systems, serving as the infrastructure that supports seamless mobile connectivity. These ...

Understanding Base Stations in Mobile Communication

Nov 21, 2025 · Explore the essential role of base stations in mobile communications. Understand their design, technology, and the shift to 5G ?. Discover the future impact and sustainability ...



Contact Us

For technical specifications, project proposals, or partnership inquiries, please visit:
<https://meble-decorator.pl>



Scan QR Code for More Information



<https://meble-decorator.pl>