

Single-glass and double-glass module conversion rate





Overview

What is a double glass module?

Double glass module contains two sheets of glass, whereby the back sheet is made of heat strengthened (semi-tempered) glass to substitute the traditional polymer backsheet. With * Corresponding author. Tel.: +86 13776101913; fax: +86 51268961413.

What is double glass photovoltaic module?

Preface To further extend the service life of photovoltaic modules, double glass photovoltaic module has recently been developed and studied in the PV community. Double glass module contains two sheets of glass, whereby the back sheet is made of heat strengthened (semi-tempered) glass to substitute the traditional polymer backsheet.

Are double-glass modules better than single-sided glass panels?

However, advancements in glass technology have mitigated this issue to some extent. Weight: Double-glass modules are generally heavier than single-sided glass panels due to the additional glass layer. Applications: Double-glass modules are well-suited for environments with harsh weather conditions, high humidity, or corrosive elements.

What is the encapsulation reliability risk of double glass module?

The double glass module is superior to the conventional single glass module, which indicates that the encapsulation reliability risk of double glass module is good without delaminating risk. 90 Jing Tang et al. / Energy Procedia 130 (2017) 87–93 4 J. Tang et al./ Energy Procedia 00 (2017) 000–000 Fig. 3.



Single-glass and double-glass module conversion rate



[The Difference Between Double-glass and ...](#)

Aug 17, 2023 · The main difference between double-glass photovoltaic modules and single-sided glass solar panels lies in their construction and ...

Experimental investigation on the combustion performance of single

Jun 15, 2025 · Under similar glass material conditions, double-glazed modules exhibited superior combustion performance compared to their single-glass counterparts. Therefore, locations ...



[Single vs. double glass solar panels - which is ...](#)

Jan 2, 2025 · In Kiwa PVEL's 2024 Scorecard, hail test results showed that 3.2mm fully tempered glass/backsheet solar modules were significantly ...



The Difference Between Single Glass Solar Modules And Double Glass

However, it is important to consider the long-term benefits of dual-glass modules' enhanced durability and performance, which may exceed



the initial investment for some consumers. The ...

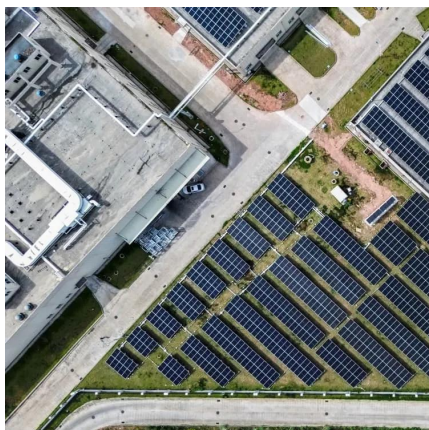


Single-glass versus double-glass: a deep dive into module ...

Oct 2, 2024 · Left: a double-glass module; right, a bifacial single-glass module. The wave of industrial consolidation is growing ever more pronounced, shaping the landscape with each ...

The Difference Between Double-glass and Single-sided Glass ...

Aug 17, 2023 · The main difference between double-glass photovoltaic modules and single-sided glass solar panels lies in their construction and design, which can impact their durability, ...



Single-glass and double-glass module conversion rate

What is a double glass module? Double glass module contains two sheets of glass, whereby the back sheet is made of heat strengthened (semi-tempered) glass to substitute the traditional ...



The Performance of Double Glass Photovoltaic Modules ...

Sep 1, 2017 · In recent years, with the rapid development of the photovoltaic industry, double glass module as a high reliability and high weather resistance product is favored by many PV ...

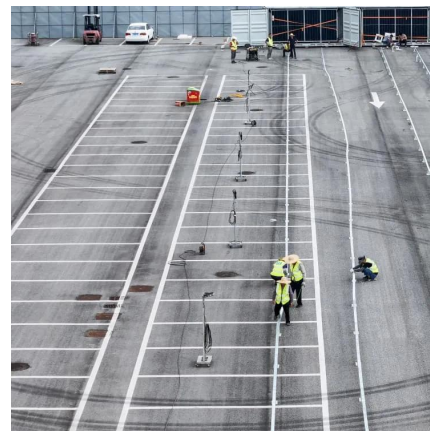


Presentation

Jun 1, 2023 · (e.g. over-torqueing) Weight
Currently, glass-glass modules ($\sim 15.2 \text{ kg/m}^2$) are about 35-40% heavier per unit area than glass-backsheet modules ($\sim 11.3 \text{ kg/m}^2$)*
Almaden ...

Glass/Glass Photovoltaic Module Reliability ...

Aug 3, 2021 · Abstract and Figures Glass/glass (G/G) photovoltaic (PV) module construction is quickly rising in popularity due to increased ...



Glass/Glass Photovoltaic Module Reliability and Degradation: ...

Aug 3, 2021 · Abstract and Figures Glass/glass (G/G) photovoltaic (PV) module construction is quickly rising in popularity due to increased demand for bifacial PV modules, with additional ...



TOPCon Bifacial Single Glass Encapsulation Solution

Sep 6, 2024 · single glass module can release acetic acid produced by the encapsulation film inside the module because of its breathing function, and the outdoors use reliability is better; ...



Single vs. double glass solar panels - which is better?

Jan 2, 2025 · In Kiwa PVEL's 2024 Scorecard, hail test results showed that 3.2mm fully tempered glass/backsheet solar modules were significantly less susceptible to glass breakage than ...

Contact Us

For technical specifications, project proposals, or partnership inquiries, please visit:
<https://meble-decorator.pl>

Scan QR Code for More Information



<https://meble-decorator.pl>