

Solar panel 580 watts negative and positive connection





Overview

What is a series solar panel wiring configuration?

Proper solar panel connection ensures the system can safely and efficiently deliver that power to loads or the grid. A series solar panel wiring configuration connects the positive terminal of one solar panel to the negative terminal of the next. This increases total voltage while keeping current constant.

What is the difference between a series and a parallel solar panel?

In a series connection, the positive terminal of one solar panel connects to the negative terminal of the next. This increases the total system voltage while the current remains the same. In a parallel configuration, all positive terminals are connected together, and all negative terminals are joined.

What does polarity mean on a solar panel?

Let's look at what the word polarity means. Polarity essentially means that the generator has positive charges on one side and negative charges on the other. The voltage difference allows electric currents to flow from one end of the wire to the other. You need a voltmeter or multimeter if you want to check the polarity of your solar panel.

What is a series connected solar panel?

Series connected solar panels are generally used when you have a grid connected inverter or charge controller that requires 24 volts or more. To series wire the panels together you connect the positive terminal to the negative terminal of each panel until you are left with a single positive and negative connection.



Solar panel 580 watts negative and positive connection



[Solar Panel Positive and Negative \(Diode + Voltmeter\)](#)

Solar panel positive and negative must be determined. Learn how to check solar panel polarity as well as fix reverse polarity with our easy-to-follow guide.

[How do you know if a solar panel is positive ...](#)

To identify a solar panel's polarity, check the MC4 connectors (male/female) or use a multimeter (DC voltage mode)--positive terminals show +V (e.g., ...



[Solar Panel Wiring Basics: How to Wire Solar Panels](#)

Master solar panel wiring with this in-depth guide. Learn how to configure series and parallel connections, calculate voltage and current, and safely integrate inverters, charge controllers, ...



[Solar Panel Wiring Guide 2025: How to Wire ...](#)

May 27, 2025 · Learn how to wire solar panels in series or parallel with our expert solar panel wiring guide. Ideal for photovoltaic systems in home ...



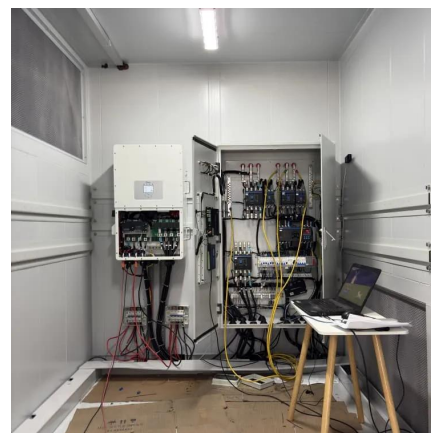
[How to connect positive and negative solar power , NenPower](#)

Mar 24, 2024 · Once solar panels are installed, the wiring process begins, focusing on positive and negative connections. Understanding how to correctly identify these terminals is of utmost ...



[How to Wire a Solar Panel Comprehensive Guide](#)

Mar 24, 2025 · How It Works: When solar panels are wired in series, the positive terminal of one panel is connected to the negative terminal of the next. This setup increases the voltage while ...



[Solar Panel Wiring Guide: How to Connect ...](#)

Oct 15, 2025 · Wiring solar panels correctly is essential to the efficiency, safety, and reliability of any PV system. Depending on the project's ...





[How to connect positive and negative solar ...](#)

Mar 24, 2024 · Once solar panels are installed, the wiring process begins, focusing on positive and negative connections. Understanding how to ...

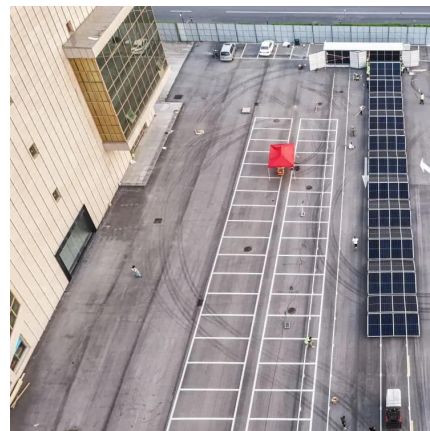


[Solar Panel Wiring Guide: How to Connect Solar Panels](#)

Oct 15, 2025 · Wiring solar panels correctly is essential to the efficiency, safety, and reliability of any PV system. Depending on the project's voltage and current requirements, you'll connect ...

[Identifying Positive and Negative Terminals ...](#)

Oct 23, 2024 · Installing a solar panel requires more than just positioning it in sunlight; understanding the positive and negative terminals is important ...



[Solar Panel Wiring Guide: How to Connect ...](#)

Mar 17, 2025 · Knowing the method to wire solar panels is important for its optimal performance and reduced issues in the future.



[Solar Panel Positive and Negative \(Diode](#)

Solar panel positive and negative must be determined. Learn how to check solar panel polarity as well as fix reverse polarity with our easy-to-follow ...



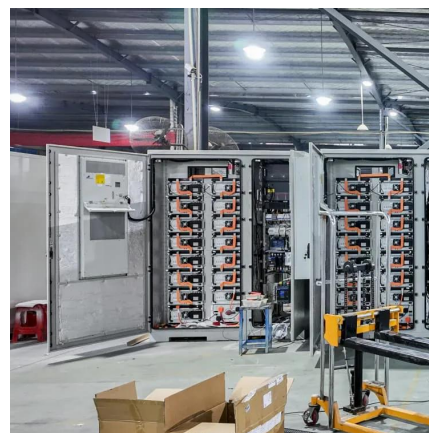
[Solar Panel Wiring Guide 2025: How to Wire Solar Panels](#)

May 27, 2025 · Learn how to wire solar panels in series or parallel with our expert solar panel wiring guide. Ideal for photovoltaic systems in home and commercial use.



[Connecting Solar Panels Together for Increased Power](#)

To series wire the panels together you connect the positive terminal to the negative terminal of each panel until you are left with a single positive and negative connection. Solar panels in ...



[Solar Panel Wiring Guide: How to Connect Panels for ...](#)

Mar 17, 2025 · Knowing the method to wire solar panels is important for its optimal performance and reduced issues in the future.



Identifying Positive and Negative Terminals on a Solar Panel

Oct 23, 2024 · Installing a solar panel requires more than just positioning it in sunlight; understanding the positive and negative terminals is important especially for an efficient ...



How do you know if a solar panel is positive or negative

To identify a solar panel's polarity, check the MC4 connectors (male/female) or use a multimeter (DC voltage mode)--positive terminals show +V (e.g., +18V for a 20W panel), negative reads ...

Solar Panel Wiring Basics: How to Wire Solar ...

Master solar panel wiring with this in-depth guide. Learn how to configure series and parallel connections, calculate voltage and current, and safely ...



Contact Us

For technical specifications, project proposals, or partnership inquiries, please visit:
<https://meble-decorator.pl>



Scan QR Code for More Information



<https://meble-decorator.pl>