

Solar panels directly pass through the inverter





Overview

How do solar inverters work?

They connect a series of solar panels (a string) to a single inverter, which converts the combined DC output into AC electricity. 2. Microinverters: These are small inverters that connect directly to each solar panel, converting DC to AC electricity at the source.

Do solar panels need an inverter?

A solar power system requires an inverter to convert DC into AC power. You do not need an inverter for DC powered devices like motors, as they can be connected directly to the solar panel. Solar panels produce DC power. You can connect any device or appliance that runs DC onto it directly. No need for an inverter or battery.

How do I connect a solar panel to an inverter?

To connect a solar panel system to a solar inverter, connect the positive wire of the panel to the positive terminal of the inverter, and the negative wire to the negative terminal.

How to connect solar panels to inverter in an off-grid system?

Battery to inverter: Connect the battery to the inverter using thick battery cables, keeping the distance short and checking the inverter manual for any required fuses or circuit breakers. Disclaimer: This article only covers the basics of how to connect solar panels to inverter in an off-grid system.



Solar panels directly pass through the inverter



[Connecting Solar Panel Directly to Inverter?](#)

Jan 9, 2024 · Key Takeaways: Connecting solar panels directly to the inverter is possible, bypassing the need for a separate charge controller. ...

[Ultimate Guide 2023: How to Connect Solar ...](#)

Nov 1, 2023 · Learning how to connect solar panel to inverter can save you substantial energy costs while making you less dependent on traditional ...

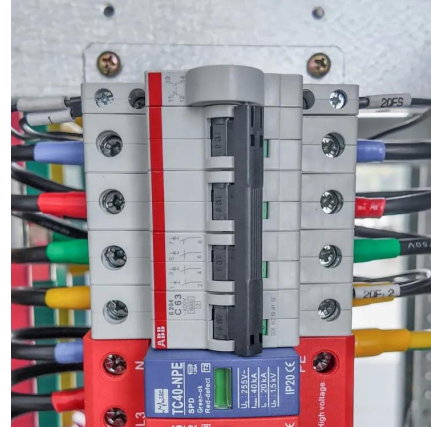


[How to Connect a Solar Panel to an Inverter](#)

Aug 7, 2025 · Connecting a solar panel to an inverter is a critical step in harnessing solar energy for practical use. Solar panels generate direct current (DC) electricity, but most household ...

[Can A Solar Panel Be Connected Directly To An Inverter?](#)

What Is The Maximum Number Of Solar Panels That Can Be Connected To An Inverter? The maximum number of solar panels connected to an inverter depends on its wattage rating, ...



[Can I Connect My Solar Panels Directly to My Inverter?](#)

Oct 23, 2025 · Considering wiring your solar panels directly to your inverter? This sounds simple, but there's a whole lot more to it than just wiring wires. If you're installing solar panels, you'll ...



[Connecting Solar Panel Directly to Inverter?](#)

Jan 9, 2024 · Key Takeaways: Connecting solar panels directly to the inverter is possible, bypassing the need for a separate charge controller. Choosing the right wiring connection, ...



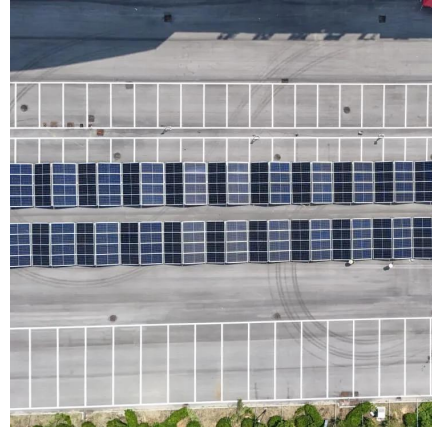
[Can I connect an inverter directly to a solar panel](#)

May 27, 2025 · There's a common question among solar energy enthusiasts: can you connect an inverter directly to a solar panel? Understanding the relationship between these components is ...



[Ultimate Guide 2023: How to Connect Solar Panel to Inverter ...](#)

Nov 1, 2023 · Learning how to connect solar panel to inverter can save you substantial energy costs while making you less dependent on traditional electricity sources. This guide will take ...

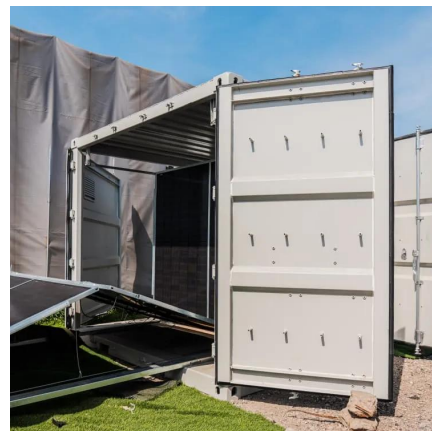


[How to connect solar panels to inverter and ...](#)

May 7, 2025 · This guide explains how to connect solar panels to an inverter safely and effectively. We'll also discuss factors like inverter capacity to ...

Mastering Solar Connections: Can You Connect a Solar Panel Directly ...

Oct 31, 2025 · Let's demystify this. Most traditional inverters are designed to convert DC (Direct Current) power from a battery bank into usable AC (Alternating Current) household power. ...



[How to connect solar panels to inverter and battery in 3 steps](#)

May 7, 2025 · This guide explains how to connect solar panels to an inverter safely and effectively. We'll also discuss factors like inverter capacity to help you determine how many ...



Can You Run an Inverter Directly from a Solar Panel?

For a regular off-grid solar panel system you need a number of different components including batteries, an inverter, and a solar charge controller. But you might be wondering if you can run ...



Can I connect an inverter directly to a solar ...

May 27, 2025 · There's a common question among solar energy enthusiasts: can you connect an inverter directly to a solar panel? Understanding the ...

Can You Run an Inverter Directly from a Solar ...

For a regular off-grid solar panel system you need a number of different components including batteries, an inverter, and a solar charge controller. ...



Can I Connect Solar Panel Directly to Inverter

Before connecting solar panels directly to an inverter, you need to match the voltage, current, and powerspecifications. Most grid-tied invertersaccept 150V to 600V DC input, while off-grid ...



Contact Us

For technical specifications, project proposals, or partnership inquiries, please visit:
<https://meble-decorator.pl>

Scan QR Code for More Information



<https://meble-decorator.pl>